

BOARD OF INTERMEDIATE EDUCATION, KARACHI

Bakhtiari Youth Center, North Nazimabad, Karachi - 74700



MODEL QUESTION PAPERS 2025

ACCORDING TO REDUCED SYLLABUS
FOR THE ANNUAL EXAMINATIONS 2025

With Compliments From:

DR. SYED SHARAF ALI SHAH
Chairman

Board of Intermediate Education,
Karachi



www.biek.edu.pk



[/BIEKarachi](https://www.facebook.com/BIEKarachi)



[/bie_karachi](https://www.instagram.com/bie_karachi)

Board of Intermediate Education, Karachi
MODEL PAPER-2025
(ACCORDING TO REDUCED SYLLABUS – 2025)

Index

S.No	Subject	Page No.
1	Urdu Normal - I (New Book)	1 - 3
2	Urdu Normal - II (New Book)	4 - 6
3	Urdu Easy - I	7 - 9
4	Urdu Easy - II	10 - 11
5	English Normal - I (New Book)	12 - 13
6	English Normal - II	14 - 15
7	Sindhi (Compulsory) <small>(New Book)</small>	16 - 20
8	Islamic Education (Compulsory) (New Book)	21 - 22
9	Pakistan Studies (Compulsory)	23 - 26
10	Mathematics - I (New Book)	27 - 29
11	Mathematics - II (New Book)	30 - 32
12	Physics - I (New Book)	33 - 34
13	Physics - II (New Book)	35 - 36
14	Chemistry - I (New Book)	37 - 39
15	Chemistry - II (New Book)	40 - 42
16	Botany - I (New Book)	43 - 44
17	Botany - II (New Book)	45 - 46
18	Zoology - I (New Book)	47 - 48
19	Zoology - II (New Book)	49 - 50
20	Computer Science - I	51 - 52
21	Computer Science - II (Opt. - I / II)	53 - 56
22	Statistics - II (Commerce)	57 - 58
23	Economics - I	59 - 60
24	Accounting - I	61 - 63
25	Accounting - II	64 - 66
26	Principle of Commerce - I	67 - 68
27	Principle of Commerce - II	69 - 70
28	Principle of Economics - I	71 - 72
29	Business Mathematics - I	73 - 74
30	Commercial Geography - II	75 - 76

بورڈ آف انٹرمیڈیٹ ایجوکیشن، کراچی

انٹرمیڈیٹ ایگزیمینٹیشن ماڈل پیپر ۲۰۲۵ء (تخفیف شدہ نصاب کے مطابق)

اردو (مادری زبان) لازمی (پرچہ اول) (نئی کتاب کے مطابق)
(تمام گروپس کے لیے)

کل نشانات: ۸۰

حصہ 'ب' (مختصر جواب کے سوالات) (نشانات: ۴۰)

ہدایات: اس حصے سے تمام سوالات کے جوابات تحریر کیجیے۔

۲۔ مندرجہ ذیل میں سے کسی دو کی تشریح شاعر کے حوالے سے کیجیے۔

وحدت میں تیری حرف دوئی کا نہ آسکے
طلب و علم ہی پاس ہے اپنے نہ ملک و مال
قید حیات و بندِ غم، اصل میں دونوں ایک ہیں
معلوم سب ہے پوچھتے ہو پھر بھی مدعا
اب اسے لوگ سمجھتے ہیں گرفتار مرا
سخت نادم ہے مجھے دام میں لانے والا

تشریح طلب اشعار کے لیے مختص غزلیات

خواجہ میر درد (غزل ۲)، خواجہ حیدر علی آتش (غزل ۱)، مرزا غالب (غزل ۲)،

حسرت موہانی، احمد فراز

۳۔ (الف) منتخب کردہ اقتباس کے مصنف اور سبق کا نام تحریر کیجیے۔

۸ (ب) مندرجہ ذیل میں سے کسی ایک اقتباس کی تشریح کیجیے۔

(i) "مجھے اس بات کے دیکھنے سے نہایت افسوس ہے کہ ہم سب آپس میں بھائی تو ہیں، مگر مثل برادران یوسف کے ہیں۔ آپس میں دوستی اور محبت، یک دلی اور یک جہتی بہت کم ہے۔ حسد، بغض و عداوت کا ہر جگہ اثر پایا جاتا ہے جس کا نتیجہ آپس کی نا اتفاقی ہے۔"

(ii) "اے زبان! تیرا منصب بہت عالی ہے اور تیری خدمت نہایت ممتاز۔ کہیں تیرا خطاب کا شرف اسرار ہے اور کہیں تیرا لقب محرم راز۔ علم ایک خزانہ غیبی اور دل اُس کا خزانہ، جو صلہ اُس کا اُنفل ہے اور تو اُس کی کنجی۔ دیکھ اس اُنفل کو بے اجازت نہ کھول اور اس خزانے کو بے موقع نہ اٹھا۔"

(iii) "شہر چپ چاپ، نہ کہیں پھاوڑا بچتا ہے، نہ سرنگ لگا کر مکان اڑایا جاتا ہے، نہ آہنی سڑک آتی ہے، نہ کہیں دمدمہ بنتا ہے۔ دلی شہر خوشاں ہے۔"

اقتباس کی تشریح کے لیے مختص اسباق

قومی اتفاق۔ زبان گویا۔ خط غالب۔ تھر کی نادیہ کماچی۔

۳۔ (الف) نظم کے شاعر کا مختصر تعارف تحریر کیجیے۔

۸ (ب) درج ذیل سے کسی ایک نظم کا مرکزی خیال تحریر کیجیے۔

☆ چپ کی داد

☆ داستان تیاری میں باغ کی

☆ رہے نام اللہ کا

یا

(الف) تشریح کردہ جز کے شاعر اور نظم کا نام تحریر کیجیے۔

(ب) مندرجہ ذیل جز کی تشریح کیجیے۔

فکر و دانش کی ہے معراج خدا کا اقرار
بہی وجدان کی آواز ہے فطرت کی پکار
اُس خلاق نے جوہر کو تو انائی دی
پھول پیوں کا عطا جس نے کیے نقش و نگار
اُس کی صنعت کے نمونے ہیں وہ کہت ہو کہ رنگ
اس کی قدرت کے کرشمے ہیں خزاں ہو کہ بہار

مرکزی خیال کے لیے مختص نظمیں

رہے نام اللہ کا۔ داستان تیاری میں باغ کی۔ چپ کی داد۔ چاند میری زمیں۔ سائینڈا فیکٹس

بندگی تشریح کے لیے مختص نظمیں

حمد۔ نعت۔ رباعی: میر انیس۔ قطعہ: تن بہ تقدیر۔ مشورہ۔
رہے نام اللہ کا۔ داستان تیاری میں باغ کی۔ چپ کی داد۔ چاند میری زمیں۔ سائینڈا فیکٹس

(ورق الپٹے)

- ۲ (الف) منتخب کردہ سبق کے مصنف کا مختصر تعارف تحریر کیجیے۔
۸ (ب) مندرجہ ذیل میں سے کسی ایک سبق کا خلاصہ تحریر کیجیے۔
☆ فائقے میں روزہ ☆ زیور کا ڈبٹا ☆ خواہ مخواہ کی لڑائی

خلاصے کے لیے مختص اسباق			
زیور کا ڈبٹا۔	فائقے میں روزہ۔	بیگم کی بلی۔	خواہ مخواہ کی لڑائی۔

یا

مندرجہ ذیل میں سے صرف پانچ سوالات کے جواب دیجیے۔ تمام سوالات کے نشانات مساوی ہیں۔

- (i) مسلمانوں کے زوال کا سب سے بڑا سبب کیا ہے؟
(ii) حالی نے زبان کی طاقت کو نمونہ قدرت الہی کیوں کہا ہے؟
(iii) مصاحب نے مرزا صاحب کو کیا مشورہ دیا؟
(iv) چند پرکاش نے عملی زندگی کا آغاز کس طرح کیا؟
(v) امیدوار نے بیگم کی بلی کو ٹھکانے لگانے کے لیے کتنی رقم طلب کی؟
(vi) کارونچر پہاڑی سلسلہ کس جگہ واقع ہے؟
(vii) خواہ مخواہ کی لڑائی سے مصنف کی کیا مراد ہے؟
(viii) خط نویسی کے سلسلے میں محمد شاہی روش سے غالب کی کیا مراد ہے؟

سوالات کے لیے مختص اسباق				
قومی اتفاق	زبان گویا	فائقے میں روزہ	زیور کا ڈبٹا	بیگم کی بلی
تھر کی نادی کمانچی	خواہ مخواہ کی لڑائی	خط غالب بنام میر مہدی مجروح		

حصہ 'ج' (تفصیلی جواب کے سوالات) (نشانات : ۴۰)

- ۶- مندرجہ ذیل میں سے کسی ایک شاعر کے کلام کی دس خصوصیات تحریر کیجیے۔

☆ خواجہ میر درد ☆ مرزا غالب ☆ نظیر اکبر آبادی

تبرے کے لیے مختص شاعر	
خواجہ میر درد۔	مرزا غالب۔
خواجہ حیدر علی آتش۔	نظیر اکبر آبادی۔
حسرت موہانی۔	احمد فراز۔

- ۷- مندرجہ ذیل میں سے کسی ایک نثر نگار کی طرز تحریر کی دس خصوصیات تحریر کیجیے۔

☆ سر سید احمد خان ☆ منشی پریم چند ☆ شوکت تھانوی

تبرے کے لیے مختص نثر نگار	
سر سید احمد خان۔	خواجہ حسن نظامی۔
منشی پریم چند۔	امتیاز علی تاج۔
شوکت تھانوی۔	

یا

مندرجہ ذیل میں سے کسی ایک موضوع پر مضمون تحریر کیجیے۔

☆ سوشل میڈیا فائدہ اور نقصانات ☆ شجر کاری وقت کی اہم ضرورت

بورڈ آف انٹرمیڈیٹ ایجوکیشن، کراچی

انٹرمیڈیٹ ایگزامینیشن ماڈل پیپر ۲۰۲۵ء (تخفیف شدہ نصاب کے مطابق)

کل نشانات: ۲۰

اردو (مادری زبان) لازمی (پرچہ اول) (نئی کتاب کے مطابق)

(تمام گروپس کے لیے)

(نشانات: ۲۰)

حصہ 'الف' (کثیر الانتخابی سوالات)

نوٹ: (i) اس حصہ میں بیس جزوی سوالات ہیں۔ تمام جزوی سوالات کے جوابات مطلوب ہیں اور ہر جزو کا ایک نمبر ہے۔

(ii) سوال یا اس کا جزو انتخابی کا پی میں نقل نہ کیجیے۔ سوال کے اصل نمبر اور جزو کے سامنے مکمل جواب تحریر کیجیے۔

۱۔ مندرجہ ذیل میں سے ہر ایک کے لیے درست جواب منتخب کیجیے:-

- (i) سرسید احمد خان نے اس تحریک کا آغاز کیا:
- ☆ ترقی پسند تحریک ☆ علی گڑھ تحریک ☆ رومانوی تحریک ☆ ارباب ذوق تحریک
- (ii) "ارض و سما کہاں تیری وسعت کو پاسکے میرا ہی دل ہے وہ کہ جہاں تو سما سکے" اس شعر کے خالق ہیں:
- ☆ حسرت موہانی ☆ اقبال ☆ خواجہ میر درد ☆ نظیر اکبر آبادی
- (iii) ڈرامہ بیگم کی بی بی ان کا تحریر کردہ ہے:
- ☆ الطاف حسین حالی ☆ سرسید احمد خان ☆ شوکت تھانوی ☆ امتیاز علی تاج
- (iv) آزاد نظم "مشورہ" ان کی تخلیق ہے:
- ☆ پروین شاکر ☆ منیر نیازی ☆ احمد فراز ☆ فاطمہ حسن
- (v) "بیگمات کے آنسو" ان کی تصنیف ہے:
- ☆ خواجہ حسن نظامی ☆ سعادت حسن منٹو ☆ پریم چند ☆ احمد ندیم قاسمی
- (vi) "مثنوی سحر البیان" کے شاعر ہیں:
- ☆ الطاف حسین حالی ☆ میر انیس ☆ دیانکر نسیم ☆ میر حسن
- (vii) چند پرکاش گزراوقات کے لیے اتنے روپے ماہ وار کی ٹیوشن پڑھاتا تھا:
- ☆ بیس روپے ☆ تیس روپے ☆ چالیس روپے ☆ پچاس روپے
- (viii) شعر مکمل کریں: دوست بن کر بھی نہیں ساتھ نبھانے والا
- ☆ سخت نام ہے مجھے دام میں لانے والا ☆ وہ جو اک شخص ہے منہ پھیر کے جانے والا
- ☆ وہی انداز ہے ظالم کا زمانے والا ☆ دوست ہوتا نہیں ہر ہاتھ ملانے والا
- (ix) تنگ پار کر میں یہ چٹانی سلسلہ واقع ہے:
- ☆ کاروچھر ☆ اروڑ ☆ کوٹ ڈیجی ☆ موہنجودڑو
- (x) خواجہ حیدر علی آتش اس دیستان کے نمائندہ شاعر ہیں:
- ☆ دیستان دکن ☆ دیستان لکھنؤ ☆ دیستان دہلی ☆ دیستان لاہور
- (xi) ایک صاحب نے شوکت تھانوی سے کہا ڈھائی آنے لڑکی اس کپڑے کی پتلون کیا پہن لیا اوقات بھول گئے:
- ☆ کاشن کی ☆ ریشم کی ☆ مارلین کی ☆ کھدر کی
- (xii) "تن بد تقدیر" کے عنوان سے قطعہ انھوں نے لکھا ہے:
- ☆ شیخ ایاز ☆ علامہ اقبال ☆ انور مسعود ☆ انور شعور
- (xiii) اردو کے پہلے تنقید نگار ہیں:
- ☆ مولانا الطاف حسین حالی ☆ خواجہ حسن نظامی ☆ سرسید احمد خان ☆ فتنی پریم چند
- (xiv) غالب نے مراسلے سے بنا دیا:
- ☆ کالم ☆ مضمون ☆ مکالمہ ☆ انشائیہ
- (xv) اردو کا پہلا عوامی و جمہوری شاعر ان کو کہا جاتا ہے:
- ☆ علامہ اقبال ☆ میر درد ☆ نظیر اکبر آبادی ☆ الطاف حسین حالی
- (xvi) سبق تھر کی نادیہ کماچی کا تعلق اس ادبی صنف سے ہے:
- ☆ خطوط نگاری ☆ ڈرامہ نگاری ☆ سفر نامہ نگاری ☆ افسانہ نگاری
- (xvii) شامل نصاب "حمہ" کے شاعر ہیں:
- ☆ اقبال عظیم ☆ علامہ اقبال ☆ ماہر القادری ☆ نظیر اکبر آبادی
- (xviii) اس شاعر کے دیوان کو ہندوستان کی الہامی کتاب قرار دیا گیا ہے:
- ☆ میر درد ☆ میر تقی میر ☆ مرزا غالب ☆ میر سوز
- (xix) جس نظم کا ہر بند چھ مصرعوں پر مشتمل ہو، اسے کہتے ہیں:
- ☆ رباعی ☆ قطعہ ☆ مخمس ☆ مسدس
- (xx) شامل نصاب پیام لطیف کا اردو میں ترجمہ انھوں نے کیا ہے:
- ☆ مولوی ہدایت اللہ ☆ شیخ ایاز ☆ آفاق صدیقی ☆ ناہید اختر سومرو

-----XXXXXX-----

بورڈ آف انٹرمیڈیٹ ایجوکیشن، کراچی

انٹرمیڈیٹ ایگزیمینٹس ماڈل پیپر ۲۰۲۵ء (تخفیف شدہ نصاب کے مطابق)

اردو (مادری زبان) لازمی (پرچہ دوم) (نئی کتاب کے مطابق)
(تمام گروپس کے لیے)

کل نشانات: ۸۰

حصہ 'ب' (مختصر جواب کے سوالات)

(نشانات: ۴۰)

ہدایات: اس حصے سے تمام سوالات کے جوابات تحریر کیجیے۔

۲۔ درج ذیل میں سے کسی دو اشعار کی تشریح شاعر کے حوالے اور مختصر تعارف کے ساتھ کیجیے۔

تجاہل ، تغافل ، تساہل کیا
ہوا کام مشکل توکل کیا
بے نیازی حد سے گزری بندہ پرور کب تک
ہم کہیں گے حال دل اور آپ فرمائیں گے کیا؟
تم مرے پاس ہوتے ہو گویا
جب کوئی دوسرا نہیں ہوتا
کیا جانے کیا ہو گیا ارباب جنوں کو
مرنے کی ادا یاد نہ جینے کی ادا یاد
مجھ کو عادت ہے روٹھ جانے کی
آپ مجھ کو منالیا کیجیے

تشریح طلب اشعار کے لیے مختص غزلیات

میر تقی میر (غزل ۲)، مرزا غالب (غزل ۱)، مومن خان مومن، جگر مراد آبادی، جون ایلیا

۳۔ (الف) منتخب کردہ اقتباس کے سبق کا نام اور مصنف کا نام تحریر کیجیے۔

(ب) مندرجہ ذیل میں سے کسی ایک اقتباس کی تشریح کیجیے۔

(i) "ایک حاکم کے لیے محکوم کی زندگی، ایک محکوم کے لیے حاکم کی زندگی، ایک دولت مند کے لیے غریب کی زندگی اور ایک غریب کے لیے دولت مند کی زندگی کامل مثال اور نمونہ نہیں بن سکتی۔ اس لیے ضروری ہے کہ عالم گیر اور دائمی پیغمبر ﷺ کی زندگی ان تمام مختلف مناظر کے رنگ برنگ پھولوں کا گل دستہ ہو۔"

(ii) ظرافت اصلی اور ظرافت نقلی میں اتنا ہی فرق ہے، جتنا آدمی اور بندر میں۔ سب سے پہلے تو یہ ہے کہ اسے بندر کی طرح جھوٹ موٹ کی دغا بازیوں اور ویسے ہی نقلیں کرنے کی عادت ہے۔ دوسرے، اس قسم کے کام کر کے نہایت خوش ہوتا ہے بلکہ دونوں باتیں اسے یکساں ہیں۔

(iii) ہر اچھے آدمی کے گرد ایک ہالہ ہوتا ہے، اُس کے نزدیک جائیں تو دل خود بخود نمودار ہو جاتا ہے۔ آج میں روشنی کے اس حلقے میں پہلی بار داخل ہوا، اپنے اندھیرے چھٹے ہوئے محسوس ہوئے۔ یہ خوشی کے ساتھ تعجب کی بات بھی تھی۔

اقتباس کی تشریح کے لیے مختص اسباق

سیرت محمدی ﷺ کی جامعیت - خوش طبعی - قحط الرجال - سراقبال مرحوم۔

۴۔ (الف) نظم کے شاعر کا مختصر تعارف تحریر کیجیے۔

(ب) مندرجہ ذیل میں سے کسی ایک نظم کا مرکزی خیال تحریر کیجیے۔

☆ حضرت فاطمہ الزہراءؑ کی رخصتی ☆ چاند اور تارے ☆ دو بہرے شناساؤں کی ملاقات

یا

(الف) تشریح کردہ جز کے شاعر اور نظم کا نام تحریر کیجیے۔

(ب) مندرجہ ذیل جز کی تشریح کیجیے۔

سب سے اعلیٰ تری سرکار ہے سب سے افضل
میرے ایمان مفصل کا یہی ہے مجمل
ہے تمنانہ رہے نعت سے تیری خالی
نہ مرا شعر، نہ قطعہ، نہ قصیدہ، نہ غزل
رُخ انور ﷺ کا ترے دھیان رہے بعد قضا
میرے ہمراہ چلے راہ عدم میں مشعل

مرکزی خیال کے لیے مختص نظمیں

حضرت فاطمہ الزہراءؑ کی رخصتی، چاند اور تارے، کتبہ کون لکھے گا، دو بہرے شناساؤں کی ملاقات

بندگی تشریح کے لیے مختص نظمیں

حمد، نعت، گیت، اسلوب، کام
حضرت فاطمہ الزہراءؑ کی رخصتی، چاند اور تارے، کتبہ کون لکھے گا، دو بہرے شناساؤں کی ملاقات

(ورق الیٹہ)

اردو (مادری زبان) لازمی (پرچہ دوم)
(تمام گروپس کے لیے)

-:۲:-

- ۵- (الف) منتخب کردہ سبق کے مصنف کا مختصر تعارف تحریر کیجیے۔
۲
۸ (ب) مندرجہ ذیل میں سے کسی ایک سبق کا خلاصہ تحریر کیجیے۔
☆ زمین ☆ میرالہم ☆ چارمال دار

خلاصے کے لیے مختص اسباق
ادب آموزوں کے نام۔ میرالہم۔ زمین چارمال دار۔ سویرے جوکل آنکھ میری کھلی۔

یا
مندرجہ ذیل میں سے صرف پانچ سوالات کے جواب دیجیے۔ تمام سوالات کے نشانات مساوی ہیں۔

(i) عدی بن حاتم نے کیسے اسلام قبول کیا؟ واقعہ بیان کیجیے۔

(ii) خوش طبعی کے خاندان کا بانی کون ہے؟

(iii) ولندیزی بچے کی کہانی سے کیا سبق ملتا ہے؟

(iv) بے ادبوں سے ادب کیسے سیکھا جاسکتا ہے؟

(v) انشائیہ نگار نے الہم کو "یوسف گم گشتہ" کیوں کہا؟

(vi) ساجدہ کو دیکھ کر ڈاکٹر نے کیا کہا؟

(vii) جو لوگ دوستوں کی بات نہیں مانتے، اُن کا انجام کیا ہوتا ہے؟

(viii) ڈاکٹر اقبال کے انتقال کی خبر سن کر مصنف کا رد عمل کیا تھا؟

سوالات کے لیے مختص اسباق

سیرت محمدی ﷺ کی جامعیت۔ خوش طبعی۔ قحط الرجال۔ ادب آموزوں کے نام۔ میرالہم۔ زمین۔
چارمال دار۔ سراقبال مرحوم۔ سویرے جوکل آنکھ میری کھلی

حصہ 'ج' (تفصیلی جواب کے سوالات) (نشانات : ۲۰)

- ۶- مندرجہ ذیل میں سے کسی ایک شاعر کے کلام کی دس خصوصیات تحریر کیجیے۔
۲۰ ☆ میر تقی میر ☆ مرزا غالب ☆ مومن خان مومن

تبصرے کے لیے مختص شاعر

میر تقی میر۔ مرزا غالب۔ مومن خان مومن۔ جگر مراد آبادی۔ علامہ اقبال۔ جون ایلیا

- ۷- مندرجہ ذیل میں سے کسی ایک نثر نگار کی طرز تحریر کی دس خصوصیات تحریر کیجیے:-
۲۰ ☆ سید سلیمان ندوی ☆ محمد حسین آزاد ☆ پطرس بخاری

تبصرے کے لیے مختص نثر نگار

سید سلیمان ندوی۔ محمد حسین آزاد۔ خدیجہ مستور۔ رشید احمد صدیقی۔ پطرس بخاری

یا

مندرجہ ذیل میں سے کسی ایک موضوع پر مضمون تحریر کیجیے:-

☆ مصنوعی ذہانت فوائد اور نقصانات ☆ موسمیاتی تبدیلیاں اور ہماری ذمے داریاں

بورڈ آف انٹرمیڈیٹ ایجوکیشن، کراچی

انٹرمیڈیٹ ایگزامینیشن ماڈل پیپر ۲۰۲۵ء (تخفیف شدہ نصاب کے مطابق)

اردو (مادری زبان) لازمی (پرچہ دوم) (نئی کتاب کے مطابق)
(تمام گروپس کے لیے)

کل نشانات: ۲۰

حصہ 'الف' (کثیر الانتخابی سوالات) (نشانات: ۲۰)

نوٹ: (i) اس حصہ میں ۲۰ جزوی سوالات ہیں۔ تمام جزوی سوالات کے جوابات مطلوب ہیں۔ ہر جزو کا ایک نمبر ہے۔

(ii) اپنی جوابی کاپی میں جزوی سوال کو نقل نہ کیجیے۔ سوال اور اس کے جزو کا درست نمبر پرچہ کے مطابق لکھ کر صرف مکمل جواب تحریر کیجیے۔

۱۔ مندرجہ ذیل میں سے ہر ایک کے لیے درست جواب منتخب کیجیے:-

- (i) سبق "سیرت محمدی کی جامعیت" اس کتاب سے ماخوذ ہے:
☆ انسان کامل ☆ ہادی عالم ☆ خطبات مدراس ☆ محسن انسانیت
- (ii) ابوالاثر اس شاعر کا لقب ہے:
☆ نگار صہبائی ☆ حمایت علی شاعر ☆ علامہ اقبال ☆ حفیظ جالندھری
- (iii) سویرے جوکل آکھ میری کھلی "اس قسم کا مضمون ہے:
☆ مزاحیہ ☆ تاریخی ☆ طبی ☆ تنقیدی
- (iv) نعت میں لفظ "نفاش ازل" سے مراد ہے:
☆ روز ازل ☆ وعدہ ازل ☆ روز ازل کا نقش ☆ خالق کائنات
- (v) گیڈر کی موت آتی ہے تو دوڑتا ہے:
☆ گاؤں کی طرف ☆ شہر کی طرف ☆ جنگل کی طرف ☆ دریا کی طرف
- (vi) نظم چاند اور تارے کی ہیئت ہے:
☆ مسدس ☆ مخمس ☆ مربع ☆ مثنوی
- (vii) رشید احمد صدیقی کو ملی گڑھ اسٹیشن پر اس شخصیت کے انتقال کی خبر ملی:
☆ سر سید احمد خان ☆ سید سلیمان ندوی ☆ علامہ شبلی نعمانی ☆ علامہ اقبال
- (viii) حضرت فاطمہ الزہراء کا اصل سامان جہیز یہ تھا:
☆ سامان ضرورت ☆ فقر و فاقہ ☆ سامان آرائش ☆ صبر و استقامت
- (ix) جُستہ روتے ہوئے گئی تھی:
☆ کیوڑ کے پاس ☆ کوئل کے پاس ☆ توتے کے پاس ☆ مینا کے پاس
- (x) "پُرسادینا" سے مراد ہے:
☆ تعزیت کرنا ☆ تہنیت کرنا ☆ عیادت کرنا ☆ مسرت کرنا
- (xi) سبق "زمین" میں منظر پیش کیا گیا ہے:
☆ مہا جریکپ کا ☆ ریلوے اسٹیشن کا ☆ بازار کا ☆ گاؤں کا
- (xii) نظم "دو بہرے شناساؤں کی ملاقات" کی ہیئت ہے:
☆ غزل ☆ نظم ☆ رباعی ☆ قصیدہ
- (xiii) مصنف کو پرانے کا غدا کی صفائی اور ترتیب دیتے ہوئے ملا ایک پرانا:
☆ قلم ☆ فوٹو ☆ البم ☆ رجسٹر
- (xiv) کتاب میں شامل گیت کے شاعر ہیں:
☆ نگار صہبائی ☆ حمایت علی شاعر ☆ وضاحت نسیم ☆ رسا چغتائی
- (xv) "میں نے ادب بے ادبوں سے سیکھا ہے۔" یہ بات کہی ہے:
☆ سقراط نے ☆ ارسطو نے ☆ ابولعی سینا نے ☆ لقمان نے
- (xvi) کتاب میں شامل ٹھلائی کا عنوان ہے:
☆ کام ☆ اسلوب ☆ آب زمزم ☆ کتبہ
- (xvii) چینی عالم نے آٹوگراف اس زبان میں دیا تھا:
☆ عربی ☆ انگریزی ☆ فارسی ☆ چینی
- (xviii) میر کے مطابق مونس ہجر اس تھا:
☆ توکل ☆ صبر ☆ شکر ☆ احسان
- (xix) اردو کے بے مثال تمثیل نگار ہیں:
☆ سید سلیمان ندوی ☆ محمد حسین آزاد ☆ رشید احمد صدیقی ☆ مختار مسعود
- (xx) ہانکیو اس زبان کی مشہور مصنف تھیں ہے:
☆ جاپانی ☆ چینی ☆ فارسی ☆ عربی

بورڈ آف انٹرمیڈیٹ ایجوکیشن، کراچی

انٹرمیڈیٹ ایگزامینیشن ماڈل پیپر ۲۰۲۵ء (تخفیف شدہ نصاب کے مطابق)

(اردو (آسان) (پرچہ اول))

(تمام گروپس کے لیے)

وقت : ۲ گھنٹے ۴۰ منٹ

کل نشانات : ۸۰

نوٹ :- تمام سوالات کے جوابات مطلوب ہیں۔

(نشانات : ۴۰)

حصہ 'ب' (مختصر جواب کے سوالات)

- ۲ (الف) مندرجہ ذیل اقتباسات میں سے کسی ایک اقتباس کی تشریح کیجیے۔
- ۲ (ب) تشریح کردہ اقتباس کے مصنف کا نام تحریر کیجیے۔
- ۲ (ج) تشریح کردہ اقتباس کے سبق کا نام تحریر کیجیے۔
- (i) گھڑی ہر وقت میری جیب میں رہی، مجھے اپنی غم ناک آواز سے ہر منٹ اور ہر سیکنڈ وقت کی پرواز سے خبر دیتی رہی مگر میں نہ سمجھا کہ یہ دراصل میری گزرتی ہوئی عمر کے پاؤں کی آہٹ ہے۔ ہزاروں دفعہ جیب سے نکال کر دیکھا، کبھی چھبے، کبھی دس بچے، کبھی بارہ بچے مگر حریف میں نہ سمجھا کہ یہ اپنی ہی عمر کے قدم کے نشان ہیں۔
- (ii) آخر نیند تو ظالم ہے، کسی کی ذرا آنکھ چمکی اور جتنے بیٹھے تھے جھٹ اُس پر ٹوٹ پڑتے ہیں۔ فوراً اچھاڑ چیر نکالوئی کر کے کھایا جاتے ہیں۔ اس لیے اہل ملک نے اصطلاح نکالی ہے "گرگ آشتی"، یعنی اس بد ذات جانور کے ملاپ کا بھی اعتبار نہیں۔
- (iii) مکے والوں کو آنحضرت ﷺ کے مذہب سے گومخالفت تھی، مگر پھر بھی سب کو آپ ﷺ کی دیانت اور امانت پر بڑا بھروسہ تھا۔ چنانچہ بہت سے لوگوں کی امانتیں آپ ﷺ کے پاس تھیں۔ آپ ﷺ نے یہ امانتیں حضرت علی المرتضیٰ کے سپرد کیں اور فرمایا کہ آج تم میرے بستر پر آرام کرنا اور صبح لوگوں کو ان کی یہ امانتیں دے کر تم بھی چلے آنا۔

اقتباسات کی تشریح کے لیے تخفیف شدہ نصاب کے مطابق مختص اسباق

۱۔ نبی کریم ﷺ کی ہجرت ۲۔ ایران کا جاڑا ۳۔ نصوص کا خواب

۴۔ طالب علموں کے نام سرسید کا ایک خط

- ۲ (الف) مندرجہ ذیل میں سے کسی ایک نظمیہ جو کی تشریح کیجیے۔
- ۲ (ب) تشریح کردہ جو کی نظم کا نام تحریر کیجیے۔
- ۲ (ج) تشریح کردہ جو کے شاعر کا نام تحریر کیجیے۔

(i) بیٹھے بے فکر کیا ہو ہم وطنو!
مرد ہو تو کسی کے کام آؤ
اٹھو، اہل وطن کے دوست بنو
کھانا کھاؤ توجی میں تم شرماء
ورنہ کھاؤ پیو چلے جاؤ
ٹھنڈا پانی پیو تو اشک بھاؤ

(ii) یہ لعل و گہر ہیں جو بکھرے پڑے
نظر میں جو اتنے سے آتے ہیں یہ
زمیں سے بھی ان میں ہیں اکثر بڑے
پڑے اپنے چکر میں ہیں گھومتے
بہت دور پیکر لگاتے ہیں یہ
ترے حکم کے ذوق میں جھومتے

(iii) تلوار تیز پہلو میں ہے اک لٹک رہی
ظاہر ہے چال ڈھال سے اور رنگ ڈھنگ سے
برجھی سی ہے چشمِ عدو میں کھٹک رہی
شاید کوئی معرکہ سر کر کے آیا ہے
وہ آرہا ہے بس ابھی میدان جنگ سے
صف دشمنوں کی زیروزبر کر کے آیا ہے

نظم کے بند کی تشریح کے لیے تخفیف شدہ نصاب کے مطابق مختص نظمیں

۱۔ حمد باری تعالیٰ ۲۔ آدمی نامہ ۳۔ آسمان اور تارے ۴۔ حُب وطن

۵۔ رباعیات ۶۔ مردِ مجاہد

- ۱۰ (الف) مندرجہ ذیل محاورات میں سے کسی پانچ کے جملے بنائیے۔
- آکھوں میں آنکھیں ڈالنا۔ سبز باغ دکھانا۔ دل جلانا۔ دلاسا دینا۔ شکم سیر ہونا۔ ٹوٹ پڑنا۔ ترس کھانا۔ جاں بحق ہونا۔ رختہ ڈالنا۔ دل اچھا ہونا۔
- ۵ (ب) مندرجہ ذیل میں سے کسی پانچ الفاظ کے واحد یا جمع بنائیے۔
- چہرے۔ کلیاں۔ عقائد۔ شعر۔ قواعد۔ تعلیم۔ احساسات۔ تعلق۔ ضوابط۔ فرد۔
- ۵ (ج) مندرجہ ذیل میں سے کسی پانچ الفاظ کے متضاد لکھیے۔
- دور۔ وسیع۔ بیگانہ۔ کمزور۔ حقیقت۔ کثرت۔ آخر۔ ابد۔ حمایت۔ فراز۔

(ورق الیٹے)

حصہ (الف) میں دس محاورات دیے جائیں گے جس میں سے کسی پانچ محاورات کو جملوں میں استعمال کرنا ہوگا۔
حصہ (ب) میں دس الفاظ دیے جائیں گے جس میں سے کسی پانچ الفاظ کے متضاد لکھنے ہوں گے۔
حصہ (ج) میں دس الفاظ میں سے کسی پانچ کے واحد جمع بنائے جائیں گے۔

حصہ 'ج' (تفصیلی جواب کے سوالات) (نشانات : ۴۰)

۶ (الف) مندرجہ ذیل میں سے کسی ایک نظم کا خلاصہ تحریر کیجیے:-

۲ (ب) منتخب کردہ نظم کے شاعر کا نام تحریر کیجیے:-

۲ (ج) منتخب کردہ نظم کے شاعر کا مختصر تعارف تحریر کیجیے:-

(i) حمد (ii) آدمی نامہ (iii) حُب وطن (iv) آسمان اور تارے

نظم کے خلاصے کے لیے تخفیف شدہ نصاب کے مطابق مختص نظمیں

۱۔ حمد ۲۔ آدمی نامہ ۳۔ حُب وطن ۴۔ آسمان اور تارے ۵۔ مرد مجاہد

۶ (الف) مندرجہ ذیل میں سے کسی ایک سبق کا خلاصہ تحریر کیجیے:-

۲ (ب) مندرجہ ذیل میں سے کسی ایک سبق کا خلاصہ تحریر کیجیے:-

۲ (ج) منتخب کردہ سبق کے مصنف کا مختصر تعارف تحریر کیجیے:-

(i) ایران کا جاڑا (ii) حج اکبر (iii) نصح کا خواب (iv) جیسی کرنی ویسی بھرنی

اسباق کے خلاصے کے لیے تخفیف شدہ نصاب کے مطابق مختص اسباق
۱۔ جیسی کرنی ویسی بھرنی ۲۔ ایران کا جاڑا ۳۔ حج اکبر
۴۔ اسلامی حکومت کا امیر سب کا خادم ہوتا ہے۔

۱۰ (الف) مندرجہ ذیل میں سے کسی ایک عنوان پر مضمون تحریر کیجیے:-

(i) تعلیم نسواں (ii) علم بڑی دولت ہے (iii) موسمیاتی تبدیلیاں (iv) اگر میں کالج کا پرنسپل ہوتا/ ہوتی

اس سوال میں کل چار عنوانات دیے جائیں گے جس میں سے کسی ایک عنوان پر
دوسو سے تین سو الفاظ پر مشتمل مضمون لکھنا ہوگا۔

۱۰ (الف) اپنے والد صاحب کو خط لکھیے جس میں اپنی تعلیمی صورت حال سے آگاہ کیا گیا ہو۔

یا

کسی اخبار کے مدیر کے نام خط میں شہر میں بڑھتے ہوئے ٹریفک حادثات کی جانب توجہ مبذول کروائیے۔

اس سوال میں ایک رسمی اور ایک غیر رسمی خط دیا جائے گا جس میں سے کسی ایک کو تحریر کرنا ہوگا۔

-----XXXXXXX-----

بورڈ آف انٹرمیڈیٹ ایجوکیشن، کراچی

انٹرمیڈیٹ ایگزامینیشن ماڈل پیپر ۲۰۲۵ء (تخفیف شدہ نصاب کے مطابق)

اردو (آسان) (پرچہ اول)

(تمام گروپس کے لیے)

کل نشانات : ۲۰

وقت : ۲۰ منٹ

حصہ الف (کثیر الانتخابی سوالات) (نشانات: ۲۰)

نوٹ: (i) اس حصہ میں ۲۰ جزوی سوالات ہیں۔ تمام جزوی سوالات کے جوابات مطلوب ہیں اور ہر جزو کا ایک نمبر ہے۔
(ii) سوال یا اس کا جزو انتخابی کا پٹی میں نقل مت کیجیے۔ سوال کے اصل نمبر اور جزو کے سامنے صرف مکمل جواب تحریر کیجیے۔

۱۔ مندرجہ ذیل میں سے ہر ایک کے لیے درست جواب منتخب کیجیے:-

(i) طالب علموں کے نام خط انہوں نے لکھا ہے:

☆ سر سید احمد خان ☆ علامہ اقبال ☆ مرزا غالب ☆ ڈپٹی نذیر احمد

(ii) ”سراقہ بن جعشم“ تھا:

☆ لوہار ☆ سنار ☆ سپاہی ☆ مزدور

(iii) جس جملے میں ”تو“ آئے اُس جملے کو قواعد کی رو سے کہا جاتا ہے:

☆ فعل متعدی ☆ شرط ☆ جزا ☆ فعل ناقص

(iv) ”بیگمات کے آنسو“ اور ”مرد دہلی کے افسانے“ ان کی تصنیفات ہیں:

☆ مولانا حالی ☆ خواجہ حسن نظامی ☆ سر سید ☆ مولانا محمد حسین آزاد

(v) ”بیشرب“ اس شہر کا پرانا نام ہے:

☆ مکہ ☆ مدینہ ☆ ریاض ☆ جدہ

(vi) افسانہ حج اکبر کے خالق ہیں:

☆ احمد ندیم قاسمی ☆ مثنیٰ پریم چند ☆ مولانا محمد حسین آزاد ☆ سر سید احمد خان

(vii) حمد میں تعریف کی جاتی ہے:

☆ نبی کریم ﷺ کی ☆ اللہ تعالیٰ کی ☆ بادشاہ کی ☆ ولی اللہ کی

(viii) سیرت نگار کی حیثیت سے مشہور ہیں:

☆ مرزا فرحت اللہ بیگ ☆ مولانا حالی ☆ ڈپٹی نذیر احمد ☆ سید سلیمان ندوی

(ix) ”آنکھوں میں آنکھیں ڈالنا“ قواعد کی رو سے ہے:

☆ روزمرہ ☆ استعارہ ☆ محاورہ ☆ قول

(x) انھیں مصور فطرت کہا جاتا ہے:

☆ عبدالحلیم شرر ☆ ڈپٹی نذیر احمد ☆ خواجہ حسن نظامی ☆ سر سید احمد خان

(xi) نظم آسمان اور تارے میں ”دلعل وغہر“ کہا گیا ہے:

☆ زمین کو ☆ آسمان کو ☆ ستاروں کو ☆ سورج کو

(xii) ”رحمت عالم ﷺ“ سے یہ سبق نصاب میں شامل ہے:

☆ سب سے بڑا اسلامی شاعر ☆ نبی کریم ﷺ کی ہجرت ☆ اسلامی کردار ☆ نصوص کا خواب

(xiii) اس مصنف کی صحافتی زندگی کا آغاز روزنامہ ”رعیت“ سے ہوا:

☆ خواجہ حسن نظامی ☆ خدیجہ مستور ☆ سر سید احمد خان ☆ ڈپٹی نذیر احمد

(xiv) ”مدینہ“ عربی میں کہتے ہیں:

☆ شہر کو ☆ جنگل کو ☆ گاؤں کو ☆ عمارت کو

(xv) پطرس بخاری کا اصل نام ہے:

☆ سید احمد شاہ ☆ سید ذوالفقار شاہ ☆ سید حیدر شاہ ☆ سید علی شاہ

(xvi) یہ بچوں کے شاعر کہلاتے ہیں:

☆ مولانا ظفر علی خان ☆ مولانا حالی ☆ مولانا اسماعیل میرٹھی ☆ مولانا محمد حسین آزاد

(xvii) اردو کے پہلے قومی شاعر ہیں:

☆ سر سید احمد خان ☆ مولانا حالی ☆ مرزا غالب ☆ مولانا محمد حسین آزاد

(xviii) نظیر اکبر آبادی کی یہ نظم نصاب میں شامل ہے:

☆ حب وطن ☆ آسمان اور تارے ☆ آدمی نامہ ☆ حمد

(xix) اردو کے سب سے بڑے ٹیلی نگار ہیں:

☆ علامہ شبلی نعمانی ☆ سر سید احمد خان ☆ خواجہ حسن نظامی ☆ مولانا محمد حسین آزاد

(xx) اردو اس زبان کا لفظ ہے:

☆ عربی ☆ ترکی ☆ فارسی ☆ ہندی

-----XXXXXX-----

بورڈ آف انٹرمیڈیٹ ایجوکیشن، کراچی

انٹرمیڈیٹ ایگزامینیشن ماڈل پیپر ۲۰۲۵ء (تخفیف شدہ نصاب کے مطابق)

اردو (آسان) (پرچہ دوم)

(تمام گروپس کے لیے)

کل نشانات : ۸۰

وقت : ۲ گھنٹے ۴۰ منٹ

(نشانات : ۴۰)

حصہ 'ب' (مختصر جواب کے سوالات)

ہدایات :- تمام سوالات کے جوابات تحریر کیجیے۔

۱۰

۲- مندرجہ ذیل میں سے کسی ایک موضوع پر کہانی تحریر کیجیے۔

☆ اتفاق میں برکت ☆ جیسی کرنی ویسی بھرنی ☆ سانچ کو آج نہیں ☆ بدی کا انجام

اس سوال میں کہانی کے لیے چار عنوانات دیے جائیں گے جن میں سے کسی ایک عنوان پر کہانی لکھنا ہوگی۔

۱۰

۳- دو دوستوں کے درمیان روز بروز بڑھتی ہوئی مہنگائی کی صورت حال پر مکالمہ تحریر کیجیے۔

یا

استاد اور شاگرد کے درمیان امتحان کے مسئلے پر مکالمہ تحریر کیجیے۔

اس سوال میں مکالمہ لکھنے کے لیے دو عنوانات دیے جائیں گے جن میں سے کسی ایک عنوان پر تحریر کرنا ہوگا۔

۱۰

۴- اپنے دوست کو خط لکھ کر کراچی کے تفریحی مقامات کو دیکھنے کی دعوت دیجیے۔

یا

کسی اخبار کے مدیر کے نام خط لکھ کر بجلی کی لوڈ شیڈنگ کے حوالے سے عوام کو درپیش پریشانیوں کا ذکر کیجیے۔

اس سوال میں خط لکھنے کے لیے ایک رسمی اور دوسرا غیر رسمی عنوان دیا جائے گا جن میں سے

کسی ایک عنوان پر خط تحریر کرنا ہوگا۔

۱۰

۵- مندرجہ ذیل میں سے کسی ایک پیرا گراف کا اردو میں ترجمہ کیجیے۔

(i) Nature guards her secrets very cleverly. After centuries of toil and discovery, man still knows only a very small fraction of what there is to know. After centuries of attempts to master the forces of Nature, they are not fully tamed or harnessed. Her power to destroy the work of man still remains supreme.

(ii) For seven long weeks the siege went on. Food began to run short. One might have expected that this would have led to discontent or even to open mutiny, specially in a force where the men differed in race, religion and language. But this was no the case. The men put up with the hardships of the siege without complaint.

اس سوال میں نصابی کتاب سے کوئی دو انگریزی پیرا گراف دیے جائیں گے جس میں سے

کسی ایک کا اردو ترجمہ کرنا ہوگا

(نشانات : ۴۰)

حصہ 'ج' (تفصیلی جواب کے سوالات)

۲۰

۶- مندرجہ ذیل اقتباس کو پڑھ کر سوالات کے جواب تحریر کیجیے۔

"بعض لوگ تو صرف کتابوں کے پڑھنے کے شوق میں دور دراز ملکوں کا سفر کرتے ہیں اور وہاں کے مشہور کتب خانوں کا مطالعہ کرتے ہیں۔ علی گڑھ تحریک کے مشہور بانی سر سید نے برطانیہ کے سفر میں یہ غرض بھی رکھی تھی کہ وہ برطانیہ کی لائبریریوں میں جا کر ان کتابوں کا مطالعہ کریں گے جو سوائے وہاں کے اور کہیں نہیں ملتی تھیں وہ سال بھر تک مسلسل لندن کی لائبریریوں میں کتابوں کا مطالعہ کرتے رہے۔"

۴

(الف) مندرجہ بالا عبارت کا موزوں عنوان تحریر کیجیے:

۴

(ب) علی گڑھ تحریک کے بانی کون تھے؟

۴

(ج) سر سید نے کس ملک کا سفر کیا؟

۴

(د) سر سید نے برطانیہ کے کتب خانوں میں کتنے عرصے کتب بینی کی ہے؟

۴

مندرجہ بالا عبارت کا اپنے الفاظ میں خلاصہ تحریر کیجیے:

نصابی کتاب سے کوئی ایک عبارت دی جائے گی جس میں سے تین سوالات عبارت سے متعلق، ایک سوال عنوان تجویز کرنے کے لیے اور ایک سوال خلاصہ تحریر کرنے کے لیے دیا جائے گا

۲۰

۷- مندرجہ ذیل میں سے کسی ایک عنوان پر مضمون تحریر کیجیے:

☆ میری کافٹن کی سیر ☆ میں نے پہاڑوں کی سیر کی ☆ معاشرے میں انصاف ضروری ہے ☆ اگر میں صدر پاکستان ہوتا

اس سوال میں چار عنوانات بالترتیب بیانیہ، اظہاریہ، نگریہ اور تصویر مضمون لکھنے کے لیے دیے جائیں گے

جن میں سے کسی ایک موضوع پر مضمون تحریر کرنا ہوگا۔

بورڈ آف انٹرمیڈیٹ ایجوکیشن، کراچی

انٹرمیڈیٹ ایگزامینیشن ماڈل پیپر ۲۰۲۵ء (تخفیف شدہ نصاب کے مطابق)

اردو (آسان) (پرچہ دوم)

(تمام گروپس کے لیے)

کل نشانات: ۲۰

وقت: ۲۰ منٹ

(نشانات: ۲۰)

حصہ 'الف' (کثیر الانتخابی سوالات)

نوٹ: (i) اس حصہ میں ۲۰ جزوی سوالات ہیں۔ تمام جزوی سوالات کے جوابات مطلوب ہیں اور ہر جزو کا ایک نمبر ہے۔
(ii) سوال یا اس کا جزو انتخابی کا پی میں نقل مت کیجیے۔ سوال کے اصل نمبر اور جزو کے سامنے صرف مکمل جواب تحریر کیجیے۔

۱۔ مندرجہ ذیل میں سے ہر ایک کے لیے درست جواب منتخب کیجیے:-

- (i) فورڈ کا کارخانہ اس ملک میں واقع ہے:
- (ii) اپنے مقصد کے حاصل کرنے کے لیے ذرائع کا ڈھونڈنا اور ان سے فائدہ اٹھانے کا نام یہ ہے:
- (iii) ”پھیل جاؤ زمین پر اور خدا کا رزق تلاش کرو“ یہ اس سورۃ کی ایک آیت کا مفہوم ہے:
- (iv) تمہید، اصل موضوع اور اختتام یعنی بحث کا مختصر نتیجہ اس صنف ادب کے حصے ہیں:
- (v) اس سے بڑھ کر انسان کا کوئی دوست نہیں:
- (vi) علی گڑھ تحریک کے بانی یہ ہیں:
- (vii) ٹیپوستان شاہ کا مزار یہاں واقع ہے:
- (viii) یہ ایک مشہور انگریز سپہ سالار تھا جو ٹیپو سلطان سے لڑا:
- (ix) Punctuation کو اردو میں کہتے ہیں کہانی لکھنے اور کہانی سنانے کے لیے ضرورت ہوتی ہے:
- (x) اس کا ترجمہ لفظ بہ لفظ نہیں ہو سکتا:
- (xi) اس کی ایجاد انسانی عقل کے عجیب کمالات میں سے ہے:
- (xii) کونٹ زہپلن کا تعلق اس ملک سے تھا:
- (xiii) امریکانے اس گیس کی دریافت کی:
- (xiv) اچھی کہانی لکھنے کے لیے ضروری ہے کہ پہلے ہی سے دماغ میں ہو:
- (xv) مکالمے کو دل چسپ بنانے کے لیے ضروری ہے کہ کوئی بھی کردار یہ نہ کرنے لگے:
- (xvi) آدمی ملاقات اس صنف ادب کو کہا جاتا ہے:
- (xvii) نصاب میں شامل منشی حبیب اللہ خان کے نام ان کا لکھا ہوا خط ہے:
- (xviii) یہ صنف ادب کسی نتیجے پر ختم ہوتی ہے، کہانی کی طرح یکا یک ختم نہیں ہوتی:
- (xix) خلاصہ مضمون یا عبارت کا اتنا حصہ ہونا چاہیے:
- (xx) بھالو کی مرغوب غذا ہے:

-----XXXXXX-----

BOARD OF INTERMEDIATE EDUCATION, KARACHI
INTERMEDIATE EXAMINATION

MODEL PAPER-2025 (ACCORDING TO REDUCED SYLLABUS – 2025)

ENGLISH NORMAL PAPER – I

Max. Marks: 80

(For All Groups)

Time: 2 hours 40 minutes

SECTION ‘B’ (SHORT-ANSWER QUESTIONS) (40 Marks)

NOTE:

Answer **Ten** part-questions from this section, selecting at least **Two** part questions from each sub-section. All part questions carry equal marks.

SUB-SECTION I (Reading Comprehension)

2. i) What are the differences between a job and a career?
- ii) How is technology boon for students?
- iii) Why is self-reliance important for one’s development?
- iv) Write down the central theme of the reading-text ‘Struggle for an Education.’

SUB-SECTION II (Poetry)

- v) Describe the difficulties which Khahoris face during their life?
- vi) How was the Abbot benefited by his shepherd’s bold answers?
- vii) What do people still maintain about Lucy Gray and why?
- viii) What was the dispute between the king and the Abbot?

SUB-SECTION III (Play – A Visit to a Small Planet)

- ix) Why did Kreton want to visit earth?
- x) How is media depicted in the play?
- xi) What extraordinary powers does Kreton possess?
- xii) Who is Aide? What is his role in the play?

SUB-SECTION IV (Grammar)

- xiii) Change the narration:
 - a) My mother said, ‘May you succeed in life.’
 - b) The beggar said to the passerby, ‘Please, give me some money.’
 - c) Luqman shouted, ‘Hurrah! I have been granted scholarship.’
 - d) ‘Do you know the way to the Dolman Mall?’ Maryam asked me.
- xiv) Change the voice:

a) I will visit England next year.	b) Can Saima type the paper on time?
c) He must play hockey.	d) Open the window.
- xv) Spot the errors, and correct the verb, preposition & adjective in the following sentences:

a) I am teaching in a local college for the last 28 years.	b) Khadija was migrated to Philippines after marriage.
c) Adam is accused with mobile snatching.	d) Are you interested for going abroad?
- xvi) Do as directed:
 - a) Ali _____ speak three languages. (Use modal verb expressing ability)
 - b) If you lose your wallet, (Complete the sentence)
 - c) We go to the park in the evening. (Put the adverb ‘often’ in the right place)
 - d) My sister lives in the USA. My brother lives in Canada. (Make a compound sentence)

SECTION ‘C’ (DETAILED-ANSWER QUESTIONS) (40 Marks)

NOTE:

Answer all questions from this section. All questions carry equal marks.

3. Read the following passage and answer the questions that follow:

OR

Make a précis of the following passage and suggest a suitable title to it:

One day, as a small child, Thomas Edison, came home from school and gave a paper to his mother. He said to her, “Mom, my teacher gave this paper to me and told me only you are to read it. What does it say?” Her eyes welled with tears as she read the letter out loud to her child. “Your son is a genius. This school is too small for him and doesn’t have good enough teachers to train him. Please teach him yourself.” His mother did just that, until she fell ill and passed away. Many years after Edison’s mother died, he became one of the greatest inventors of the century. One day he was going through some of her things and found the folded letter that his old teacher wrote to his mother that day. He opened it. The message written on the letter was “Your son is mentally deficient. We cannot let him attend our school anymore. He is expelled.” Edison became emotional while reading it and then wrote in his diary: “Thomas A. Edison was a mentally deficient child whose mother turned him into the genius of the century.” A positive word of encouragement can help change someone’s life.

- i) Why didn’t Edison’s mother tell him about the actual contents of letter?
- ii) How did Edison react when he came to know about the truth of the letter?
- iii) Identify regular and irregular verbs:

*	welled	*	fell	*	wrote	*	was
---	--------	---	------	---	-------	---	-----
- iv) Give meaning of the following phrasal verbs:

*	passed away	*	going through
---	-------------	---	---------------

4. Write an email to the Principal of the college requesting him to arrange a program about the impact of social media on the mental health of students.

OR

Write a report about Independence Day Celebration in your college.

5. Write a narrative account on a Memorable Reunion of Friends.

OR

Write an essay to compare and contrast on any **One** of the following:

- | | |
|---------------------------------------|---|
| a) Social Media v/s Traditional Media | b) E-Marking System v/s Manual Assessment |
| c) Public v/s Private Colleges | d) Artificial Intelligence v/s Human Intelligence |

6. Draft a covering letter with a CV for the post of Software Engineer.

According to New Book

BOARD OF INTERMEDIATE EDUCATION, KARACHI

INTERMEDIATE EXAMINATION

MODEL PAPER-2025 (ACCORDING TO REDUCED SYLLABUS – 2025)

ENGLISH NORMAL PAPER – I

Max. Marks: 20

(All Groups)

Time: 20 minutes

SECTION ‘A’

(MULTIPLE CHOICE QUESTIONS) – (M.C.Qs.)

Marks : 20

- NOTE:** i) This section consists of 20 part questions and all are to be answered. Each part question carries one mark.
ii) Do not copy the part questions in your answerscript. Write only the answer in full against the proper number of the question and its part.

1. Choose the correct answer for each from the given options:

- i) The correct title of Booker T. Washington’s reading text is:
* Struggle for Education * Struggle for a Education
* Struggle for an Education * Struggle for the Education
- ii) ‘Giving much trouble to their bodies, they sought their goals.’ This line is taken the poem:
* Ozymandias * Selection from Sur Khahori
* Lucy Gray * The Abbot of Canterbury
- iii) ‘In the fall of 1872, I determined to make an effort to go.’ The underlined word is used as:
* adverb * adjective * noun * verb
- iv) ‘True seekers still exists,’ is an example of this poetic device:
* oxymoron * onomatopoeia * metaphor * alliteration
- v) The statues of lions that are found everywhere in Singapore are made up of this stone:
* limestone * marble * granite * concrete
- vi) The guiding principle of the Quaid-e-Azam was:
* selflessness * justice * courage * bravery
- vii) Kreton says that human beings are like
* housefly * dragonfly * moth * butterfly
- viii) The name of General Powers is:
* Sam * Tom * Max * Bob
- ix) Scene II of the play “A Visit to a Small Planet” is set in this room:
* bed * dining * living * study
- x) The word “consented” means:
* agreed * disagreed * similar * dissimilar
- xi) E.B. White used to go to the lake in Maine for:
* swimming * fishing * photography * water skiing
- xii) The phrase “shabby cab” refers to:
* tidy taxi * untidy taxi * broken taxi * costly taxi
- xiii) According to the author Ralph Waldo Emerson imitation is:
* evil * crime * suicide * sin
- xiv) This is an example of telepresence:
* traditional * manual * conventional * online
- xv) Singapore is recognized as this type of the world:
* Ms. Clean * Mrs. Clean elephants
* Mr. Clean * Miss. Clean
- xvi) Jobs and careers are thought to be _____ changeable. (Identify the correct prefix):
* super * semi * non * inter
- xvii) In the sentence ‘Maryam bakes excellently.’ The underlined verb is:
* transitive * intransitive * auxiliary * modal
- xviii) In the sentence ‘Mary bakes cakes excellently.’ The underlined verb is: :
* transitive * intransitive * auxiliary * modal
- xix) Identify the irregular verb:
* reach * arrive * find * call
- xx) Identify the regular verb:
* take * write * fall * live

-----XXXXXXXXXX-----

BOARD OF INTERMEDIATE EDUCATION, KARACHI

INTERMEDIATE EXAMINATION

MODEL PAPER-2025 (ACCORDING TO REDUCED SYLLABUS – 2025)

ENGLISH NORMAL PAPER – II

Max. Marks: 80

(All Groups)

Time: 2 hours 40 minutes

SECTION 'B' (SHORT-ANSWER QUESTIONS) (Marks : 40)

NOTE:

Answer **Ten** part questions from this section, taking at least **Two** part questions from each sub-section. All part questions carry equal marks.

SUB-SECTION I (Intermediate English Book-II)

2. i) What were the charges against Mr. and Mrs. Jones?
ii) How can Asian countries preserve independence?
iii) What forces does Einstein blame for the persistence of war?
iv) What was the supreme manifestation of the Miller's selfishness that caused Hans to lose his life?

SUB-SECTION II (Selections from English Verse : PART-II)

- v) What examples has Hugh Clough given in his poem 'Say Not the Struggle Naught Availeth' to support his strong belief that struggle ultimately gets rewarded?
vi) Explain the theme of 'Music When Soft Voices Die'.
vii) Analyze Ulysses' character in light of the line: 'To strive, to seek, to find, and not to yield'.
viii) Who was Ulysses and what was his goal in life?

SUB-SECTION III (The Prisoner of Zenda)

- ix) Why was lady Mauban against Michael becoming the king of Ruritania?
x) Write a few lines about Rudolph Elphberg OR Rupert of Hentzau.
xi) Why did Rassendyll plan to visit Ruritania secretly?
xii) Where was Rudolph Elphberg imprisoned and why?

SUB-SECTION IV (Grammar)

- xiii) Use any **Two** of the following phrasal verbs in sentences:
deal with, look down upon, bring up, take off, make out.
xiv) Use any **Two** of the following pair of words in your sentences: (four sentences)
college: collage; duel: dual; dead: dad; seen: scene; heroin: heroine; super: supper
xv) Match any **Four** of the following words of column 'A' with the meanings in column 'B':

Column 'A'	Column 'B'
endeavour	noisy fight
mastodon	effort
affray	useless
vain	happy
frolic	gigantic

SECTION 'C' (DETAILED-ANSWER QUESTIONS) (Marks : 40)

NOTE:

Answer all questions from this section. All questions carry equal marks.

3. Write character-sketch of Lady Mauban OR Rudolf Rassendyll
OR
Give critical appreciation of the poem "Lines from Ulysses".
4. Write an essay on any **One** of the following topics:
i) AI vs HI ii) Safety Measures against Heatstroke
iii) Importance of Pollution-Free Environment iv) The Role of Technology in Modern Communication
5. Change the narration:
i) The teacher said to her students, 'Do you get my point?'
ii) Luqman said, "Prevention is better than cure."
iii) The traveler said to the passerby, 'Where can I get food and lodging for the night?'
iv) The notice in the shopping mall says, 'Beware of pickpockets.'
v) 'What a terrific shot!' said the spectator.
6. Read the following passage and answer the questions given below:
'You are certainly very thoughtful about others,' answered the wife, as she sat in her comfortable armchair by the big pinewood fire; "very thoughtful indeed. It is quite a treat to hear you talk about friendship. I am sure the clergyman himself could not say such beautiful things as you do, though he does live in a three-storeyed house, and wear a gold ring on his little finger.'
- i) Identify the person who is referred in the passage as very thoughtful about others? **2**
ii) State the qualities of the person addressed? **2**
iii) Give meaning of the following words: **3**
* thoughtful * indeed * treat
iv) Identify the word classes of the following words: **3**
* certainly * pinewood * though

-----XXXXXXXXXX-----

BOARD OF INTERMEDIATE EDUCATION, KARACHI

INTERMEDIATE EXAMINATION

MODEL PAPER-2025 (ACCORDING TO REDUCED SYLLABUS – 2025)

ENGLISH (C) NORMAL PAPER – II

Max. Marks: 20

(All Groups)

Time: 20 minutes

SECTION ‘A’

(MULTIPLE CHOICE QUESTIONS – M.C.Qs.)

Marks : 20

NOTE:

- i) This section consists of 20 part questions and all are to be answered. Each part question carries one mark.
- ii) Do not copy the part questions in your answer book. Write only the answer in full against the proper number of the question and its part.

1. Choose the correct answer for each from the given options:

- i) ‘Zenda’ is the name of a:
* river * flower * girl * town
- ii) In the title of Chapter 11 ‘Hunting a Very Big Boar’ of the novel, the underlined word referred to:
* Rupert * Detchard * Michael * Rassendyll
- iii) This person sent a letter to warn Princess Flavia not to accept Michael’s invitation:
* Fritz * Sapt * Rassendyll * Mauban
- iv) Vasco da Gama was an explorer from this continent:
* Africa * Asia * North America * Europe
- v) The word ‘bogy’ used in ‘The World as I See It’ means a thing which is:
* wonderful * hopeful * fearful * fateful
- vi) ‘Rose leaves when the rose is-----’ (Complete the line):
* alive * dead * strong * weak
- vii) Ulysses represents human:
* weakness * greed * curse * struggle
- viii) By profession, Liaquat Ali Khan was a:
* teacher * businessman * doctor * lawyer
- ix) At the end of “Twenty Minutes with Mrs. Oakentubb” this character falls dead:
* Korean girl * Mrs. Judy Oakentubb
* Porter * He
- x) “Ulysses” was the King of:
* Greece * Spain * England * Ithaca
- xi) In the title of the essay ‘Reflections on the Reawakening East’ the underlined word means:
* reunion * recognition * revival * resuming
- xii) The dam in ‘The Day the Dam Broke’ was located on the side of:
* East * West * North * South
- xiii) The words ‘the main’ and ‘the deep’ in English poetry are used for:
* canal * river * sea * ocean
- xiv) Shelley was a generous admirer of the poet:
* Wordsworth * Milton * Keats * Pope
- xv) Fritz stated ‘Heaven doesn’t always make the right men ...’:
* Monarchs * Kings * Princes * Dukes
- xvi) The dialogue, ‘Say I am a Christian---or say I’m jealous,’ is spoken by:
* Rose * Countess Helga * Lady Mauban * Princess Flavia
- xvii) Rudolf Elphberg V invited Rudolf Rassendyll at/in the:
* palace * shooting lodge * rest house * hotel
- xviii) Arthur Hugh Clough is a poet of this era:
* Elizabethan * Romantic * Victorian * Modern
- xix) According to Sir James Jeans life can only exist inside a narrow zone that is:
* low * temperate * high * hot
- xx) The literary device used in the line ‘One equal temper of heroic hearts,’ is:
* alliteration * imagery * metaphor * simile

-----XXXXXX-----

پورہ آف انٹرمیڈیٹ ایجوکیشن کراچی

انٹرمیڈیٹ ایجوکیشن ماڈل پپر ۲۰۲۵ ع

۲۹ جنوری ۲۰۲۵ ع (تخصیص شدہ نصاب مطابق) ۲۰۲۵ ع

کل ماٹریکل نمبر ۲۰

(سہی گروپن لاء)

وقت: ۲۵ منٹ

سمتہی لائریہی

حصہ الف (کثیرالانتخابی سوال)

نوٹ:- (۱) من حصی پر ویہ جزوی سوال آہن۔ سہی سوالن جا جواب گھریل آہن
ہر ہک سوال جہی ہک مارک آہی۔

(۲) پنہنجی جواب کاپی کر جزی جزوی سوال کی نقل نہ کر یوں سوال ان جہی
جزیا جو درست نہیں پیس مطابق آہی صرف مکمل جواب تحریر کر یوں۔

1۔ ہسین مان ہر ہک جہی لاء درست جواب جہی چونہ کر یوں۔

(۱) آہن ڈرا ڈیٹ، جہی اصطلاحی معنی آہی:

* آہن پر کڈون پوٹ * نظر ختر شیر

* نظر ست شیر * تمام ضعیف شیر

(۲) حکیم فتح محمد سوهاٹی ادبی بولی آہن خون خوننا بیان کیوں آہن:

* ست * ف

* یارمن * تیرہن

(۳) نسج پھار پینان غائب تی ویوہو، ذیل ست مان کھا شکار جہی مراد آہی تہ:

* صبح تی ویوہو * جھڑ تی ویوہو

* رات تی ویوہو * سج لہی ویوہو

(۴) کھاپی چوتیہون در پر لیکک جو انداز بیان آہی:

* مزاحیہ * جا سوسی

* اصل جہی * تاسریخی

(۵) مقدمہ لطیفی کتاب کلیل آہی:

* غلام محمد شاہوٹی * داعیہ نبی بخش بلوچ

* مرزا قلیچ بیگ * داعیہ ہوتچند مولچند گرنجستاٹی

(۶) ہیٹ ذیل کھڑی پر نا لہائی لفظ لکھو:

* سوال * کمال

* جمال * زوال

** ملندت **

(vii) پيريا سنڌي تي ماحول وڌو آهي ۽

* هالديت جو ڏانهن * * ٻارن جو ڏانهن

* مزدورن جو ڏانهن * * مورتن جو ڏانهن

(viii) ذات 'ڪمايا' ٿيل آهي ۽

* جمال اڀرو * * نجوم عباسي

* اياز قادي * * نسيم گل

(ix) 'ڏنگي' لفظ جي معنيٰ آهي ۽

* جهاز * * ٻيڙي

* ٻيڙي * * گندي

(x) الطاف شيخ جي ادبي سڃاڻپ آهي ۽

* ڪهاڻيڪار * * ناول نگار

* ڊراما نگار * * سفرناما نگار

(xi) لنگر لفظ جي معنيٰ آهي :

* بھري جهاز جو سامان * * بھري جهاز جو ڪپڙو

* بھري جهاز جو مسافر * * بھري جهاز جو ٻيڙو

(xii) هيءَ بيت آهي: وڻ ڪيو وڻ، پرت نه چئن پاڻ ۾،
پسو پکيڙڻ، ماڙهڻا سڀ گهوڙو.

* سرڏهر جو * * سرسارنگ جو

* سر سامونڙي جو * * سر ڪيڙارو جو

(xiii) ڪافيءَ جو بادشاه سنڌيو ويندو آهي ۽

* ساميءَ کي * * سچل سرمست کي

* شيخ اياز کي * * مصري شاه کي

(xiv) مرثئي جو بادشاه سنڌيو وحيي نوري

* سيد ثابت علي شاه * * مرزا قليچ بيگ

* شاه عبداللطيف ڀٽائيءَ * * سانگي

(xv) غزل ۽ مقطع ٻنهي جي معنيٰ آهي :

* پيريا شعر کي * * وچئين شعر کي

* آخري شعر کي * * سڀني شعرن کي

- (xvi) چوڏهين ڇپڻ لاءِ 'ڪتاب لکيل آهي' :
 * ڊاڪٽر سحر امداد * امداد حسيني
 * شيخ اياز * استاد بخاري
- (xvii) 'نظم سو ديس مسافر منهنجو ڙهي' آهي :
 * استاد بخاري جو * شيخ اياز
 * توير عباسي * سامي
- (xviii) 'دنگي' منجهه دريا' ڊرامو لکيل آهي :
 * علي بابا * نجم عباسي
 * اياز قادري * جمال ابڙو
- (xix) پاڪستان جي قوميت جو مقصد' تقرير جو متن آهي :
 * قائد اعظم جي * لياقت علي خان جي
 * ذوالفقار علي ڀٽو جي * بينظير ڀٽو جي
- (xx) شاهه عبداللطيف ڀٽائيءَ جي سُرَن جو تعداد آهي :
 * 20 * 25 *
 * 30 * 40 *
-

پورٽ آف انٽر ميڊيٽ ايڊيوڪيشن ڪراچي

انٽر ميڊيٽ ايڊيوڪيشن ماڊل پير ۲۰۲۵ع

۲۹ جنوري ۲۰۲۵ع (تخفيف شده نصاب مطابق) ۲۰۲۵ع

وقت: ۲ ڪلاڪ ۴۵ منٽ

(سڀني گروپن جي لاءِ)

سنڌي لائبريري

حصو ٽي (مختصر جوابن جا سوال) (مارڪون: ۴۰)

نوٽ: ۱- هن حصي مان ڪن به چئن جزوي سوالن جا جواب تحرير ڪريو. سڀني سوالن جون مارڪون مساوي آهن.

۲- (i) هيٺين مان ڪنهن به هڪ شاعر جو مختصر تعارف لکيو.

- * شاه عبداللطيف ڀٽائي
- * شيخ اياز
- * سچل سرمست
- * استاد بخشاڻي

(ii) پورهيتن جو عالمي ڏينهن ڇو ملهائون ويندو آهي؟ مختصر بيان ڪريو.

(iii) عام سنڌي شاعريءَ مان ڇا مراد آهي؟

(iv) هيٺ ڏنل لفظن جون معنائون لکي جملن ۾ ڪم آڻيو:

- * پانت پانت
- * شهتير
- * ساهت
- * افق

(v) هيٺ ڏنل لفظن جا ضد لکيو.

- * رات
- * اٺ
- * هاڻي
- * مائي
- * ماڻهي
- * بندو

(vi) هيٺ ڏنل ليکڪن مان ڪنهن به ٻن جو مختصر تعارف لکيو.

- * حليم فتح محمد سيوهاڻي
- * ڊاڪٽر هوتچند مولچند گربخشاڻي

- * ڊاڪٽر نبي بخش بلوچ
- * علامه آرزو آرزو قاضي

(vii) ڪهاڻي اتر مان نه ڪندس ۾ ڪهڙين سماجي برائين جو ذڪر ٿيل آهي؟

(viii) هيٺين مان ڪنهن به ٻن صنفن جو مختصر تعارف ڪريو.

- * ڪهاڻي
- * ڊرامو

- * اتر ڪهاڻي
- * سفرنامو

حصو چار (تفصيلي جوابن جا سوال) (مارڪون: ۴۰)

نوٽ: ۱- هن حصي مان ڪنهن به ٻن سوالن جا جواب تحرير ڪريو. سڀني سوالن جون مارڪون مساوي آهن.

۳- هيٺين مان ڪنهن به هڪ تي مضمون لکيو.

- * جديد دور ۾ ڪمپيوٽر جي تعليم جي اهميت * مذهبي رواداري

- * ملڪي ترقيءَ ۾ نوجوانن جو ڪردار * ماڻهولائي تي آلودگي

.....

۳۶ - ٻولي جا سڀني جيئي توڙي ادبياتي جون خصوصيات بيان ڪريو.

علامه آءِ آءِ قاضي پنهنجي مضمون ۾ عظيم شاعر جا ڪهڙا معيار بيان ڪيا آهن - تفصيلي جواب ڏيو.

۵ - هيٺين مان ڪنهن به چئن جي وصف بيان ڪريو.

* اسم استقبال * فعل متعدي

* استعارو * غزل

* بيت * رديفا

۴ - هيٺين مان ڪنهن به ٻن شعرن جي سمجهاڻ ڏيو.

* تون حبيب تون طبيب ، تون درد جي دوا

جانب منهنجي جيءَ ۾ آزار جا انواع

صاحب ذبح شفا ، ميان مريضن تي

* فصل جي خواصن ۾ وسري اصل ويو ،

سنگ چوندي نه ڪانا ياد پيا .

* موتي ايئن نه رول ، تون موتي ايئن نه رول ،

آءُ ڀليان ٿو جهول ، تون موتي ايئن نه رول ،

* جتي لڪ بگي ، جتي اڪ تپن ،

سو ديس مسافر منهنجو ٿي !

جت سچ ڦلا تي نعري تو

۽ آڇ آلا تي نعري تو

جت ڏهن ڪر هائج جئن ڪڙهن ،

سو ديس مسافر منهنجو ٿي !

بورڈ آف انٹرمیڈیٹ ایجوکیشن، کراچی

کتاب کے مطابق

انٹرمیڈیٹ ایگزیمینشن ماڈل پیپر ۲۰۲۵ء اسلامی تعلیم (لازمی)

وقت : اگھنٹہ ۴۵ منٹ (تخفیف شدہ نصاب کے مطابق) (تمام گروپس کے لئے) کل نشانات : ۴۰

حصہ 'ب' (مختصر جواب کے سوالات) (کل نشانات : ۲۰)

SECTION "B" (Short - Answer Questions) (20 Marks)

نوٹ:- اس حصہ سے تمام سوالات کے جوابات تحریر کیجئے۔

Note: Answer all questions from this section.

- ۲- (الف) مندرجہ ذیل قرآنی آیات میں سے کسی دو کا اردو، سندھی یا انگریزی میں ترجمہ اور تشریح کیجئے:-
2. (a). Translate and explain any **Two** of the following Quranic verses in Urdu, Sindhi or English: 12

(i) فِي قُلُوبِهِمْ مَّرَضٌ فَزَادَهُمُ اللَّهُ مَرَضًا وَلَهُمْ عَذَابٌ أَلِيمٌ بِمَا كَانُوا يَكْذِبُونَ

(ii) وَإِذْ قَالَ رَبُّكَ لِلْمَلٰئِكَةِ اِنِّي جَاعِلٌ فِي الْاَرْضِ خَلِيْفَةً قَالُوا اَتَجْعَلُ فِيهَا مَنْ يُفْسِدُ فِيهَا وَيَسْفِكُ الدِّمَآءَ وَنَحْنُ نُسَبِّحُ بِحَمْدِكَ وَنُقَدِّسُ لَكَ قَالَ اِنِّي اَعْلَمُ مَا لَا تَعْلَمُونَ

(iii) يٰۤاَيُّهَا الَّذِيْنَ ءَامَنُوْا اِذَا لَقِيْتُمْ الَّذِيْنَ كَفَرُوْا زَحٰفًا فَلَا تُولُوْهُمُ الْاَدْبَارَ

(iv) فَلَمْ تَقْتُلُوْهُمْ وَلٰكِنَّ اللّٰهَ قَتَلَهُمْ وَمَا رَمَيْتْ اِذْ رَمَيْتَ وَلٰكِنَّ اللّٰهَ رَمٰى وَلِيُّبٰى

الْمُؤْمِنِيْنَ مِنْهُ بَلَاٌۢءٌ حَسَنًا اِنَّ اللّٰهَ سَمِيْعٌ عَلِيْمٌ

- (ب) مندرجہ ذیل احادیث میں سے کسی ایک کا اردو، سندھی یا انگریزی میں ترجمہ اور تشریح کیجئے:-
2. (b) Translate and explain any **One** of the following Quranic verses in Urdu, Sindhi or English:

(i) لَوْ يُّؤْمِنُ مِنْ اَحَدِكُمْ حَتّٰى يُّحِبَّ لِاَخِيْهِ مَا يُحِبُّ لِنَفْسِهٖ۔

(ii) مَنْ يُّرِدِ اللّٰهُ بِهٖ خَيْرًا يُّفَقِّهْ فِي الدِّيْنِ، وَاِنَّمَا اَنَا قَاسِمٌ وَاللّٰهُ يُعْطِيْ۔

- ۳- مندرجہ ذیل میں سے چار جزوی سوالات کے جوابات تحریر کیجئے۔ تمام جزوی سوالات کے نشانات مساوی ہیں۔
3. Answer any **Four** part questions from the following. All part questions carry equal marks. 8

(i) سورہ بقرہ کی روشنی میں متقین کی صفات بیان کیجئے۔

(ii) حدیث کی روشنی میں صبر کی کتنی اقسام ہیں؟ تحریر کیجئے۔

(iii) جنگ بدر میں اللہ تعالیٰ نے مسلمانوں کی مدد کس طرح فرمائی؟

(iv) عقیدہ ختم نبوت کیا ہے؟ تحریر کیجئے۔

(v) صحاح ستہ یا اصول اربعہ کے نام مع مصنفین تحریر کیجئے۔

(vi) قرآن و حدیث میں کیا فرق ہے تحریر کیجئے۔

(vii) حقوق العباد کسے کہتے ہیں؟ تحریر کیجئے۔

(viii) "اخلاق و آداب" سے کیا مراد ہے؟ مثالوں سے واضح کیجئے۔

حصہ 'ج' (تفصیلی جواب کے سوالات) (کل نشانات : ۲۰)

SECTION "C" (Detailed - Answer Questions) (20 Marks)

نوٹ:- اس حصہ سے کسی دو سوالات کے جوابات تحریر کیجئے۔ تمام سوالات کے نشانات مساوی ہیں۔

Note: Answer any **Two** questions from this section. All questions carry equal marks.

۴- عقیدہ توحید کیا ہے؟ وضاحت کیجئے۔ نیز عقیدہ توحید کے انسانی زندگی پر اثرات کو بیان کیجئے۔

یا
ارکان اسلام کیا ہیں؟ زکوٰۃ کی اہمیت، فضائل اور مصارف زکوٰۃ تفصیل سے بیان کیجئے۔

۵- حضرت محمد مصطفیٰ خاتم النبیین ﷺ بحیثیت رحمۃ للعالمین پر مفصل نوٹ لکھیں۔

یا
حضرت امام ابوحنیفہؒ یا حضرت امام جعفر صادقؑ کے حالات زندگی اور عملی خدمات پر تفصیلی نوٹ تحریر کیجئے۔

-----XXXXXX-----

بورڈ آف انٹرمیڈیٹ ایجوکیشن، کراچی

وقت : ۱۵ منٹ
انٹرمیڈیٹ ایگزیمینشن ماڈل پیپر ۲۰۲۵ء اسلامی تعلیم (لازمی) کل نشانات : ۱۰
(تخفیف شدہ نصاب کے مطابق) (تمام گروپس کے لئے)

حصہ 'الف' (کثیر الانتخابی سوالات - M.C.Qs.) (نشانات : ۱۰)

- نوٹ : (i) اس حصہ میں سے دس جزوی سوالات ہیں۔ تمام جزوی سوالات کے جوابات مطلوب ہیں اور ہر جزو کا ایک نمبر ہے۔
(ii) اپنی جوابی کاپی میں جزوی سوال کو نقل نہ کیجئے۔ سوال اور اس کے جزو کا درست نمبر پرچہ کے مطابق لکھ کر صرف مکمل جواب تحریر کیجئے۔
۱۔ مندرجہ ذیل میں سے ہر ایک کے لئے درست جواب منتخب کیجئے:-
- (i) حضرت محمد مصطفیٰ خاتم النبیین ﷺ نے حج ادا کئے:
- ☆ ایک ☆ دو ☆ تین ☆ چار ☆
- (ii) دنیا کا سب سے پہلا انسان اس کا قائل تھا:
- ☆ آخرت ☆ تقدیر ☆ ختم نبوت ☆ توحید ☆
- (iii) موت کے بعد آنے والی زندگی کو کہا جاتا ہے:
- ☆ دنیا ☆ جنت ☆ جہنم ☆ آخرت ☆
- (iv) اسلام سے پہلے عرب معاشرے میں انکی کوئی عزت نہ تھی:
- ☆ یتامی کی ☆ غلاموں کی ☆ غریبوں کی ☆ عورتوں کی ☆
- (v) زبور ان پیغمبر پر نازل ہوئی:
- ☆ حضرت موسیٰ ☆ حضرت ابراہیم ☆ حضرت داؤد ☆ حضرت عیسیٰ ☆
- (vi) صبر کے لغوی معنی ہیں:
- ☆ برداشت کرنا ☆ چپ رہنا ☆ ظلم سہنا ☆ کچھ نہ کہنا ☆
- (vii) حضرت امام ابوحنیفہ سے منسوب کتاب کا نام ہے:
- ☆ المبسوط ☆ الزیادات ☆ الجامع الکبیر ☆ کتاب الآثار ☆
- (viii) سونے پر زکوٰۃ کا نصاب ہے:
- ☆ $6\frac{1}{2}$ تولہ ☆ $7\frac{1}{2}$ تولہ ☆ $8\frac{1}{2}$ تولہ ☆ $52\frac{1}{2}$ تولہ ☆
- (ix) روزے کو عربی میں کہتے ہیں:
- ☆ الشهر ☆ الصوم ☆ القدر ☆ القیام ☆
- (x) حقوق العباد کا معنی ہے:
- ☆ والدین کے حقوق ☆ اولاد کے حقوق ☆ بندوں کے حقوق ☆ زوجین کے حقوق ☆

-----XXXXXX-----

BOARD OF INTERMEDIATE EDUCATION, KARACHI
INTERMEDIATE EXAMINATION
MODEL PAPER-2025 (ACCORDING TO REDUCED SYLLABUS – 2025)

PAKISTAN STUDIES (COMPULSORY)
(For All Groups)

Max. Marks: 40

Time: 1 hour 45 minutes

SECTION 'B'
(SHORT-ANSWER QUESTIONS) (20 Marks)

Note: Answer any **Five** part questions. All part questions carry equal marks.

2. i) Explain two Nation Theory.
- ii) Write aims and objectives of All India Muslim League.
- iii) Describe 3rd June Plan 1947 in four sentences.
- iv) Describe four main Islamic provisions of Pakistan's 1973 constitution.
- v) Describe the importance of the geographical location of Pakistan.
- vi) Enlist Elements of Nation State.
- vii) How the Superior Judiciary safeguards Fundamental rights of the citizen?
- viii) Describe the importance of Agriculture and Industry in the economy of Pakistan.
- ix) Write names of any four organs of the United Nations.

SECTION 'C'
(DETAILED-ANSWER QUESTIONS) (20 Marks)

Note: Answer any **Two** questions from this Section. All questions carry equal marks.

3. How is the Urdu language symbol of National Identity?
4. Describe the culture of Pakistan as identity of the people.
5. Discuss the basic principles of the foreign policy of Pakistan.

-----XXXXXXXXXX-----

BOARD OF INTERMEDIATE EDUCATION, KARACHI
INTERMEDIATE EXAMINATION

MODEL PAPER-2025 (ACCORDING TO REDUCED SYLLABUS – 2025)

PAKISTAN STUDIES (COMPULSORY)

(For All Groups)

Max. Marks: 10

Time: 15 minutes

SECTION 'A'
(MULTIPLE CHOICE QUESTIONS) – (M.C.Qs.)

Marks: 10

NOTE:

- i) This section consists of 10 part questions and all are to be answered. Each part question carries 1 mark.
- ii) Do not copy the part questions in your answerbook. Write only the answer in full against the proper number of the question and its part.

1. Choose the correct answer for each from the given options:

- i) The demand of Pakistan is based on:
* Development of Muslims * Two Nation Theory
* Nationalism * Hindu Muslim Conflict
- ii) Pakistan became a member of the UNO in the year:
* 1947 * 1948 * 1949 * 1950
- iii) The biggest masjid of Pakistan is:
* Jamia Masjid Thatta * Faisal Masjid Islamabad
* Memon Masjid Karachi * Badshahi Masjid Lahore
- iv) The Indus Basin Treaty was signed in the year:
* 1960 * 1962 * 1964 * 1965
- v) The plan proposed by Lord Mountbatten is called:
* Cripps Mission Plan * Cabinet Mission Plan
* 3rd June Plan * Simon Commission Plan
- vi) The major import of Pakistan is:
* Petroleum * Leather Goods * Rice * Sports Goods
- vii) The separation of East Pakistan took place in the year:
* 1970 * 1971 * 1972 * 1973
- viii) Shah-Jo-Resalo is the poetic collection of:
* Shah Abdul Latif Bhittai * Waris Shah
* Hashim Shah * Bulleh Shah
- ix) Allama Iqbal was born in this city:
* Karachi * Lahore * Delhi * Sialkot
- x) The second five year plan of Pakistan started in the year:
* 1950 * 1955 * 1960 * 1965

-----XXXXXXXXXX-----

بورڈ آف انٹرمیڈیٹ ایجوکیشن، کراچی

انٹرمیڈیٹ ایگزامینیشن ۲۰۲۵ء (تخفیف شدہ نصاب کے مطابق) ۲۰۲۵ء

مطالعہ پاکستان (لازمی)

وقت : اگھنٹہ ۲۵ منٹ

(تمام گروپس کے لئے)

کل نشانات : ۴۰

حصہ 'ب' (مختصر جواب کے سوالات) (نشانات : ۲۰)

نوٹ :- مندرجہ ذیل میں سے کسی پانچ جزوی سوالات کے جوابات تحریر کیجئے۔ تمام جزوی سوالات کے نشانات مساوی ہیں۔

- ۲- (i) دو قومی نظریہ کی وضاحت کیجئے۔
- (ii) آل انڈیا مسلم لیگ کے اعراض و مقاصد بیان کیجئے۔
- (iii) 3 جون پلان 1947 کو 4 جملوں میں بیان کیجئے۔
- (iv) آئین پاکستان 1973 کی 14 اسلامی دفعات بیان کیجئے۔
- (v) پاکستان کے محل وقوع کی اہمیت بیان کیجئے۔
- (vi) کس طرح اعلیٰ عدلیہ پاکستان میں شہریوں کی بنیادی حقوق کی حفاظت کرتی ہے؟
- (vii) پاکستان کی معیشت میں زراعت اور صنعت کی اہمیت بیان کیجئے۔
- (viii) اقوام متحدہ کے کوئی سے 4 اداروں کے نام تحریر کیجئے۔

حصہ 'ج' (تفصیلی جواب کے سوالات) (نشانات : ۲۰)

نوٹ :- مندرجہ ذیل میں سے کسی دو سوالات کے جوابات تحریر کیجئے۔ تمام سوالات کے نشانات مساوی ہیں۔

- ۳- اردو زبان کس طرح قومی تشخص کی علامت ہے وضاحت کیجئے۔
- ۴- پاکستان کی شناخت اس کی ثقافت ہے وضاحت کیجئے۔
- ۵- پاکستان کی خاجہ پالیسی کے بنیادی اصولوں پر بحث کیجئے۔

-----XXXXXX-----

بورڈ آف انٹرمیڈیٹ ایجوکیشن، کراچی

انٹرمیڈیٹ ایگزامینیشن ۲۰۲۵ء (تخفیف شدہ نصاب کے مطابق) ۲۰۲۵ء

مطالعہ پاکستان (لازمی)

وقت : ۱۵ منٹ

(تمام گروپس کے لئے)

کل نشانات: ۱۰

حصہ 'الف' (کثیر الانتخابی سوالات) (نشانات: ۱۰)

نوٹ: (i) اس حصہ میں ۱۰ جزوی سوالات ہیں۔ تمام جزوی سوالات کے جوابات مطلوب ہیں اور ہر جزو کا ایک نمبر ہے۔
(ii) سوال یا اس کا جزو امتحانی کاپی میں نقل مت کیجیے۔ سوال کے اصل نمبر اور جزو کے سامنے صرف مکمل جواب تحریر کیجیے۔

(i) مطالبہ پاکستان کی اساس ہے:

☆ مسلمانوں کی ترقی ☆ دو قومی نظریہ ☆ قوم پرستی ☆ ہندو مسلم تنازعہ

(ii) پاکستان تنظیم اقوام متحدہ کا رکن اس سال میں بنا:

☆ 1947 ☆ 1948 ☆ 1949 ☆ 1950 ☆

(iii) پاکستان کی سب سے بڑی مسجد ہے:

☆ جامع مسجد ٹھٹھہ ☆ فیصل مسجد اسلام آباد ☆ مین مسجد کراچی ☆ بادشاہی مسجد لاہور

(iv) سندھ طاس معاہدہ پر دستخط اس سال میں ہوئے:

☆ 1960 ☆ 1962 ☆ 1964 ☆ 1965 ☆

(v) لارڈ ماؤنٹ بیٹن کے تجویز کردہ پلان کو کہا جاتا ہے:

☆ کرپس مشن پلان ☆ کابینہ مشن پلان ☆ ۳ جون پلان ☆ سائمن کمیشن پلان

(vi) پاکستان کی اہم درآمدیہ ہے:

☆ پٹرولیم ☆ چمڑے کا سامان ☆ چاول ☆ کھیلوں کا سامان

(vii) مشرقی پاکستان اس سال میں علیحدہ ہوا:

☆ 1970 ☆ 1971 ☆ 1972 ☆ 1973 ☆

(viii) شاہ جہور سالوان کی شاعری کا مجموعہ ہے:

☆ شاہ عبداللطیف بھٹائی ☆ وارث شاہ ☆ ہاشم شاہ ☆ بلھے شاہ

(ix) علامہ اقبال اس شہر میں پیدا ہوئے:

☆ کراچی ☆ لاہور ☆ دہلی ☆ سیالکوٹ

(x) پاکستان کا دوسرا پانچ سالہ منصوبہ اس سال میں شروع ہوا:

☆ 1950 ☆ 1955 ☆ 1960 ☆ 1965 ☆

-----XXXXXX-----

INSTRUCTIONS: All notations are used in their usual meanings. The use of scientific calculator is allowed. The Graph paper will be supplied on demand.

SECTION 'B' (SHORT-ANSWER QUESTIONS) (Marks: 40)

NOTE: Answer any **Ten part questions** from this section. All part questions carry equal marks.

2. i) Solve the complex equation: $p(z) = z^3 - 3z^2 + z + 5$

ii) Using properties, prove that $\begin{vmatrix} b+c & a & a \\ b & c+a & b \\ c & c & a+b \end{vmatrix} = 4abc$.

iii) Find the rank of $\begin{bmatrix} 1 & 2 & 3 \\ 2 & 3 & 4 \\ 0 & 2 & 2 \end{bmatrix}$ by reducing it to echelon form.

iv) If α , β and γ are the direction angles of a vector then show that $\sin^2 \alpha + \sin^2 \beta + \sin^2 \gamma = 2$.

v) Find the profit on Rs. 1000 for 5 years at 4% per annum compound profit.

vi) The A.M. of two numbers is 8 and H.M. is 6. Find the numbers.

vii) Find the sum of the series $\sum_{k=2}^{\infty} \frac{1}{(k^2 - 1)}$.

viii) There are 11 men and 9 women members of a club. How many committees of 8 members can be formed, having at least five women?

ix) By method of mathematical induction, prove that $7^n - 4^n$ is divisible by 3.

x) Find inverse of f and determine the domain and range of f^{-1} for the real valued function f defined by

$$f(x) = \frac{x-1}{x-4}, x \neq 4.$$

xi) Show that: $\frac{\cos 11^\circ + \sin 11^\circ}{\cos 11^\circ - \sin 11^\circ} = \tan 56^\circ$

xii) The area of triangle is 3.346 square units. If $\beta = 20.9^\circ$ and $\gamma = 117.2^\circ$. Find a and angle α .

xiii) Prove that $\frac{1}{r^2} + \frac{1}{r_1^2} + \frac{1}{r_2^2} + \frac{1}{r_3^2} = \frac{a^2 + b^2 + c^2}{\Delta^2}$

xiv) Find the maximum and minimum values of the function $y = \frac{1}{25 - 12\sin(3\theta - 2)}$

SECTION 'C' (DETAILED-ANSWER QUESTIONS) (Marks : 40)

NOTE: Answer any **Five questions** from this Section. All questions carry equal marks.

3. Find the inverse of the matrix $A = \begin{bmatrix} 2 & 5 & -1 \\ 3 & 4 & 2 \\ 1 & 2 & -2 \end{bmatrix}$ by using row operations.

4. Using vectors, prove that if one pair of opposite sides of a quadrilateral are congruent and parallel then it is a parallelogram.

5. A fair die is thrown twice. Find the probability that an even number of dots appears in first and the number of dots in the second throw is less than 4.

6. If $\frac{1}{x} = \frac{2}{5} + \frac{1.3}{2!} \left(\frac{2}{5}\right)^2 + \frac{1.3.5}{3!} \left(\frac{2}{5}\right)^3 + \dots$ then show that $4x^2 - 2x - 1 = 0$.

7. Show that: $\tan^{-1}\left(\frac{3}{4}\right) + \tan^{-1}\left(\frac{3}{5}\right) - \tan^{-1}\left(\frac{8}{19}\right) = \frac{\pi}{4}$.

8. Prove the fundamental law of trigonometry. $\cos(\alpha - \beta) = \cos \alpha \cos \beta + \sin \alpha \sin \beta$

9. The paths of two Aeroplanes A and B in the plane are determined by the straight lines $2x - y = 6$ and $3x + y = 4$ respectively. Graphically find the point where the two paths cross each other.

BOARD OF INTERMEDIATE EDUCATION, KARACHI

INTERMEDIATE EXAMINATION

MODEL PAPER-2025 (ACCORDING TO REDUCED SYLLABUS – 2025)

MATHEMATICS PAPER – I

Max. Marks:20

(Pre- Engineering, Science General & Humanities Groups – Regular & Private) Time: 20 Minutes

SECTION 'A' (MULTIPLE CHOICE QUESTIONS) – (M.C.Qs.)

(Marks : 20)

NOTE:

- i) This section consists of 20 part questions and all are to be answered. Each part question carries one mark.
 ii) Do not copy the part questions in your answerscript. Write only the answer in full against the proper number of the question and its part.
 iii) All notations are used in their usual meanings. The use of Scientific Calculator is allowed.

1. Choose the correct answer for each from the given options:

- i) For $i^n = 1$, the value of n is:
 * 1 * 2 * 3 * 4
- ii) If $z_1 = 2 + 3i$ and $z_2 = 1 - i$ then $|z_1 z_2| =$:
 * $\sqrt{13}$ * $\sqrt{15}$ * $\sqrt{26}$ * 26
- iii) In skew Hermitian matrix elements of main diagonal are always:
 * -1 * 0 * 1 * ± 1
- iv) If rank of matrix A is less than number of rows, then it always has:
 * no solution * many solutions * unique solution * trivial solution
- v) With two adjacent sides \vec{A} and \vec{B} , the magnitude of $\vec{A} \times \vec{B}$ represent the area of:
 * triangle * parallelogram * parallelepiped * tetrahedron
- vi) If $|\vec{a}| = 7$, $|\vec{b}| = 2$ and $\vec{a} \cdot \vec{b} = 0$, then the value of $|\vec{a} \times \vec{b}|$ is:
 * 2 * 7 * 9 * 14
- vii) The n th term of the sequence 1,8,27,64, is:
 * $n+1$ * n^2 * n^3 * n^2+1
- viii) The infinite geometric series is divergent, if the value of common ratio r is :
 * $\frac{1}{2}$ * 2 * $\frac{3}{4}$ * 0.33
- ix) $\sum_{n=2}^{20} n^0 =$:
 * 17 * 18 * 19 * 20
- x) A coin is tossed nine times repeatedly with 5 heads and 4 tails, then number of ways are:
 * 1 * 9 * 63 * 126
- xi) A single six sided die is rolled once. The probability of 2, given that an even number has already been rolled, is:
 * 1 * 2 * $\frac{1}{2}$ * $\frac{1}{3}$
- xii) In mathematical induction, $P(n)$ is generally used for:
 * polynomial of n * permutation of n * paradox of n * proposition of n
- xiii) The first negative term of the expansion $(1+x)^{\frac{7}{2}}$ is:
 * 3rd term * 4th term * 5th term * 6th term
- xiv) Domain of the function $f(x) = \frac{x^2}{x^2-9}$ is the set of all real numbers except:
 * 9 * -3 * 3 * ± 3
- xv) The maximum number of point(s) of intersection of a line and a parabola is / are:
 * 0 * 1 * 2 * 3
- xvi) $2\cos^2\left(\frac{\theta}{2}\right) - 1 =$:
 * $\sin \theta$ * $\cos \theta$ * $\tan \theta$ * $\cot \theta$

Continued on next page.....

xvii) A circle which touches one side of the triangle externally and two extended sides internally is called:
 * circumcircle * in-circle * tri-circle * escribed circle

xviii) The in-radius r of inscribed circle is:

* $r = \frac{\Delta}{s}$ * $r = \frac{s}{\Delta}$ * $r = \Delta s$ * $r = \frac{abc}{\Delta}$

xix) The period of $\tan 3x$ is:

* $\frac{\pi}{3}$ * 3π * $\frac{3}{\pi}$ * $\frac{1}{3\pi}$

xx) $\cos\left(\sin^{-1}\frac{1}{2}\right) = :$

* $\frac{2}{\sqrt{3}}$ * $2\sqrt{3}$ * $\frac{\sqrt{3}}{2}$ * $\frac{1}{2\sqrt{3}}$

-----XXXXX-----

BOARD OF INTERMEDIATE EDUCATION, KARACHI

INTERMEDIATE EXAMINATION

MODEL PAPER-2025 (ACCORDING TO REDUCED SYLLABUS – 2025)

MATHEMATICS PAPER – II

Max. Marks:80

(Pre- Engineering, Science General & Humanities Groups – Regular & Private) Time: 2 Hours 40 Minutes

INSTRUCTION: The use of scientific calculator is allowed. All notations are used in their usual meanings.

SECTION ‘B’ (SHORT-ANSWER QUESTIONS) (Marks: 40)

NOTE: Answer any **Ten part questions** from this section. All part questions carry equal marks.

2. i) Given that $f(x) = \frac{x+1}{2}$ and $g(x) = 2x - 1$ are two given bijective functions then show that $(gof)^{-1} = f^{-1}og^{-1}$.
- ii) Evaluate the limit. (Any one)

* $\lim_{x \rightarrow \pi} \frac{\sqrt{5 + \cos x} - 2}{\pi - x}$	* $\lim_{x \rightarrow 0} \frac{1 - \cos mx}{1 - \cos nx}$
--	--
- iii) Find the derivative of the function $f(x) = \sqrt{\tan x}$ by ab-initio / first Principle method.
- iv) Obtain the first four terms of the Taylor’s series for $f(x) = \ln x$ centered at $a = 1$.
- v) For what value of t , the vector function $\vec{r}(t) = \ln(t+3)\hat{i} + \frac{1}{t-1}\hat{j} + \frac{1}{e^t}\hat{k}$ is continuous.
- vi) Compute the definite integrals $\int_{-2}^2 (x^4 + 2x^2) dx$ by using basic properties.
- vii) Find the area, above the x -axis under the curve $y = 3x^2 + 2$ between the ordinates $x = 1, x = 2$.
- viii) Find the equation of the line which passes through $(5,6)$ and y -intercept is twice that of x -intercept.
- ix) Find the acute angle between lines $l_1 : y = 3x + 1$ and $l_2 : y = -4x + 3$.
- x) Find the equation of circle passing through origin and having intercepts 6 and 8 .
- xi) Find the standard equation of parabola whose latus rectum and vertex are the diameter and centre of the circle $x^2 + y^2 - 4x - 8y - 5 = 0$ respectively.
- xii) Find the distance between foci ellipse $9x^2 + 13y^2 = 117$.
- xiii) Obtain the differential equation by eliminating arbitrary constant from the relation $y = c_1 e^x + c_2 e^{-2x}$.
- xiv) If $u = x^2(y-x) + y^2(x-y)$ then show that $\frac{\partial u}{\partial x} + \frac{\partial u}{\partial y} = -2(x-y)^2$.

SECTION ‘C’ (DETAILED-ANSWER QUESTIONS) (Marks: 40)

NOTE: Answer any **Five** questions from this section. All questions carry equal marks, Q-3 is compulsory.

3. Evaluate any two of the following integrals:

(a) $\int \frac{(2x+1)}{(x-3)(x^2+1)} dx$	(b) $\int x \cot^{-1} x dx$	(c) $\int_2^{2\sqrt{3}} \frac{x^3 dx}{\sqrt{x^2+4}}$
---	-----------------------------	--
4. Differentiate the following:

* $y = \tanh^{-1}(\tan x^3)$	* $y = \cos^2 x$ w.r.t $\sin^2 x$
------------------------------	-----------------------------------
5. Find a right-angled triangle of maximum area with a hypotenuse of length h .
6. Show analytically that three altitudes of a triangle are concurrent.
7. Find the equation of tangent(s) to the circle $x^2 + y^2 = 25$ which is parallel to $3x + 4y + 1 = 0$.
8. Find centre, foci, eccentricity, vertices and equation of directrices of $25x^2 - 150x - 9y^2 + 72y + 306 = 0$.
9. According to Newton’s law of cooling, the rate at which a substance cools in air is proportional to the difference between the temperature of the substance and that of the air. If the temperature of the air is $300K$ and the substance cools from $370K$ to $340K$ in 15 minutes. By applying differential equations, find the time when the temperature will be $310K$.

OR

Solve the differential equation: $(2x + y + 1)dx + (2x + y - 1)dy = 0$

BOARD OF INTERMEDIATE EDUCATION, KARACHI**INTERMEDIATE EXAMINATION****MODEL PAPER-2025** (ACCORDING TO REDUCED SYLLABUS – 2025)**MATHEMATICS PAPER – II**

Max. Marks : 20

(Pre- Engineering & Humanities Groups – Regular & Private)

Time: 20 Minutes

SECTION 'A'**(MULTIPLE CHOICE QUESTIONS) – (M.C.Qs.)****(Marks : 20)****NOTE:**

- i) This section consists of 20 part questions and all are to be answered. Each part question carries one mark.
 ii) Do not copy the part questions in your answerscript. Write only the answer in full against the proper number of the question and its part.
 iii) All notations are used in their usual meanings. The use of Scientific Calculator is allowed.

1. Choose the correct answer for each from the given options:

i) To evaluate π to 5 digits, Maple command is:

* $> evalf(\text{Pi}, 5)$ * $> evalf(5, \text{Pi})$ * $> evalf(\text{Pi} * 5)$ * $> evalf(5\text{Pi})$

ii) What does the expression $> \text{subs}(z = 2 * x * y, z^2)$ yield in Maple?:

* $4x^2y^2$ * $2x^4y^2$ * $\frac{1}{2xy}$ * $8x^2y^2$

iii) The interval $(2, \infty) \cap (1, 3) =$:

* $[2, 3]$ * $(2, 3)$ * $[2, 3)$ * $(2, 3]$

iv) $\lim_{x \rightarrow 0} \frac{\sin x}{x}$:

* 0 * 1 * $\frac{180}{\pi}$ * $\frac{\pi}{180}$

v) If $y = \tan^{-1} \sqrt{x}$ then $\frac{dy}{dx} =$:

* $\frac{1}{2(\sqrt{x} + x\sqrt{x})}$ * $\frac{1}{1+x^2}$ * $\frac{1}{x + \sqrt{x}}$ * $\frac{1}{2(x + x\sqrt{x})}$

vi) Let f is the function with rule $f(x) = \ln 2x$ and $(x > 0)$, if g is inverse of f , then $g'(x) =$:

* $\frac{\ln x}{2}$ * $\frac{2}{\ln x}$ * $\frac{e^x}{2}$ * $\frac{2}{e^x}$

vii) The n th derivative of a^x is:

* $n(\ln a)^n a^x$ * $(\ln a)^n a^x$ * $na^x \ln a$ * $(\ln a)^x a^n$

viii) The slope of tangent to the curve $x^{\frac{2}{3}} + y^{\frac{2}{3}} = 2$ at $(1, 1)$:

* 0 * ± 1 * 1 * -1

ix) Differentiation w.r.t 't' of a vector function $\vec{f}(x) = (e^{2t} + 1)\hat{i} + \sin(2t)\hat{j} + t^3\hat{k}$ at $t = 0$ is:

* $2\hat{i} + 2\hat{j}$ * $2\hat{i} + 2\hat{j} + 3\hat{k}$ * $2\hat{j} + 3\hat{k}$ * $2\hat{i} + 3\hat{k}$

x) $\int \ln x \, dx$:

* $\frac{1}{x} + c$ * $x \ln x + x + c$ * $x \ln x - x + c$ * $x + c$

xi) $\int f^n(x) f'(x) dx$, where $n = -1$, is:

* $\frac{f^{n+1}(x)}{n+1} + c$ * $\ln(f^n(x)) + c$ * $\ln(f(x)) + c$ * $n(f^{n-1}(x)) + c$

xii) The point where three altitudes of the triangle meet is called:

* Centroid * Circumcentre * Incentre * Orthocentre

xiii) The equation of straight line which makes intercepts 5 and 7 on the axes respectively, is:

* $7x + 5y - 35 = 0$ * $7x + 5y - 1 = 0$ * $5x + 7y - 35 = 0$ * $5x + 7y - 1 = 0$

xiv) If the circle $x^2 + y^2 + 2gx + 2fy + c = 0$ touches y-axis then the radius is:

* $|f + g|$ * $|f|$ * $|g|$ * $|fg|$

Continued on next page.....

MATHEMATICS PAPER – II
(Pre- Engineering & Humanities Groups – Regular & Private)

- xv) If a line $lx + my + n = 0$ touches the circle $x^2 + y^2 = r^2$, then the condition of tangency is:
 * $n^2 = r^2(l^2 - m^2)$ * $n^2 = r^2(l^2 + m^2)$ * $n^2 = (l^2 - m^2)$ * $n^2 = (l^2 + m^2)$
- xvi) The axis of parabola is also called the axis of:
 * transverse * conjugate * rotation * symmetry
- xvii) The foci of the ellipse $9x^2 + 25y^2 = 225$ are:
 * $(\pm 4, 0)$ * $(0, \pm 4)$ * $(\pm 16, 0)$ * $(0, \pm 16)$
- xviii) The order and degree of the differential equation $\left(\frac{d^3y}{dx^3}\right)^2 + 3\left(\frac{d^2y}{dx^2}\right)^3 + \frac{dy}{dx} + y = x$ are:
 * **1,1** * **2,3** * **3,2** * **5,5**
- xix) The general solution of the differential equation $\frac{dy}{dx} = e^{x-y}$ is:
 * $e^{x-y} = c$ * $e^x - e^y = c$ * $e^{xy} = c$ * $e^x + e^{-y} = c$
- xx) Given that $f(x, y) = x \ln y$ then $\frac{f_x}{f_y} =$:
 * $\frac{\ln x}{y}$ * $\frac{\ln y}{x}$ * $\frac{x \ln x}{y}$ * $\frac{y \ln y}{x}$

-----XXXXXXXXXX-----

BOARD OF INTERMEDIATE EDUCATION, KARACHI

INTERMEDIATE EXAMINATION

MODEL PAPER-2025 (ACCORDING TO REDUCED SYLLABUS – 2025)

According to New Book

PHYSICS PAPER – I

(Science Group)

SECTION ‘B’

Max. Marks : 68

Time: 2 hours 40 Minutes

(SHORT-ANSWER QUESTIONS) (36 Marks)

NOTE: Answer any **Nine** part questions from this section. All part questions carry equal marks. Draw diagram where necessary. Use of scientific calculator is allowed.

2. i) Define escape velocity. Derive the expression for escape velocity.
- ii) State and explain Pascal’s law.
- iii) Define potential gradient $E = -\frac{\Delta v}{\Delta r}$. Show that electric intensity is equal to the negative of potential gradient.
- iv) What is conservative field? Prove that the gravitational field of earth is conservative field.
- v) State and explain Kirchhoff’s first and second laws.
- vi) Prove that following equations are dimensionally correct:
$$* \quad T = 2\pi \sqrt{\frac{L}{g}} \quad * \quad S = v_i t + \frac{1}{2} at^2$$
- vii) A turtle moves from the origin with the speed 10 cm/s in the direction of 25° to the horizontal.
a) Find the coordinates of a turtle 10 seconds later. b) How far did the turtle walk in 10 seconds?
- viii) A golf club exerts an average force of 800 N on a golf ball for 0.02 seconds. If the initial velocity of the ball is 40 m/s and its final velocity is 60 m/s , what is the impulse experienced by the ball?
- ix) The International Space Station orbits at an altitude of 400 km above the surface of the Earth. What is the orbital velocity of space station?
- x) Calculate the viscous drag on a drop of oil of 0.1 mm radius falling through air at its terminal velocity.
(viscosity of air = $1.8 \times 10^{-5}\text{ Pa-s}$; density of oil = 850 kg/m^3)
- xi) Three resistors 1Ω , 2Ω and 3Ω are connected in series. What is the total resistance of the combination? If the combination is connected to a battery of e.m.f. 24 V having negligible internal resistance, obtain the potential drop across each resistor.
- xii) The potential energy of a body at the top of a building is 200 Joules . When it is dropped, its kinetic energy just before striking the ground is 160 Joules , find the work done against the air resistance.
- xiii) A source of sound and a listener are moving towards each other with velocities 0.5 times and 0.2 times the speed of sound respectively. If the frequency of sound is 2000 Hz , calculate the percentage change in the frequency with respect to the listener.
- xiv) In a Newton’s ring experiment, the diameter of the 16^{th} bright ring is 0.653 cm and that of 5^{th} bright ring is 0.346 cm . If the radius of curvature of the lens is 10 cm , find the wavelength of light.

SECTION ‘C’

(DETAILED-ANSWER QUESTIONS) (32 Marks)

NOTE: Answer any **Two** questions from this section. All questions carry equal marks. Draw diagram where necessary.

3. a) Define ‘Position Vector’. Add vectors \vec{A}_1 and \vec{A}_2 making angle θ_1 and θ_2 with the horizontal by rectangular component method.
- b) State Bernoulli’s principle. Derive Bernoulli’s equation for steady, incompressible, non-viscous and irrotational flow of fluid.
4. a) What is the capacitance of a capacitor? Derive an expression for the capacitance of a parallel plate capacitor when:
i) air is present between the plates ii) some dielectric slab is placed between the plates
- b) What are the effects of pressure, density and temperature of air on the speed of sound? Derive Newton’s formula for speed of sound in air along with Laplace’s correction.
5. a) Define simple harmonic motion. For a particle in uniform circular motion, prove that its projection along one of the diameters executes simple harmonic motion.
- b) Describe Young’s double slit experiment and derive the expressions for positions of dark and bright fringes. Also derive expression for fringe spacing.

BOARD OF INTERMEDIATE EDUCATION, KARACHI

INTERMEDIATE EXAMINATION

MODEL PAPER-2025 (ACCORDING TO REDUCED SYLLABUS – 2025)

PHYSICS PAPER – I

(Science Group)

Max. Marks : 17

Time: 20 Minutes

According to New Book

SECTION ‘A’

(MULTIPLE CHOICE QUESTIONS) – (M.C.Qs.) (Marks : 17)

Note:

- i) This section consists of 17 part questions and all are to be answered. Each part question carries 1 mark.
- ii) Do not copy the part questions in your answerbook. Write only the answer in full against the proper number of the question and its part.
- iii) The use of scientific calculator is allowed. All notations are used in their usual meanings.

1. Select the correct answer for each from the given options:

- i) Unit of solid angle is:
* Second * Kilogram * Steradian * Candela
- ii) At the top of the trajectory of a projectile, the acceleration is:
* maximum * minimum * zero * g
- iii) If momentum is increased by 20% then K.E. increases by:
* 44% * 55% * 66% * 77%
- iv) A man, with his arms at his sides, is spinning on a light frictionless turntable, when he extends his arms:
* his angular velocity increases * his angular velocity remains same
* his rotational inertia decreases * his angular momentum remains the same
- v) The absolute potential energy of an object depends on:
* the object’s mass and height * the object’s mass and speed
* the object’s shape and size * the object’s colour and temperature
- vi) One piston in a hydraulic lift has an area that is twice the area of the other, when the pressure at the smaller piston is increased by Δp the pressure at the larger piston:
* increases by $2\Delta p$ * increases by Δp * increases by $\frac{\Delta p}{2}$ * increases by $4\Delta p$
- vii) A sky diver falls through the air at terminal velocity, the force of air resistance on him is:
* half his weight * equal to his weight
* twice his weight * zero
- viii) The force between two charges placed in air is F . If air is replaced by a medium of relative permittivity ϵ_r then force is reduced to:
* $F \epsilon_r$ * $\frac{F}{\epsilon_r}$ * ϵ_r / F * $\epsilon \epsilon_r$
- ix) Capacitor blocks:
* alternating current * direct current
* both alternating and direct currents * neither alternating nor direct currents
- x) A wire of uniform area of cross-section A, length L and resistance R is cut into two parts, the resistivity of each part:
* becomes zero * is halved * is doubled * remain same
- xi) A heat-sensitive device whose resistivity changes with the change in temperature is called:
* conductor * resistor * thermistor * thermometer
- xii) This variable has zero value at the extreme position in Simple Harmonic Motion:
* Acceleration * Speed * Displacement * Angular Frequency
- xiii) If a body oscillates at the angular frequency ω_d of the driving force, then the oscillations are called:
* forced oscillations * coupled oscillations
* free oscillations * maintained oscillations
- xiv) If v_a , v_h and v_m are the speeds of sound in air, hydrogen gas and a metal at the same temperature, then:
* $v_a > v_h > v_m$ * $v_m > v_h > v_a$ * $v_h > v_m > v_a$ * $v_h > v_a > v_m$
- xv) This electromagnetic wave can diffract from the gap of the order of $10^{-15} m$:
* microwave * ultraviolet wave * radio wave * infrared wave
- xvi) A hill separates a television (TV) transmitter from a house. The transmitter cannot be seen from the house but still the TV in the house has good reception, this wave phenomenon makes it possible:
* Coherence of waves * Diffraction of waves
* Interference of waves * Refraction of waves
- xvii) The process of superimposing signal frequency on the carrier wave is called:
* transmission * detection * reception * modulation

-----XXXXXXXXXX-----

BOARD OF INTERMEDIATE EDUCATION, KARACHI

INTERMEDIATE EXAMINATION

MODEL PAPER-2025 (ACCORDING TO REDUCED SYLLABUS – 2025)

PHYSICS PAPER – II

(Science Group)

Max. Marks : 68

Time: 2 hours 40 Minutes

According to New Book

SECTION 'B'

(SHORT-ANSWER QUESTIONS) (36 Marks)

NOTE: Answer any **Nine** part questions from this section. All questions carry equal marks. Draw diagrams where necessary. Use of scientific calculator is allowed. All notations are used in their usual meanings.

2. i) Describe the working of an AC generator.
- ii) What is the coefficient of performance (COP) of a refrigerator that operates with Carnot efficiency between temperatures $-3.00^{\circ}C$ and $+27^{\circ}C$?
- iii) What is the flux density at a distance of $0.1m$ in air from a long straight conductor carrying a current of $6.5A$? Calculate the force per meter on a similar parallel conductor at a distance of $0.1m$ from the first carrying a current of $3A$. ($\mu_0 = 4\pi \times 10^{-7} T.m.A^{-1}$):
- iv) A conductor of length $0.4m$ moves at a velocity of $5ms^{-1}$ perpendicular to a magnetic field of $0.3T$. Calculate the motional EMF induced in the conductor.
- v) In 9 days the number of radioactive nuclei decreases to one eighth present initially. What is half-life (in days) of the material?
- vi) Define the terms heat and temperature with different scales. Describe the triple point of water.
- vii) What are logic gates? Describe the binary operation of OR gate or AND gate for three inputs.
- viii) State first law of thermodynamics. Describe isothermal process.
- ix) A photon with a wavelength of $6.0 \times 10^{-12}m$ collides with an electron. After the collision, the photon wavelength is found to have been changed by exactly one Compton wavelength $2.43 \times 10^{-12}m$. What is the photon's wavelength after collision?
- x) Define valence band and conduction band, classify solids on the basis of energy bands.
- xi) Calculate the wavelength of X-rays, if the energy of one photon emitted by the X-ray machine is $1.9878 \times 10^{15} J$.
- xii) In an RL circuit, the resistance (R) is 30Ω and the inductance (L) is $0.2H$. Calculate the total impedance at a frequency of $60Hz$.
- xiii) At what speed is a particle moving if the mass is equal to three times of its rest mass?
- xiv) How much heat is required to raise the temperature of $1kg$ of lead from $25^{\circ}C$ to $100^{\circ}C$? (Specific heat of lead = $0.128 J/kg^{\circ}C$)

SECTION 'C'

(DETAILED-ANSWER QUESTIONS) (32 Marks)

NOTE: Answer any **Two** questions from this section. All questions carry equal marks. Draw diagrams where necessary.

3. a) State Ampere's law. Using Ampere's law derive the expression for the magnetic field of Induction inside a current carrying Solenoid or Toroid.
- b) What is Carnot Engine? Describe the Carnot cycle and also derive the expression for the efficiency of Carnot engine in terms of absolute temperature.
4. a) Define Self or Mutual Induction. Describe working of Transformer and derive relative expression.
- b) What is photoelectric effect? Define threshold frequency, stopping potential and work function. Derive Einstein's photoelectric equation.
5. a) On the basis of Kinetic Theory of Gases, show that pressure of a gas is proportional to the mean square velocity of molecules.
- b) Describe the terms optical pumping, metastable state, population inversion and stimulated emission. Write the construction and working of Helium-Neon Laser.

-----XXXXXXXXXX-----

According to New Book

SECTION 'A'

(MULTIPLE CHOICE QUESTIONS) – (M.C.Qs.) (Marks : 17)

- Note:**
- i) This section consists of 17 part questions and all are to be answered. Each part question carries 1 mark.
 - ii) Do not copy the part questions in your answerbook. Write only the answer in full against the proper number of the question and its part.
 - iii) The use of scientific calculator is allowed. All notation are used in their usual meanings.

1. Select the correct answer for each from the given options:

- i) If the temperature is kept constant and the volume of a gas is doubled, then pressure of a gas is:

* Reduced to $\frac{1}{2}$ of original value	* Doubled
* Reduced to $\frac{1}{4}$ of original value	* Quadrupled
- ii) In this thermodynamic process, a system exchange heat with its surroundings but undergoes no change in temperature:

* Isothermal	* Adiabatic	* Isobaric	* Isochoric
--------------	-------------	------------	-------------
- iii) When refrigerator has open door, the temperature of the room will:

* rise	* fall
* remains the same	* rise or fall depending on the area of the room
- iv) An electron moves parallel to a uniform magnetic field, the magnitude of the force experienced by the electron is:

* Maximum	* Minimum
* Zero	* Depends on the speed of electron
- v) Working principle of transformer is:

* Mutual Induction	* Self Induction	* Charge	* Energy
--------------------	------------------	----------	----------
- vi) In purely resistive AC circuit, the phase difference between current and voltage is:

* 0°	* 45°	* 90°	* 180°
-------------	--------------	--------------	---------------
- vii) For a metallic crystal, delocalized electrons occupy / or:

* conduction band	* valence band
* conduction and valence bands	* there are no delocalized electrons
- viii) For a full – wave rectifier the output frequency:

* Equals one-half the input frequency	* Equals the input frequency
* Equals two times the input frequency	* Equals three times the input frequency
- ix) In a 2-input OR gate, when both inputs are '1' than the output will be:

* 1	* 0	* undefined	* Both 1 and 0
-----	-----	-------------	----------------
- x) Objects cannot exceed the speed of light because:

* their mass becomes infinite	* their length becomes zero
* time slows down to zero	* they lose all energy
- xi) Compton scattering from electrons is most easily observed for:

* infrared light	* visible light	* ultraviolet light	* X-rays
------------------	-----------------	---------------------	----------
- xii) If radium has half-life of 5 years, the probability of decay in ten years is:

* 50%	* 75%	* 100%	* 60%
-------	-------	--------	-------
- xiii) In the equation ${}_{13}^{27}Al + {}_2^4He \longrightarrow {}_{15}^{30}P + X$, then correct symbol for X is:

* ${}_{0}^{-1}e$	* ${}_{1}^1H$	* ${}_{2}^4He$	* ${}_{0}^1n$
------------------	---------------	----------------	---------------
- xiv) This process violates the 2nd law of thermodynamics:

* Refrigerator cooling	* Heat engine working
* Gases mixing	* Heat flowing from cold body to hot body
- xv) One Henry is equal to:

* $Vs^{-1}A$	* VsA	* $Vs^{-1}A^{-1}$	* VsA^{-1}
--------------	---------	-------------------	--------------
- xvi) The term 'reactance' represents the:

* ohmic resistance only	* resistance to direct currents only
* capacitive and inductive opposition to current flow	* total impedance
- xvii) A free electron has a momentum of $5.0 \times 10^{-24} \text{ kgms}^{-1}$, its wavelength is:

* $1.3 \times 10^{-8} \text{ m}$	* $1.3 \times 10^{-10} \text{ m}$	* $2.1 \times 10^{-11} \text{ m}$	* $2.1 \times 10^{-13} \text{ m}$
----------------------------------	-----------------------------------	-----------------------------------	-----------------------------------

-----XXXXXXXXXX-----

BOARD OF INTERMEDIATE EDUCATION, KARACHI

INTERMEDIATE EXAMINATION

MODEL PAPER-2025 (ACCORDING TO REDUCED SYLLABUS – 2025)

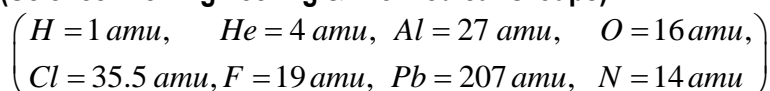
CHEMISTRY PAPER – I

Max. Marks: 68

(Science Pre-Engineering & Pre-Medical Groups)

Time: 2 hours 40 minutes

Atomic Masses:



According to New Book

SECTION 'B' (SHORT-ANSWER QUESTIONS)

Marks : 36

Note: Answer any **Nine** part questions. All part questions carry equal marks.

2. i) Define the following:
- * Stoichiometry
 - * Sublimation
 - * Bond energy
 - * Dipole moment
- ii) Hydrogen gas is commercially prepared by steam methane process
- $$CH_4 + H_2O \longrightarrow CO + 3H_2$$
- If the mixture of 28.8g methane & 14.4 g steam is heated in furnace at elevated temp to liberate carbon monoxide & hydrogen gas. Determine the Limiting reactant & the mass of hydrogen gas produced.
- OR**
- NH_4NO_3 on heating decomposes to produce nitrous oxide & water
- $$NH_4NO_3 \longrightarrow N_2O + 2H_2O$$
- If 200gm of NH_4NO_3 is completely consumed in the reaction. Calculate Mass of H_2O formed and the Volume of N_2O gas liberated at S.T.P.
- iii) What is meant by diffusion and effusion? Explain Graham's law of diffusion.
- iv) State the main postulates of K.M.T of gases.
- v) A 12.5 dm³ vessel contain 4 g CH₄, 1.8g N₂ and 10 g Xe. What is the pressure in the vessel at 0 °C.
- vi) Write the electronic configuration of:
- * Al⁺³ (Z=13)
 - * Br (Z=35)
 - * Cu (Z=29)
 - * O⁻² (Z=8)
- vii) State le chatlier principle. In Haber process.
- $$N_2 + 3H_2 \rightleftharpoons 2NH_3 \quad (\Delta H = -ve)$$
- Discuss the effect of increase in concentration, temperature and pressure.
- viii) Give any four reason of the following:
- * Evaporation is the cooling process.
 - * The bond length of H-Cl is shorter than Cl-Cl.
 - * Oil is insoluble in water but soluble in Hexane.
 - * Why p-p sigma bond is stronger than s-s and s-p.
 - * The Dipole moment of water is 1.85D but CO₂ has zero dipole moment.
- ix) What are X-ray? Explain the origin of X-ray and describe the relationship between their wavelength and nuclear charge from which they originate.
- x) Define hydrogen bonding and co relate the following properties of water with hydrogen bonding among its molecule.
- * High boiling point
 - * High density
- xi) For a reaction:
- $$A + B \longrightarrow C$$
- The initial concentration of A & B were found to be 0.43M and 0.78M respectively, while the initial rate was 3.8x10⁻³ MS⁻¹. Determine the rate constant.
- xii) What is lattice energy? How it is effected by:
- * Size of ions
 - * Charge of ions
- xiii) Explain Lewis concept of acid and base through the example of NH₃ and AlCl₃.
- xiv) Differentiate any two of the following:
- * Line spectrum and continuous spectrum
 - * Natural radio activity and artificial radio activity
 - * VBT and MOT

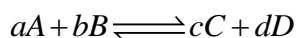
SECTION 'C'

(DETAILED-ANSWER QUESTIONS)

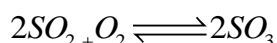
Marks : 32

Note: Answer any **Two** questions from this section. All questions carry equal marks.

3. a) State law of mass action. Illustrate this law mathematically for the reversible reaction given below:



In oxidation of SO₂ to SO₃ in manufacturing of sulphuric acid. Calculate the Kc for the reaction



When at equilibrium SO₂ = 5moles, O₂ = 4moles and SO₃ = 2.8mole are present in a 2 dm³ container.

- b) Enlist the factors that influence rate of reaction. Explain any three of them.

Continued on page 2

4. a) Derive an expression for the frequency of radiation emitted from an electron. Given that:

$$E = \frac{-me^4}{8 \epsilon_0^2 h^2 n^2} \quad (R_H = 1.09678 \times 10^7 \text{ m}^{-1})$$

A photon of wave number $23 \times 10^5 \text{ m}^{-1}$ is emitted when electron undergoes a transition from a higher energy orbits to $n=2$. Determine the orbit from which electron fall & also the spectral line appears in this transition of electrons.

- b) Write short notes on any two of the following:
 * Viscosity * Surface tension * Buffer solution

5. a) Why real gases deviate from ideal behavior? Derive Van Der Waal's equation for the correction of volume and pressure.

- b) What is hybridization? Explain the hybridization in each of the following:
 * CH_4 * $BeCl_2$ * BF_3

OR

Write down the postulates of VSEPR theory. Explain the molecular structure of BF_3 and NH_3 on the basis VSEPR theory.

-----XXXXXXXXXX-----

BOARD OF INTERMEDIATE EDUCATION, KARACHI

INTERMEDIATE EXAMINATION

MODEL PAPER-2025 (ACCORDING TO REDUCED SYLLABUS – 2025)

CHEMISTRY PAPER – I

Max. Marks: 17

(Science Pre-Engineering & Pre-Medical Groups)

Time: 20 minutes

According to New Book

SECTION 'A'

(MULTIPLE CHOICE QUESTIONS) – (M.C.Qs.)

(Marks : 17)

NOTE:

- This section consists of 17 part questions and all are to be answered. Each question carries one mark.
- Do not copy the part questions in your answerbook. Write only the answer in full against the proper number of the question and its part.
- The use of scientific calculator is allowed

1. Choose the correct answer for each from the given options:

- Generally actual yield is:
* greater than theoretical yield * less than theoretical yield
* equal to the theoretical yield * sometimes greater than and sometimes less than theoretical yield
- Maximum number of molecules present in the following sample of gas:
* 100g O₂ * 100g CH₄ * 100g CO₂ * 100g Cl₂
- This crystal system has all sides equal and all angles equal to 90°:
* Triclinic * Monoclinic * Cubic * Hexagonal
- This contains the same no. of atoms as 12g of Mg:
* 12g C * 20 g Ca * 24 g C * 12 g Na
- The temperature at which two allotropic forms coexist in equilibrium is:
* Fusion temperature * Melting point
* Critical temperature * Transition temperature
- The volume occupied by 3.01×10^{23} molecules of NH₃ at STP is:
* 22.4 dm³ * 5.6 dm³ * 11.2 dm³ * 5.4 dm³
- This is not isoelectronic pair:
* Na⁺ & Ne * Na⁺ & F⁻ * Na & Ca * Na⁺ & Mg⁺²
- Which rule or the principle is violated, in the given electronic configuration:
 ${}_8\text{O} = 1s^2, 2s^2 2p_x^2 2p_y^2 2p_z^0$
* Pauli's Exclusion Principle * (n+1) Rule
* Aufbau Principal * Hund's Rule
- Which quantum number describes the shape of a orbital:
* Principle quantum number * Azimuthal quantum number
* Spin quantum number * Magnetic quantum number
- This possesses weakest London dispersion forces:
* Cl₂ * F₂ * Br₂ * I₂
- Quantum no values for 3s orbital are:
* n=0, l=1 * n=1, l=0 * n=3, l=1 * n=3, l=0
- A colloidal solution of liquid into liquid is known as:
* Gel * Foam * Aerosol * Emulsion
- Liquids can form convex meniscus in a narrow glass tube when:
* Cohesive forces are stronger than adhesive * Adhesive forces are stronger than cohesive
* Cohesive forces and adhesive are equal in strength * No hydrogen bonding is there
- Line spectrum serves as the finger print for the identification of:
* Electron * Atom * Element * Proton
- Hydrogen bond is not found in:
* H₂O * NH₃ * CH₄ * HF
- The diffusion rate of C₃H₈ & CO₂ are same because:
* Both are polyatomic gases * Both are denser than air
* Both have same molecular Mass * Both contain C atom
- According to Raoult's Law, the relative lowering of vapor pressure depends on:
* Mole fraction of solvent * Molarity
* Mole fraction of solute * Molality

-----XXXXXXXXXX-----

BOARD OF INTERMEDIATE EDUCATION, KARACHI**INTERMEDIATE EXAMINATION****MODEL PAPER-2025** (ACCORDING TO REDUCED SYLLABUS – 2025)**CHEMISTRY PAPER – II**
(Science Pre-Engineering & Pre-Medical Groups)Max. Marks: 68
Time: 2 Hours 40 minutes

According to New Book

SECTION 'B'
(SHORT-ANSWER QUESTIONS) Marks : 36

Note: Answer any **Nine** part questions. Select **Four** part questions from **Inorganic – General Chemistry** and **Five** part questions from **Organic Chemistry**. All part questions carry equal marks.

INORGANIC – GENERAL CHEMISTRY

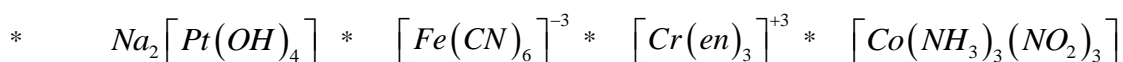
2. i) What is flame test? Why alkali and alkaline earth metals give coloured flame? Mention the colour of flame of any two alkali metals.

OR

Give reasons for the following:

- * H_2SO_4 behave as oxidizing agent.
- * Gallium has smaller atomic radii than aluminium.
- * Acidity of hydrogen halides increases from HF to HI .
- * Binding energy of zinc is least in 3d series.

- ii) Write the IUPAC name of the following:



- iii) Why the compounds of d – block elements coloured? Explain in term of crystal field theory.
- iv) Describe how 99.99% pure copper is obtained from copper matte.
- v) Describe the preparation and uses of Nylon and Polyvinyl chloride.
- vi) What are greenhouse gases? Explain greenhouse effect.
- vii) Define the following:

* Catalytic Converter * Chelates * Diagonal Relationship * Antipyretic Medicine

OR

Write at least one significant use of following metals:

* Sodium * Calcium * Iron * Copper

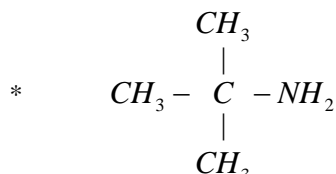
ORGANIC CHEMISTRY

- viii) Define any four of the following:
- * Reforming of Petroleum * Catenation * Functional Group
 - * Homologous Series * Peptide Bond

OR

Define Bucky Ball? Explain its structure (diagram is not required). Write its two properties and two uses.

- ix) Write the IUPAC names of any four of the following:



- x) Give the mechanism of free radical reaction between methane and chlorine in the presence of sunlight.

OR

Define Chiral Carbon and Plane Polarized Light. Explain optical isomers with example.

- xi) a) Why terminal alkynes are acidic in nature? Write one chemical reaction to support your answer.
- b) Why does the $-NO_2$ group attached to a benzene ring direct incoming electrophiles to the meta position in electrophilic substitution reactions of benzene? Explain briefly.

Continued on the next page.....

--:2:--

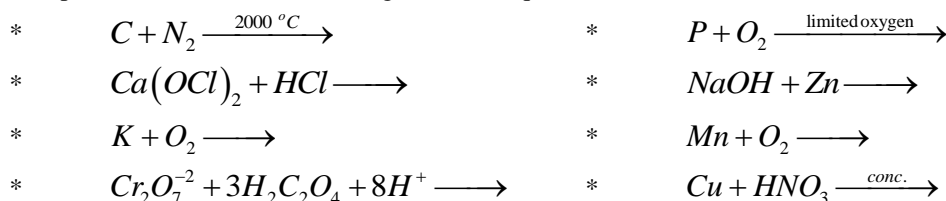
- xii) Identify each of the following with one laboratory test:
 * Alkene * Alcohol * Phenol * Aldehyde
- xiii) Write the names of four derivatives of Carboxylic acid and give the equation for their preparation from acetic acid..
- xiv) Define amines. Why they are basic in nature? Write the chemical equations for the preparation of the following compounds from an amine ($R-NH_2$):
 * Amide * Diazonium Salt
- OR**
- Write the names of two organometallic compounds (except Grignard reagent). Write the reactions of Grignard with the following:
 * Amine * Carbon dioxide

SECTION 'C'**(DETAILED-ANSWER QUESTIONS) Marks : 32**

Note: Answer any **Two** questions — **One** question from **Inorganic – General Chemistry** and **One** from **Organic Chemistry**. Both questions carry equal marks.

INORGANIC – GENERAL CHEMISTRY

3. a) Complete and balance the following chemical equations:

**OR**

Discuss the group trend of Atomic radii, ionization energy, electrical conductivity, melting and boiling point of Alkali metal

- b) Draw a flow sheet diagram of contact process and describe various steps involved in the manufacturing of sulfuric acid. also write two chemical reactions in which sulfuric acid behave as dehydrating agent.
4. a) What is Troposphere? Describe the chemistry involves due to the presence of oxides of nitrogen and carbon in troposphere.
- b) Define d – block elements. Why are d – block elements called transition elements? Explain trend of following properties of 3d – series of transition elements. (any three):
 * Catalytic activity * Alloy Formation * Variable oxidation state * Magnetic Behavior

ORGANIC CHEMISTRY

5. a) Explain the structure of benzene according to molecular orbital treatment. Also write two chemical reactions in which behave as unsaturated hydrocarbon.
- b) Outline the structures of each of the following molecules: (any eight)
 * Divinylacetylene * Neobutyl butyrate * Neocaproic acid
 * p – Cresol * 3 - Chlorobenzamide * 1,2,3 – benzenetriol
 * Hexamethylenediamine * α – chloroisovaleraldehyde * Methandiol
6. a) What are Nucleophilic substitution reactions. Compare in detail SN^1 and SN^2 reactions with mechanism.
- b) What are carbohydrates? Classify on the basis of structure. Explain the role of the following carbohydrates in health and disease:
 * Fructose * Glucose

OR

Write the chemical equations of the following: (any eight)

- * Reaction of ethyne with ozone.
- * Reaction of bromoethane with alcoholic solution of KOH .
- * Reaction of ethanal with reducing agent like $LiAlH_4$.
- * Reaction of propanal with mixture of zinc amalgam and concentrated HCl .
- * Oxidation of phenol with $K_2Cr_2O_7$ in presence of H_2SO_4 .
- * Ethanol reacts with thionylchloride in presence of pyridine.
- * Reaction of bromoethane with KSH .
- * Reaction of ethyleneglycol with periodic acid (HIO_4) .
- * Reaction of benzene with acetyl chloride in the presence of Lewis acid ($AlCl_3$)

-----XXXXXXXXXX-----

BOARD OF INTERMEDIATE EDUCATION, KARACHI

INTERMEDIATE EXAMINATION

MODEL PAPER-2025 (ACCORDING TO REDUCED SYLLABUS – 2025)

CHEMISTRY PAPER – II

(Science Pre-Engineering & Pre-Medical Groups)

Max. Marks: 17

Time: 20 minutes

According to New Book

SECTION 'A'

(MULTIPLE CHOICE QUESTIONS) – (M.C.Qs.) (Marks : 17)

NOTE:

- This section consists of 17 part questions and all are to be answered. Each part question carries one mark.
- Do not copy the part questions in your answerbook. Write only the answer in full against the proper number of the question and its part.
- The use of scientific calculator is allowed

1. Choose the correct answer for each from the given options:

- In III A group of periodic table, the ionization of gallium (Ga) is higher than aluminium (Al) due to insufficient shielding of the nuclear charge in gallium (Ga) by:
* 4s electrons * 4p electrons * 3d electrons * 3p electrons
- This metal is essential for growth of bones and teeth:
* Calcium * Magnesium * Sodium * Potassium
- The boiling point and viscosity of H_2SO_4 is high because:
* it is strong oxidizing agent * it is highly volatile
* it has strong hydrogen bonding * it form stable sulfur-oxygen bonds
- The coordination number of 'Pt' in $[Pt(en)_3]Cl_4$ is:
* 3 * 4 * 6 * +4
- This metal has maximum number of unpaired electrons in 3d orbitals:
* Copper (Cu) * Manganese (Mn) * Cobalt (Co) * Iron (Fe)
- The general formula of the homologous series of cyclo alkane is:
* C_nH_{2n} * C_nH_{2n+2} * C_nH_{2n-2} * C_nH_{2n+4}
- The final product obtained when hydrogen bromide (HBr) is added to an ethyne molecule:
* 1,2 – Dibromo ethane * Bromoethene
* 1,1 – Dibromo ethane * 1,1,2,2 – Tetrabromo ethane
- The sooty flame observed when benzene burns is due to:
* high percentage of carbon atoms * low molecular weight
* high percentage of hydrogen atoms * high density of benzene
- The carbonyl carbon of aldehyde is:
* sp hybridized * sp^2 hybridized * sp^3 hybridized * dsp^3 hybridized
- Lucas reagent is a mixture of:
* Zn and Hg * $ZnCl_2$ and HCl * Na and Hg * CaO and NaOH
- When a Grignard reagent reacts with Ketone it produces:
* primary alcohol * secondary alcohol * tertiary alcohol * Ester
- An example of transport protein is:
* Albumin * Haemoglobin * Lipase * Casein
- This compound among the following is known as oxime:
* $R-CH=N-NH_2$ * $R-\overset{O}{\parallel}C=NH_2$ * $R-CH=N-OH$ * $R-\overset{OH}{\underset{CN}{|}}{C}-H$
- Antimalarial drug among the following is:
* Ibuprofen * Chloroquine * Paracetamol * Diphenyl hydramine
- Ozone is destroyed by:
* Sulphurdioxide (SO_2) * Carbon dioxide (CO_2)
* Chlorofluorocarbon (CFCs) * Hydroflorocarbons (HFCs)
- The IUPAC name for formic acid is:
* Acetic acid * Methanoic acid * Ethanoic acid * Benzoic acid
- The pH of acid rain is:
* Between 7 to 8 * Between 6 to 7 * Below 5 * above 8

-----XXXXXXXXXX-----

BOARD OF INTERMEDIATE EDUCATION, KARACHI

INTERMEDIATE EXAMINATION

MODEL PAPER-2025 (ACCORDING TO REDUCED SYLLABUS – 2025)

BIOLOGY PAPER – I

BOTANY (THEORY) **(Science Pre-Medical Group)**

Max. Marks: 36

Time: 1 hour 45 minutes

According to New Book

SECTION 'B' **(SHORT-ANSWER QUESTIONS)**

Marks: 18

2. Answer any **Nine** part questions. All part questions carry equal marks.

- i) Why insectivorous plants use insects as food?
- ii) Describe the classification of bacteria on the basis of their shapes?
- iii) Why osmotic adjustment is beneficial for plants?
- iv) What do you mean by positive and negative sense virus?
- v) Draw a well labelled diagram any one of the followings:
* Bacteriophage virus * Mitochondrial structure.
- vi) Explain the bacterial diseases in plants with their signs, symptoms, treatment and prevention?
- vii) What are the four important events in light dependent reaction? **OR** What do you mean by bacterial growth?
Describe its phases.
- viii) Differentiate lytic and lysogenic life cycle of bacteriophage.
- ix) Why ATP is called common energy currency of living system?
- x) Why CAM plant close stomata close in day time?
- xi) Write short note on any two of the following:
* Nucleous * Cytoskeleton * Plastids
- xii) Describe the role of Plasma membrane in regulating cells interaction with its environment.
- xiii) Describe the major role and deficiency symptoms of any two of the following:
* Nitrogen * Potassium * Phosphorus
- xiv) Write causative agents, symptoms and transmission of the following:
* Hepatitis * Herpes * Poliomyelitis * Cotton leaf curl leaf

SECTION 'C'

(DETAILED-ANSWER QUESTIONS)

Marks: 18

Note: Answer any **Two** questions from this section. All questions carry equal marks.

3. Describe Oxidation of pyruvic acid and Kreb's cycle in detail.

OR

Light independent reaction (C3 cycle) of photosynthesis in detail.

4. Explain the chemical composition, structure and function of Plasma membrane.

5. Describe structure of Bacterium with diagram.

6. Discuss categorization of plants based on osmotic adjustment.

-----XXXXXXXXXX-----

BOARD OF INTERMEDIATE EDUCATION, KARACHI

INTERMEDIATE EXAMINATION

MODEL PAPER-2025 (ACCORDING TO REDUCED SYLLABUS – 2025)

BIOLOGY PAPER – I

BOTANY (THEORY)

(Science Pre-Medical Group)

Max. Marks: 09

Time: 15 minutes

According to New Book

SECTION 'A'

(MULTIPLE CHOICE QUESTIONS) – (M.C.Qs.) (Marks : 09)

- NOTE:** i) This section consists of 18 part questions and all are to be answered. Each part question carries ½ mark.
ii) Do not copy the part questions in your answerbook. Write only the answer in full against the proper number of the question and its part.

1. Choose the correct answer for each from the given options:

- i) Large numbers of ribosomes are present in cells that specialized in producing which of the following molecules:
* Lipids * Starch * Protein * Steroids
- ii) Cell organelle mainly concerned with the detoxification of alcohol:
* Chloroplast * Peroxisomes * Central vacuole * Mitochondria
- iii) The linear flow of electrons from water to NADP⁺ coupled to ATP synthesis is:
* Cyclic Photophosphorylation * Non- Cyclic Photophosphorylation
* Chemiosmotic phosphorylation * Oxidative phosphorylation
- iv) Chlorophyll is organized along with other molecules into photosystem, which has light gathering:
* Reaction Center * Carotenoid Compounds
* Antenna Complex * Cytochrome
- v) How many ATP molecule are forms during substrate level phosphorylation in kreb's cycle when one glucose in consumed?:
* One * Two * Three * Four
- vi) When viral RNA make new DNA, this process is called:
* Reverse Transcription * Negative Transcription
* Transcription * Replication
- vii) Virus that severely damage motor neurons and causes paralysis called:
* HIV * Dengue * Polio * Herpes
- viii) Aedes mosquito is the vector of:
* Arbo-viruses * Viroids * Rhabdo-virus * Rhino-virus
- ix) Bacteria show several types of movement such as flexing, spinning, free swimming and creeping are called:
* Bacillus * Spirocheates * Vibrio * coccus
- x) One of the first chemical to be used for disinfection:
* Phenol * Heavy metals * Halogens * Aldehydes
- xi) Gram positive bacterial peptidoglycan layer is:
* Thick * Moderate * Thin * No
- xii) Active transport of sucrose into sieve element a step commonly called:
* Phloem loading * Unloading * Diffusion * Osmosis
- xiii) In which mineral deficient soil carnivorous plant typically live:
* Nitrogen * Calcium * Magnesium * Potassium
- xiv) The capacity of living system to lose water is:
* Osmotic pressure * Water potential * Osmosis * Diffusion
- xv) The production of lateral appendages depends on the activity of:
* Lateral meristem * Intercalary meristem
* Apical meristem * Floral bud
- xvi) Tay-Sachs disease is a human genetic abnormality in cells accumulating and becoming clogged with very large and complex lipids. Which cellular organelle must be involved in this condition?:
* Endoplasmic reticulum * Golgi complex
* Lysosome * Mitochondria
- xvii) Enzymes involves during carboxylation:
* Rubisco oxygenase * Rubisco carboxylase
* Rubisco dehydrogenase * no enzyme involve in carboxylation
- xviii) The upward movement of water from roots to leaves against the gravity is called:
* Secondary Growth * Ascent of Sap
* Transpiration * Translocation

-----XXXXXXXX-----

BOARD OF INTERMEDIATE EDUCATION, KARACHI

INTERMEDIATE EXAMINATION

MODEL PAPER-2025 (ACCORDING TO REDUCED SYLLABUS – 2025)

Max. Marks: 32

BIOLOGY PAPER – II **BOTANY (THEORY)** (Science Pre-Medical Group)

Max. Marks: 32
Time: 1 hour 45 minutes

According to New Book

SECTION ‘B’ **(SHORT-ANSWER QUESTIONS)**

Marks: 16

2. Answer any **Eight** part questions. Each part question carries equal marks.
- Why DNA is negatively charged molecule?
 - What are introns? Are they involve in translation?
OR
Why mutation is always harmful?
 - What are the three steps of RNA splicing?
 - Define any two of the following:
* Karyotype * Test cross * Crossing over * Erythroblastosis foetilis.
 - Differentiate between Co-dominance and In-complete dominance.
 - A male has co-dominant blood group marry with female homozygous A, find out the possible blood groups of their offspring?
OR
Which blood group is universal donor and why?
 - Differentiate between the Convergent and Divergent evolution.
 - Why endosymbiotic theory seems more powerful in dealing with the evolution of eukaryotes?
 - Describe any one evidence in favour of evolution.
 - Differentiate between Nitrification and De-nitrification.
 - Write short note on any one of the following:
* Characteristics of nutrients reservoirs * Gross primary productivity and Net primary productivity
 - Why AmpR and LacZ are used in construction of rDNA?
 - What do you mean by palindromic sequences?
 - Enlist enzymes used in rDNA technology.

SECTION ‘C’ **(DETAILED-ANSWER QUESTIONS)**

Marks: 16

Note: Answer any **Two** questions from this section. All questions carry equal marks.

- What is biogeochemical cycle? Explain nitrogen cycle in detail.
OR
What is succession? Describe different stages of secondary succession in hydrarch or xerarch.
- Write the evidences about DNA as a hereditary material.
- Describe the law of segregation with example.
- Describe gene amplification through polymerase Chain Reaction (PCR) with its applications.

-----XXXXXXXXXX-----

BOARD OF INTERMEDIATE EDUCATION, KARACHI

INTERMEDIATE EXAMINATION

MODEL PAPER-2025 (ACCORDING TO REDUCED SYLLABUS – 2025)

BIOLOGY PAPER – II

BOTANY (THEORY)

(Science Pre-Medical Group)

Max. Marks: 08

Time: 15 minutes

According to New Book

SECTION 'A'

(MULTIPLE CHOICE QUESTIONS) – (M.C.Qs.)

(Marks: 08)

- NOTE:**
- This section consists of 16 part questions and all are to be answered. Each part question carries ½ mark.
 - Do not copy the part questions in your answerbook. Write only the answer in full against the proper number of the question and its part.

1. Choose the correct answer for each from the given options:

- According to replication model, the parental double helix remain intact and conserved called:
* Semi conservative * Conservative * Disposed * Eukaryotic replication
- The complex of histone octamer and two loops of duplex DNA is:
* Chromomere * Chromatin * Nucleosome * Heterochromatin
- A Protein which prevents the re-binding of complementary strand during replication at fork is:
* DNA helicase * Ligase * SSB * Primase
- The allele holandric gene is located at?:
* X chromosome * Y chromosome
* both X and Y chromosome * Autosomes
- The process of exchange of chromosomal segment between non-sister chromatids of homologous chromosome is called:
* Linkage * Crossing over * Epistasis * Nucleosome
- Labrador is a type of dog, its coat colour is an excellent example of:
* Synapsis * Epistasis
* Homologous chromosome * Polygenic Inheritance
- The ratio of dominant epistasis is:
* 12:3:1 * 15:1 * 9:3:4 * 9:7
- The pioneers in xerarch succession are the:
* Foliose lichens * Mosses * Crustose lichens * Shrubs
- This was supporting the theory of special creation:
* George Buffon * Lamarck * Darwin * Suarez
- Philosophie Zoologique was written by:
* Wallace * Darwin * Weismann * Lamarck
- The main cause of the increase in the amount of CO₂ in the earth's atmosphere is:
* Rapidly growing human population * Burning of a large number of fossil fuels
* Increase in the number of industries * Decrease in forest resources
- The water cycle begin with the process of:
* Transpiration * Evaporation * Decomposition * Combustion
- Polymerase chain reaction (PCR) is a technique used to amplify DNA What is the significance of PCR?:
* To sequence DNA * To identify genetic disorders
* To study gene expression * To study the transcription
- The significance of monoclonal antibodies in biotechnology is:
* To study gene expression * Used to diagnose diseases
* Genetically modified organisms * They can be used to create drugs
- Adrenoleukodystrophy (ALD) is a genetic disorder that affect the:
* Nervous system * Urinary system
* Circulatory system * Digestive system
- This cycle is not a gaseous type of cycle:
* Carbon cycle * Nitrogen cycle * Phosphorus cycle * Oxygen cycle

-----XXXXXXXXXX-----

BOARD OF INTERMEDIATE EDUCATION, KARACHI
INTERMEDIATE EXAMINATION
MODEL PAPER-2025 (ACCORDING TO REDUCED SYLLABUS – 2025)
BIOLOGY PAPER – I
ZOOLOGY (THEORY)
(Science Pre-Medical Group)

Max. Marks: 32

Time: 1 hour 40 minutes

According to New Book

SECTION 'B'
(SHORT-ANSWER QUESTIONS) Marks: 16

Note: Answer any **Eight** part questions in all. Select four **Reasoning Questions** and four **Non-Reasoning Questions**. All part questions carry equal marks.

2. a) **Reasoning Questions:**

- i) Why do fats provide more energy than carbohydrates?
- ii) Why enzymes are called temperature-sensitive?
- iii) Why flatworms are named so?
- iv) Why does blood flow faster in arteries?
- v) Why hair and mucus glands are present in the nostrils and trachea?
- vi) Why water is amphoteric and buffer?
- vii) How do precapillary sphincters regulate blood flow through capillaries?
- viii) Why are echinoderms placed in Bilateria when their adults are radially symmetrical?

b) **Non-Reasoning Questions:**

- ix) Differentiate between cartilaginous and bony fishes.
- x) Enlist the types of proteins with their functions.
- xi) Write a note on "LUB" and "DUB" heart sounds.
- xii) Mention the economic importance of Cnidaria or Mollusca.
- xiii) Differentiate between activators and inhibitors.
- xiv) Write a note on inflammation.
- xv) Mention the role of respiratory pigments.
- xvi) Define Protostomes and Deuterostomes with examples.

SECTION 'C'
(DETAILED-ANSWER QUESTIONS) Marks: 16

Note: Answer any **Two** questions from this section. All questions carry equal marks.

3. Write the salient features, evolutionary adaptations, and economic importance of Phylum Cnidaria.

OR

Define carbohydrates. Classify carbohydrates and compare monosaccharides, disaccharides, and polysaccharides.

4. What is an autoimmune disorder? Explain the role of T-cells and B-cells in transplant rejection.

5. Describe the internal structure and functions of the human heart with a labeled diagram.

OR

Explain the respiratory system of humans. Draw a neat and labeled diagram of respiratory system of man.

-----XXXXXXXX-----

BOARD OF INTERMEDIATE EDUCATION, KARACHI

INTERMEDIATE EXAMINATION

MODEL PAPER-2025 (ACCORDING TO REDUCED SYLLABUS – 2025)

BIOLOGY PAPER – I

ZOOLOGY (THEORY)

(Science Pre-Medical Group)

Max. Marks: 08

Time: 20 minutes

According to New Book

SECTION ‘A’

(MULTIPLE CHOICE QUESTIONS) – (M.C.Qs.)

Marks : 08

NOTE:

- i) This section consists of 16 part questions and all are to be answered. Each part question carries ½ mark.
ii) Do not copy the part questions in your answerbook. Write only the answer in full against the proper number of the question and its part.

1. Choose the correct answer for each from the given options:

- i) A large and important lipid made up of isoprenoid units is called:
* Phospholipid * Terpenoids * Waxes * Acylglycerol
- ii) The active site of an enzyme is the region that:
* Binds allosteric regulators of the enzyme. * Is involved in the catalytic reaction of the enzyme.
* Binds the products of the catalytic reaction. * Is inhibited by the presence of a coenzyme.
- iii) The structural material (spicules) of sponges is manufactured by:
* Pinacocytes * Choanocytes * Amoebocytes * Porocytes
- iv) This acts as physical barrier:
* Macrophage * Mucous membranes
* HCl * Saliva
- v) This given organ functions as an air conditioner:
* Pharynx * Larynx * Nasal chambers * Trachea
- vi) The covalent bond between two monosaccharides is a:
* Peptide bond * Ester bond
* Phosphodiester bond * Glycosidic bond
- vii) An animal with a false body cavity is a:
* Acoelomate * Coelomate * Protostome * Pseudocoelomate
- viii) The exchange of gases between the external environment and the lungs is called:
* Respiration * External respiration
* Cellular respiration * Anaerobic respiration
- ix) Balanoglossus is an example of:
* Urochordata * Cephalochordates * Hemichordata * Protochordata
- x) This event initiates blood clotting:
* Contact with an irregular surface by platelets and other factors in plasma.
* Production of the enzyme thrombin.
* Conversion of fibrinogen into fibrin.
* Excessive blood flow through a capillary.
- xi) The non-protein part of an enzyme is called:
* Coenzyme * Cofactor * Apoenzyme * Holoenzyme
- xii) This structure has the lowest blood pressure?:
* Aorta * Capillary * Vena cava * Arteriole
- xiii) The transfer of immunity from a mother to her foetus is called:
* Natural active immunity * Natural passive immunity
* Artificial active immunity * Artificial passive immunity
- xiv) A trihydroxy alcohol made up of three carbon atoms is called:
* Glucose * Glycerol * Maltose * Ribose
- xv) An adult animal that possesses bilateral symmetry is most certainly also:
* A protostome * A deuterostome * Triploblastic * Coelomate
- xvi) Antibodies are produced by:
* T cells * B cells * Plasma cells * Macrophages

-----XXXXXXXX-----

BOARD OF INTERMEDIATE EDUCATION, KARACHI
INTERMEDIATE EXAMINATION
MODEL PAPER-2025 (ACCORDING TO REDUCED SYLLABUS – 2025)

Max. Marks: 36

BIOLOGY PAPER – II
ZOOLOGY (THEORY)
(Science Pre-Medical Group)

Time: 1 hour 40 minutes

According to New Book

SECTION 'B'
(SHORT-ANSWER QUESTIONS) Marks: 18

Note: Attempt any **Nine** part questions in all. Select five **Reasoning Questions** and four **Non-Reasoning Questions**. All part questions carry equal marks.

2. a) **Reasoning Questions:**

- i) Why is the hormonal system of females more complex than that of males?
- ii) Why do animals excrete different types of waste products?
- iii) Why do skeletal muscles experience fatigue after intense exercise?
- iv) Why does the inner uterine wall thicken during the secretory phase?
- v) Why do we shiver in cold conditions?
- vi) Why is calcium essential for cross-bridge formation in muscles?
- vii) Why interneurons are called association neurons?
- viii) Why is the posterior pituitary gland referred to as the neurohypophysis?

b) **Non-Reasoning Questions:**

- ix) Mention the causes and remedies for kidney stones.
- x) Define AIDS and discuss its global impact.
- xi) Explain the role of cartilage in the skeletal system.
- xii) List the hormones secreted by the anterior pituitary gland.
- xiii) Differentiate between the parasympathetic and sympathetic nervous systems.
- xiv) Define hypothermia and describe the body's physiological responses to counter it.
- xv) Differentiate between tetany and tetanus.

SECTION 'C'
(DETAILED-ANSWER QUESTIONS) Marks: 18

Note: Answer any **Two** questions from this section. All questions carry equal marks.

3. Define the sliding filament model of muscle contraction and explain the cross-bridge cycle with a labeled diagram.
OR
Explain vascular, infectious, and degenerative disorders of the central nervous system.
4. Describe the functions of the kidneys and explain the structure of the human kidney with a labeled diagram.
OR
Define a nerve impulse and explain the mechanism of action potential in the neuron membrane.
5. Explain the structure of skeletal muscles and the ultrastructure of skeletal muscle fibers with a labeled diagram.

-----XXXXXXXX-----

BOARD OF INTERMEDIATE EDUCATION, KARACHI
INTERMEDIATE EXAMINATION
MODEL PAPER-2025 (ACCORDING TO REDUCED SYLLABUS – 2025)

Max. Marks: 09

BIOLOGY PAPER – II
ZOOLOGY (THEORY)
 (Science Pre-Medical Group)

Time: 20 minutes

According to New Book

SECTION 'A'
(MULTIPLE CHOICE QUESTIONS) – (M.C.Qs.)

Marks : 09

NOTE: i) This section consists of 18 part questions and all are to be answered. Each part question carries ½ mark.
 ii) Do not copy the part questions in your answerbook. Write only the answer in full against the proper number of the question and its part.

1. Choose the correct answer for each from the given options:

- i) Renal Cortex produces an important hormone necessary for the synthesis of RBC's:
 * Erythropoietin * Leukopoietin * Thrombopoietin * Renin
- ii) Cartilage is a soft flexible form of connective tissue surrounded by a layer called:
 * Myocardium * Periosteum * Osteoderm * Perichondrium
- iii) Most of the neurons in human brain are:
 * Sensory Neurons * Motor Neurons * Interneurons * Auditory Neurons
- iv) This hormone exerts antagonistic action to parathyroid hormone:
 * Thyroxin * Calcitonin * Growth Hormone * Epinephrine
- v) In males, FSH promotes the development and maturation of:
 * Testosterone * Sperm Cells * Egg Cells * Polar Cells
- vi) A self-regulating process by which biological systems maintain stability that adjusting to the changing conditions is called:
 * Homeostasis * Osmoregulation * Excretion * Biological Rhythms
- vii) The ring-like shape of the girdle is due to the joining of the coral bone with the sacrum and a joint in the pubic part called:
 * Public Symphysis * Iliac Junction
 * Pelvic Symphysis * Syndesmosis
- viii) The surface on a neuron that discharges vesicles is the:
 * Dendrite * Axon Hillock
 * Presynaptic Membrane * Postsynaptic Membrane
- ix) If the adrenal cortex were removed which group of hormones would be most affected:
 * Steroid * Peptide * Tropic * Amino Acid Derived
- x) In vitro fertilization (IVF) is a method used to:
 * Treat Infertility * Enhance Hormones
 * Prevent STDs * Enhance Enzymes
- xi) The inflammation in kidneys due to irritation of kidney stones is called:
 * Lithonephritis * Edema * Sarcoma * Encephalitis
- xii) An antagonist muscle is relaxed while the other side opposite to antagonist muscle:
 * Contracted * Relaxed * No Change * Extremely Relaxed
- xiii) An inhibitory postsynaptic potential occurs in a membrane made more permeable to:
 * Potassium ions * Sodium ions * Calcium ions * ATP
- xiv) This hormone is not synthesized from the amino acid tyrosine:
 * Epinephrine * Catecholamine * Thyroxin * Cholesterol
- xv) If the body temperature rises above the suitable limit due to a hot environment or strenuous activity, this condition is called:
 * Exothermia * Hyperthermia * Hypothermia * Endothermia
- xvi) This is related to the mild to severe grade of stretching or tearing of a ligament that holds the bones of a joint together:
 * Spasm * Tetany * Sprains * Cramps
- xvii) The major inhibitory neurotransmitter of a brain is:
 * Acetylcholine * Epinephrine * GABA * Endorphin
- xviii) This stimulates the contraction of uterine muscle:
 * Oxytocin * Thyroxin * Growth Hormone * Insulin

-----XXXXXXXX-----

BOARD OF INTERMEDIATE EDUCATION, KARACHI
INTERMEDIATE EXAMINATION
MODEL PAPER-2025 (ACCORDING TO REDUCED SYLLABUS – 2025)

COMPUTER SCIENCE PAPER – I
(Science General & Humanities Groups – Regular)

Max. Marks: 60
Time: 2 hours 40 minutes

SECTION ‘B’
(SHORT-ANSWER QUESTIONS)

Marks: 30

Note: Answer any **Ten** part questions from this section. All part questions carry equal marks. Answer should not exceed 6 to 7 lines.

2. i) Why system software is necessary for any computer system?
- ii) What do a compiler and interpreter do?
- iii) Name any three full duplex devices.
- iv) Why a RAM should be a temporary storage?
- v) Distinguish between Serial Port and Parallel Port.
- vi) Define Network protocols name any three.
- vii) What is the main difference between Router and Gateway?
- viii) What do you mean by Broadcasting?
- ix) How can you define Metropolitan Area Network?
- x) Define Io T. Name any three devices.
- xi) What is main logical difference between AND gate and OR gate?
- xii) Draw the diagram of following equation:

$$(A + B) \cdot (\bar{A} + \bar{B}) = C$$

- xiii) Differentiate between Analogue Computer and Digital Computer.
- xiv) Name any three magnetic storage medium.
- xv) Convert any three of the following number system:

* $(1011)_2$ ----- $(?)_{10}$	* $(263)_8$ ----- $(?)_{10}$
* $(144)_{10}$ ----- $(?)_2$	* $(640)_{10}$ ----- $(?)_8$
* $(AB3)_{16}$ ----- $(?)_{10}$	* $(784)_{10}$ ----- $(?)_{16}$

SECTION ‘C’
(DETAILED-ANSWER QUESTIONS)

Marks: 30

Note: Answer any **Three** questions from this section. All questions carry equal marks.

3. Describe different types of computer according to its size and speed.
4. Define Topology. Explain its types with diagram.
5. What are main differences between Impact Printers and Non-Impact Printers? Define different types of Impact printers.
6. Explain different types of communication media used in data communication.
7. What is an Operating System? Explain its function.

-----XXXXXXXXXX-----

BOARD OF INTERMEDIATE EDUCATION, KARACHI
INTERMEDIATE EXAMINATION
MODEL PAPER-2025 (ACCORDING TO REDUCED SYLLABUS – 2025)

COMPUTER SCIENCE PAPER – I
(Science General & Humanities Groups – Regular)

Max. Marks: 15
Time: 20 minutes

SECTION ‘A’
(MULTIPLE CHOICE QUESTIONS) – (M.C.Qs.)

Marks : 15

NOTE:

- i) This section consists of 15 part questions and all are to be answered. Each part question carries 1 mark.
ii) Do not copy the part questions in your answerbook. Write only the answer in full against the proper number of the question and its part.

1. Choose the correct answer for each from the given options:

- i) The first computer that used vacuum tubes was:
* Mark I * ENIAC * EDVAC * UNIVAC
- ii) The first microprocessor name was:
* Intel 8088 * Intel 4044 * Intel 8008 * Intel 4004
- iii) The generation of computer is classified:
* by the device used in memory and processor * by the speed of computer
* by the model of the computer * by the accuracy of computer
- iv) The Dot Matrix is a type of:
* Scanner * Memory * Monitor * Printer
- v) A type of memory that contain routine program that support to system hardware:
* BIOS * ROM * RAM * CACHE
- vi) A port which transmits 8 bits at a time is called:
* Parallel Port * Serial Port * Female Port * USB Port
- vii) An operation whereby a new word is placed into a particular memory location is called:
* a read operation * a write operation * a fetch operation * a trace operation
- viii) A connection between similar networks is:
* Server * Bridge * Router * Gateway
- ix) This is a Scanning device:
* Bar code Reader * Plotter * Keyboard * LED
- x) This is the fastest data communication medium:
* Co-axial * Twister pair cable * Microwave * Fiber optic cable
- xi) It is the logical gate that produces 1 output when all its inputs are set to 1:
* AND * NOT * XOR * OR
- xii) A physical or logical arrangement of computers that communicate with each other is called:
* Topology * Mode of Operation * WAN * Communication
- xiii) Distributive Law $X.(Y+Z)=:$
* $X+(Y.Z)$ * $(X + Y) + Z$ * $(X.Y) + (X.Z)$ * $(X + Y).(X + Z)$
- xiv) A computer program that translates one statement of program instructions at a time into machine language is called:
* Debugger * Interpreter * Compiler * Assembler
- xv) A computer cannot ‘boot’ if it does not have:
* Compiler * Loader * Operating System * Assembler

-----XXXXXXXX-----

BOARD OF INTERMEDIATE EDUCATION, KARACHI
INTERMEDIATE EXAMINATION
MODEL PAPER-2025 (ACCORDING TO REDUCED SYLLABUS – 2025)

COMPUTER SCIENCE PAPER – II
(Science General & Humanities Groups – Regular)

Max. Marks: 60
Time: 2 hours 40 minutes

NOTE: This paper comprises **Two** independent options – **(I) Programming Using 'C'** and **(II) Programming Using Visual Basic**. The candidates have to attempt any **One** Option, **Programming Using 'C'** OR **Programming Using Visual Basic**, whichever they have offered.

OPTION – I
PROGRAMMING USING 'C'

SECTION 'B'
(SHORT-ANSWER QUESTIONS)

Marks: 30

Note: Answer any **Ten** part questions from this section. All part questions carry equal marks. Answer should not exceed 6 to 7 lines.

2. i) What is a pointer in C? How it is initialized?
ii) What is C preprocessor directive. Define one of them.
iii) Define any four format specifiers with examples.
iv) Determine which of the following valid or invalid identifiers are. Give reason in case of invalid.
(a) getch (b) \$tax (c) f name (d) 5star (e) Main
v) Define sqrt(), pow(), abs() functions with examples.
vi) Convert the following expressions into C equivalent statements.
a) $x = a^2 + b^2 + c^2$ b) $x = (b^2 - C^3) 2bc$ c) $x = \frac{-b \pm \sqrt{b^2 - 4ac}}{2a}$ (do with any sign)
vii) Write a C program to find the largest value among three inputted numbers.
viii) Define 2D array with syntax.
ix) What is string? Define with an example.
x) What are reserved words? Name any three.
xi) Write the output of the following program segment.

```
int x = 0;
if (x == 0)
printf("hi");
else
printf("how are u");
printf("hello");
```


xii) Write and define the basic structure of a C program.
xiii) Define the scope of identifiers. (Local and Global identifiers)
xiv) Define else- if structure with syntax.
xv) Define break and continue statements with an example.
xvi) Write a 'C' program to generate the following using loops (do anyone)

a)	b)
*****	1
****	12
***	123
**	1234
*	12345

SECTION 'C'
(DETAILED-ANSWER QUESTIONS)

Marks: 30

Note: Answer any **Three** questions from this section. All questions carry equal marks.

3. Explain data types in C programming language with examples.
4. Describe switch statement with syntax and an example.
5. What is a function in C? Explain function prototype with an example.
6. What is a Loop? Explain its different types in C-programming language.
7. Explain basic operators in C programming with examples.

-----XXXXXXXXXX-----

BOARD OF INTERMEDIATE EDUCATION, KARACHI
INTERMEDIATE EXAMINATION
MODEL PAPER-2025 (ACCORDING TO REDUCED SYLLABUS – 2025)

COMPUTER SCIENCE PAPER – II
(Science General & Humanities Groups – Regular)

Max. Marks: 15
Time: 20 minutes

NOTE: This paper comprises **Two** independent options – **(I) Programming Using 'C'** and **(II) Programming Using Visual Basic**. The candidates have to attempt any **One** Option, **Programming Using 'C'** OR **Programming Using Visual Basic**, whichever they have offered.

OPTION – I
PROGRAMMING USING 'C'

SECTION 'A'
(MULTIPLE CHOICE QUESTIONS) – (M.C.Qs.)

Marks : 15

NOTE: i) This section consists of 15 part questions and all are to be answered. Each part question carries 1 mark.
ii) Do not copy the part questions in your answerbook. Write only the answer in full against the proper number of the question and its part.

- i) C language was developed by.
* Marconi * Goerge Bool * Blaise Pascal * Dennis Ritchie
- ii) All statements in C must be terminated with:
* , (comma) * ; (semicolon) * : (colon) * . (dot)
- iii) This statement is used to skip statements in middle of the loop:
* continue * break * return * goto
- iv) A string constant is a single character, enclosed in:
* double quotation mark * single quotation mark
* left and right braces * square brackets
- v) Comments or remarks can be placed anywhere within a program as long as they are placed within Delimiters
* by braces and asterisks { * comments * } * by asterisks * comments *
* by parenthesis and asterisks (* comments *) * by slashes and asterisks /* comments */
- vi) In C a pointer variable to an integer can be created by the declaration.
* int p* ; * int *p ; * int +p ; * int \$p ;
- vii) If x = 10, then printf(“%d”,x++); prints:
* 9 * 10 * 11 * 12
- viii) This is a logical operator:
* < * || * + * %
- ix) The initial value in array index is:
* 0 * 1 * 2 * -1
- x) The preprocessor directives begin with:
* & * // * # * <
- xi) The array int numbers[] = {2,4,5,6,7}, the number[0] is:
* 0 * 4 * 2 * 6
- xii) This function joins two strings:
* strcpy() * strcat() * strncon() * memcon()
- xiii) This loop executes at least once:
* for() * do-while() * while() * goto
- xiv) The C variable name can be start with:
* Number * Plus Sign (+) * Underscore * Asterisk (*)
- xv) The keyword used to exit from switch statement is:
* exit * break * else * case

-----XXXXXXXXXX-----

BOARD OF INTERMEDIATE EDUCATION, KARACHI
INTERMEDIATE EXAMINATION
MODEL PAPER-2025 (ACCORDING TO REDUCED SYLLABUS – 2025)

COMPUTER SCIENCE PAPER – II
(Science General & Humanities Groups – Regular)

Max. Marks: 60
Time: 2 hours 40 minutes

NOTE: This paper comprises **Two** independent options – (I) **Programming Using 'C'** and (II) **Programming Using Visual Basic**. The candidates have to attempt any **One** Option, **Programming Using 'C'** OR **Programming Using Visual Basic**, whichever they have offered.

OPTION – II
PROGRAMMING USING 'VISUAL BASIC'

SECTION 'B'
(SHORT-ANSWER QUESTIONS)

Marks: 30

Note: Answer any **Ten** part questions from this section. All part questions carry equal marks. Answer should not exceed 6 to 7 lines.

2.
 - i) Define the control which is used for selecting the exclusive alternatives.
 - ii) What is function?
 - iii) How can you handle exception in VB?
 - iv) What are the differences between ByVal and ByRef in VB?
 - v) Define hierarchical database model with diagram.
 - vi) Define select..case statement with syntax.
 - vii) What is Procedure? Write any three advantages.
 - viii) Define the scope of identifiers. (Local and Global identifiers)
 - ix) List any three differences between while and do loop.
 - x) Write a program that prints factorial of any number using function.
 - xi) Define one-to-many relationship with diagram.
 - xii) Write a program that takes the values of three numbers and print the largest number.
 - xiii) Define any three objects of a database.
 - xiv) Differentiate between Primary key and Foreign key.
 - xv) Who is a database administrator? Enlist any three of his responsibilities.

SECTION 'C'
(DETAILED-ANSWER QUESTIONS)

Marks: 30

Note: Answer any **Three** questions from this section. All questions carry equal marks.

3. Explain different multiple selection structures with syntax.
4. What is a Table in database? Explain different types of table relationships in database with examples.
5. Explain data types used in MS Access.
6. Explain Arrays and its types with examples.
7. Explain advanced Active-X controls with example.

-----XXXXXXXXXX-----

BOARD OF INTERMEDIATE EDUCATION, KARACHI
INTERMEDIATE EXAMINATION
MODEL PAPER-2025 (ACCORDING TO REDUCED SYLLABUS – 2025)

COMPUTER SCIENCE PAPER – II
(Science General & Humanities Groups – Regular)

Max. Marks: 15
Time: 20 minutes

NOTE: This paper comprises **Two** independent options – (I) **Programming Using 'C'** and (II) **Programming Using Visual Basic**. The candidates have to attempt any **One** Option, **Programming Using 'C'** OR **Programming Using Visual Basic**, whichever they have offered.

OPTION – II
PROGRAMMING USING 'VISUAL BASIC'

SECTION 'A'
(MULTIPLE CHOICE QUESTIONS) – (M.C.Qs.)

Marks : 15

NOTE: i) This section consists of 15 part questions and all are to be answered. Each part question carries 1 mark.
ii) Do not copy the part questions in your answerbook. Write only the answer in full against the proper number of the question and its part.

- i) Visual Basic Language is developed by:
* Symantec * Ashton-Tate * Microsoft * Sybase
- ii) The extension used to represent the project file in Visual Basic is:
A) .vbp * .vb * .cls * .vvb
- iii) This applications can be developed using Visual Basic tool:
* Graphical User Interface * Real-time
* Character User Interface * Command Line Interface
- iv) This is commonly used to perform an immediate action:
* Button Control * Close * End * Exit
- v) The default name of label control in Visual Basic is:
* Label1 * Default.Label * Label0 * NewLabel
- vi) This is a programming rule in Visual Basic:
* Grammar * Order * Syntax * Rules
- vii) In Visual Basic it is used for coding single-alternative and dual-alternative selection structures:
* If...Then...Else statement * Switch-Case block
* Recursion * Function Overloading
- viii) This is keyword necessary only in a dual-alternative selection structure:
* Alternative * Next * Dual * Else
- ix) The result of the expression $10-5>3*4-2$ is:
* Syntax error * No resulting value found
* False * True
- x) The requirement for repeating the instructions is referred to as:
* Looping Condition * Conditional Statement
* Selection Condition * Initialization Statement
- xi) It is the process of adding a number to the value stored in a value:
* Counting * Updating * Accumulating * Decrementing
- xii) An organized collection of related data accessible by possibly many concurrent users is:
* Source Code * Text File * Database * Binary File
- xiii) This key uniquely identifies a record:
* Primary key * Foreign key * Super key * Redundant key
- xiv) A link between tables is created by:
* Primary key * Foreign key * Redundant key * Super key
- xv) Null value is not allowed by:
* Primary key * Super key * Redundant key * Foreign key

-----XXXXXXXXXX-----

BOARD OF INTERMEDIATE EDUCATION, KARACHI

INTERMEDIATE EXAMINATION

MODEL PAPER-2025 (ACCORDING TO REDUCED SYLLABUS – 2025)

STATISTICS PAPER – II

Max. Marks: 40

(Commerce Group – Regular & Private)

Time: 1 hour 45 minutes

SECTION 'B' (SHORT-ANSWER QUESTIONS)

Marks : 20

Note: Answer any **Five** part questions from this section. All part questions carry equal marks. The use of scientific calculator is allowed.

2. i) What do you mean by statistics? Give at least two examples of daily life where statistics can be applied.

OR

Define discrete and continuous variables with examples.

- ii) Differentiate between one of the following:

* Primary data and Secondary data * Qualitative data and Quantitative data.

- iii) Represent the following data by a Pie diagram:

Items	Food	Rent	Clothing	Education	Transport
Expenditures	200	250	420	75	55

- iv) Following are the temperatures (x) in centigrade recorded in a certain city. 12, 20, 25, 30, 32, 35 find mean of y when $y = 3x - 15$.

- v) The sum of values is 1620 and the mean of values computed is 90. If a value 72 is included double in the data, find the correct mean.

- vi) From the data given below, calculate the index number of prices for 2022 with reference to 2021 as the base year, using Simple Aggregative Method:

Year	Price			
	A	B	C	D
2021	18	28	40	44
2022	24	40	26	30

- vii) A bag contains 6 red and 4 blue balls. Three balls are drawn at random from the bag. What is the probability that the two red and one blue balls are drawn?:

- viii) In how many different ways can the letters of words i) TOMORROW ii) PROBABILITY be arranged?

SECTION 'C' (DETAILED-ANSWER QUESTIONS)

Marks : 20

Note: Answer any **Two** questions from this section. All questions carry equal marks. The use of scientific calculator is allowed.

3. a) Find Median and Mode for the following frequency distribution.

Class Interval	8 – 12	13 – 17	18 – 22	23 – 27	28 – 32
Frequency	6	15	24	10	5

- b) Given that events A and B are mutually exclusive events such that $P(A) = 0.3$, $P(B) = 0.6$; Find $P(A \cup B)$.

4. a) Two dice are rolled once. What is the probability of getting a total of i) 9? ii) 6 or 8? Show the sample space and the events.

- b) Calculate Laspeyre's and Paasche's price index numbers for 1991 using 1990 as base year:

Commodity	1990		1991	
	Price	Quantity	Price	Quantity
A	10	4	12	3
B	6	5	9	2
C	5	3	8	1

5. a) The probability that a contractor will get a contract A is $\frac{2}{3}$ and the probability that he will get a contract B is $\frac{3}{5}$.

Find the probability that:

- i) He will get both the contracts.
ii) He will get contract A only.
iii) He will not get any contract.
b) The prices of milk for 7 years are recorded below:

Year	2018	2019	2020	2021	2022	2023	2024
Price	44	56	72	82	95	110	140

Calculate simple price index numbers for all the years taking (i) 2018 as base year (ii) 2018 and 2019 as base year.

-----XXXXXXXXXX-----

BOARD OF INTERMEDIATE EDUCATION, KARACHI

INTERMEDIATE EXAMINATION

MODEL PAPER-2025 (ACCORDING TO REDUCED SYLLABUS – 2025)

STATISTICS PAPER – II

Max. Marks: 10

(Commerce Group – Regular & Private)

Time: 15 minutes

SECTION ‘A’

(MULTIPLE CHOICE QUESTIONS) – (M.C.Qs.) **Marks : 10**

NOTE:

- i) This section consists of 10 part questions and all are to be answered. Each part question carries 1 mark.
ii) Do not copy the part questions in your answerbook. Write only the answer in full against the proper number of the question and its part. The use of scientific calculator is allowed.

1. Choose the correct answer for each from the given options:

- i) A numerical quantity calculated from the sample is called:
* Parameter * Statistic * Data * Matrix
- ii) When data is obtained by measurement, it is called:
* Qualitative * Continuous * Partial * Discrete
- iii) No. of wickets taken by a bowler in a match is an example of:
* Inferential variable * Discrete variable
* Qualitative variable * Picture variable
- iv) The graph of cumulative frequency is named as:
* Pie Chart * Histogram * Ogive * Frequency Polygon
- v) If for a data $\sum(x + 20) = 0$, then arithmetic mean will be:
* 20 * 30 * 0 * -20
- vi) The mean of the data 2, -2, 0, 4, 6, -4, -6 is:
* 2 * -2 * 0 * 4
- vii) If $\bar{y} = 8$ and $\sum y = 648$, then $n =$:
* 25 * 248 * 6784 * 81
- viii) The ratio of Fisher’s Index Number to the square root of Laspyere’s Index Number is:
* Paasche’s Index Number * Laspyere’s Index Number
* Fisher’s Index Number * Simple Index Number
- ix) The value of $0! \times 1!$ is:
* 0 * 1 * 2 * infinity
- x) If A and B are independent events then $P(A \cap B) =$:
* $P(A)P(B)$ * 0 * $P(B)$ * $P(A)$

-----XXXXXXXXXX-----

BOARD OF INTERMEDIATE EDUCATION, KARACHI

INTERMEDIATE EXAMINATION

MODEL PAPER-2025 (ACCORDING TO REDUCED SYLLABUS – 2025)

Max. Marks: 80

ECONOMICS PAPER – I

(Science General & Humanities Groups – Regular & Private)

Time: 2 hours 40 minutes

SECTION ‘B’

(SHORT-ANSWER QUESTIONS) Marks: 40

MICRO ECONOMICS (20 Marks)

2. Answer any **Four** of the following part questions. All part questions carry equal marks.

- i) Distinguish between Stock & Supply.
- ii) Explain Law of Diminishing Marginal Returns.
- iii) Define Price Elasticity of demand.
- iv) What are the advantages of large scale of production?
- v) Explain fixed cost and variable cost with examples.
- vi) Differentiate between Utility and Usefulness.

PAKISTAN ECONOMICS (20 Marks)

3. Answer any **Four** of the following part questions. All questions carry equal marks.

- i) Write the advantages of Forest.
- ii) Mention the sources of Agricultural credit.
- iii) What are the main energy resources of Pakistan.
- iv) Define the Mechanization of agriculture in Pakistan.
- v) Name the large_scale Industries of Pakistan.
- vi) Explain the causes of high growth rate of population in Pakistan.

SECTION ‘C’

(DETAILED-ANSWER QUESTIONS) Marks: 40

MICRO ECONOMICS (20 Marks)

Note: Answer any **One** of the following questions. All questions carry equal marks.

4. a) Explain the Law of Diminishing Marginal Utility with the help of Schedule & Diagram.
b) Write the assumptions of the Law of Diminishing Marginal Utility.
5. a) State the Total Expenditure Method for the measurement of Elasticity of demand.
b) Explain the factors which effect on the elasticity of demand.

PAKISTAN ECONOMICS (20 Marks)

Note: Answer any **One** of the following questions. All questions carry equal marks.

6. a) Discuss the basic Economic problems of Pakistan.
b) Suggest measure to solve these problems.
7. a) Explain the importance of industrial development in Pakistan.
b) Discuss the main problems of industrial labour.

-----XXXXXXXXXX-----

BOARD OF INTERMEDIATE EDUCATION, KARACHI

INTERMEDIATE EXAMINATION

MODEL PAPER-2025 (ACCORDING TO REDUCED SYLLABUS – 2025)

Max. Marks: 20

ECONOMICS PAPER – I

(Humanities Groups – Regular & Private)

Time: 20 minutes

SECTION ‘A’

(MULTIPLE CHOICE QUESTIONS – M.C.Qs.)

(Marks : 20)

NOTE:

- i) This section consists of 20 part questions and all are to be answered. Each part question carries one mark.
ii) Do not copy the part questions in your answerbook. Write only the answer in full against the proper number of the question and its part.

1. Choose the correct answer for each from the given options:

- i) Demand for luxury goods become:
* Elastic * Inelastic * Perfectly Inelastic* Highly elastic
- ii) Equilibrium price is determined with the help of:
* Demand * Demand & Supply
* Supply * Law of demand
- iii) The first atomic energy plant of Pakistan was established at:
* Islamabad * Peshawar * Karachi * Lahore
- iv) According to Prof. Marshall, economics is the science of:
* Scarcity & Choice * Wealth * Material Welfare * Capital
- v) In the long run all the factors of production are:
* Fixed * Variable * Constant * Infinite
- vi) Law of increasing cost is also called:
* Law of increasing returns * Law of diminishing cost
* Law of decreasing returns * Law of substitution
- vii) The largest deposits of coal are in this province of Pakistan:
* Punjab * Baluchistan * Sindh * KPK
- viii) The law of diminishing marginal returns applies especially to:
* Agriculture * Industry * Mining * Fishing
- ix) The cause of low standard of living in Pakistan is:
* Optimum Population * Over Population
* Under Population * Population Explosion
- x) The demand curve always slopes from:
* left to right upward * left to right
* left to right downward * right to left
- xi) The factor combines all the factors of production:
* Land * Capital * Labour * Organization
- xii) Microeconomics is also known as:
* Price Theory * Rent Theory * Interest Theory * Profit Theory
- xiii) This industry is the major source of foreign exchange earnings:
* Cotton & Textile * Cement Industry
* Sugar Industry * Automobile Industry
- xiv) The law of Equi-marginal utility is known as:
* Law of Demand * Law of Diminishing returns
* Law of Substitution * Law of Supply
- xv) This is not an economic good:
* Table * Air * Chair * Land
- xvi) In Pakistan, the first largest deposits of Natural gas were discovered at:
* Hyderabad * Sui * Thar * Chaghi
- xvii) Economic laws are:
* Moral * Conditional * Political * Definite
- xviii) The ability of a good to satisfy human wants is called:
* Utility * Usefulness * Need * Productivity
- xix) The source of agriculture credit in Pakistan is:
* ADBP * Commercial Bank
* Cooperative Society * State Bank
- xx) Steel Mill was established with the help of:
* France * United Kingdom * USSR * USA

-----XXXXXXXXXX-----

BOARD OF INTERMEDIATE EDUCATION, KARACHI
INTERMEDIATE EXAMINATION

MODEL PAPER-2025 (ACCORDING TO REDUCED SYLLABUS – 2025)

ACCOUNTING PAPER – I

Max Marks:80

(Commerce Group – Regular & Private)

Time : 2 hours 40 minutes

SECTION ‘B’

(SHORT-ANSWER QUESTIONS) (40 Marks)

NOTE: Answer any **Four** questions from this Section. All questions carry equal marks. The use of calculator is allowed.

2. ACCOUNTING EQUATION AND BASIC CONCEPTS:

- a) Answer the following independent cases:
- What will be the liabilities of a business entity having assets of Rs.200,000 and capital of Rs.150,000?
 - What will be the capital of a business having assets of Rs.80,000 and liabilities of Rs.40,000?
 - What will be the amount of assets of a business if its liabilities are Rs.25,000 and capital is Rs.45,000?
 - What will be the revenues of a business entity having expenses of Rs.60,000 and net profit of Rs.15,000?
 - What will be the expenses of a business if its revenues are Rs.80,000 and net loss is Rs.20,000
- b) For each of the following situations, write down a transaction that may have the required effect.
- Increase in assets and increase in owner’s equity.
 - Increase in assets and increase in liabilities.
 - Increase in one asset and decrease in another asset.
 - Increase in one asset, decrease in another asset, and increase in liability.
 - Increase in expense and increase in liability.

3. GENERAL JOURNAL:

The following transactions relate to Mr. Farhan Qazi, a sole trader during March 2024:

March 01: Started business with cash investment of Rs.50,000.

March 04: Opened a bank account with Rs.10,000.

March 07: Purchased goods on credit from Mr. Adnan for Rs.4,000.

March 10: Goods returned to Mr. Adnan for Rs.500.

March 16: Sold goods on account to Mr. Basit for Rs.6,000.

March 22: Received cash Rs.3,000 from Mr. Basit.

March 25: Withdrew cash from bank Rs.2,000 for personal use.

Required: Make journal entries in standard form giving narration below each entry.

4. GENERAL LEDGER:

Take the transactions contained in question no.3 of this paper and

Required: Setup necessary T-accounts in the general ledger and post the transactions there-in. Foot and Balance the accounts.

5. CASH BOOK:

a) On Jan.01, 2025, Ms.Huma Shahid, a finance consultant, had a cash balance of Rs.50,000. During the month of January 2025, they received a total amount of cash Rs.120,000 and made total payments during the same month Rs.100,000. What would be the amount of cash on Jan-31,2025?

b) M/S Naeem Khalid Traders uses three column cash book in the business. On Mar-01, 2024 they had cash in hand Rs.60,000 and cash at bank Rs.80,000. Following transactions were completed by them during March:

March 02: Sold merchandise for cash Rs.24,000.

March 08: Received a cheque from Mr. Abid for Rs.14,800 in full settlement of Rs.15,000. The cheque was deposited into the bank on the same day.

March 13: Paid cash to Mr. Mudassir Rs.12,600 in full settlement of Rs.13,000

March 14: The cheque of Mr. Abid was bounced.

March 26: Withdrew from bank Rs.12,000 to pay residential flat’s rent and Rs.9,000 for office rent.

Required: Prepare a three column cash book. Balance it on Mar-31 and bring down the balances as on April 01, 2024.

6. SPECIAL JOURNALS:

Following is an extract from the purchase journal and purchase return & allowance journal of Badar Alam Traders for the month of October-2024:

Badar Alam Traders Purchases Journal				Page No. 05
Date	Invoice Number	Number of Supplier	L.F	Amount
October 03	543	Tariq Soomro		Rs.11,500
October 04	544	Amjad Hussain		Rs.13,200
October 18	545	Abbas Ali Shah		Rs.11,800
October 25	546	Amjad Hussain		Rs.14,500

Badar Alam Traders Purchases Return & Allowance Journal				Page No. 02
Date	Debit Note No.	Number of Supplier	L.F	Amount
October 05	112	Amjad Hussain		Rs.500
October 20	113	Abbas Ali Shah		Rs.700
October 28	115	Amjad Hussain		Rs.900

Required: Set up “PURCHASES”, “PURCHASES RETURN & ALLOWANCE” and “ACCOUNTS PAYABLE” control account in the general ledger. Also prepare an account of “Amjad Hussain” in subsidiary ledger in running balance form.

Continued on the next page

7. BANK RECONCILIATION STATEMENT:

A comparison of the cash book and bank statement of Asma Anjum Super Store for the month of April-2024 revealed the following:

- i) Balance on April - 30, 2024, as per the cash book Rs.7,500 (Debit Balance).
- ii) Balance on April - 30, 2024, as per the bank statement Rs.7,500 (Debit Balance).
- iii) Cheques deposited on April 30, but yet not cleared by the bank Rs.15,000.
- iv) Cheques issued during the month of April but not presented for payment Rs.3,000.
- v) The bank has erroneously deducted the locker rent of Asima Anjum Stores from the account of Asma Anjum Stores Rs.5,000.
- vi) A cheque issued for the purchase of Furniture amounted to Rs.13,000 was erroneously recorded in the cash book as Rs.18,000.
- vii) A customer made direct deposit of Rs.6,000 into the bank but not recorded in the cash book.
- viii) On the owner’s instructions, insurance was paid by the bank but not recorded in the cash book Rs.1,600.
- ix) A customer’s cheque amounting to Rs.7,400 returned unpaid by the bank with the remarks of N.S.F.

Required: Prepare a bank reconciliation statement on April-30, 2024 for Asma Anjum Stores.

SECTION ‘C’

(DETAILED-ANSWER QUESTIONS) (40 Marks)

Answer any **Two** questions from this section. All questions carry equal marks

8. FINANCIAL STATEMENT:

SHEHZAD SALEEM MART adjusts, closes, and prepare financial statement on monthly basis. Following details pertain to the month of January 2025:

Shehzad Saleem Mart Trial Balance As on January 31, 2025			
Debit Balances		Credit Balances	
Cash	Rs.15,000	Accounts Payable	Rs.20,000
Accounts Receivable	Rs.40,000	Commission Income	Rs.7,000
Merchandise Inventory (01-01-2025)	Rs.18,000	Capital – Shehzad Saleem	Rs.80,000
Office Furniture	Rs.44,000	Sales	Rs.110,000
Prepaid Insurance	Rs.5,000	Purchases Return & Allowance	Rs.4,000
Office Supplies	Rs.5,000	Purchases Discount	Rs.4,000
Purchases	Rs.50,000		
Transportation – in	Rs.5,000		
Salaries Expenses	Rs.20,000		
Rent Expenses	Rs.15,000		
Sales Return and Allowance	Rs.8,000		
Total	Rs.225,000	Total	Rs.225,000

Data for adjustment on Jan.31, 2025:

- i) Unused office supplies Rs.2,000
- ii) Insurance expired Rs.1,500
- iii) Rent payable Rs.3,000
- iv) Salaries expense for the month Rs.23,000
- v) Estimated Bad debts Rs.1,200
- vi) Depreciation on Office Furniture was estimated at Rs.2,000
- vii) Merchandise inventory on Jan. 31, 2025 Rs.15,000

Required: i) Prepare Income statement for the period ended Jan. 31, 2025.
ii) Prepare Balance sheet as on Jan. 31, 2025.

9. a) Presented below are the components in Farooqui Company’s income statement. Determine the missing amount.

S.No.	Sales	Cost of Goods Sold	Gross Profit	Operating Expenses	Net Income
1	Rs.150,000	?	Rs.60,000	?	Rs.15,000
2	Rs.200,000	Rs.130,000	?	Rs.50,000	?
3	?	Rs.140,000	Rs.110,000	?	Rs.40,000

b) **ADJUSTMENTS:**

Take the data contained in question no. 8 of this paper and

Required: Prepare necessary Adjusting Entries.

10. CLOSING ENTRIES AND POST CLOSING TRIAL BALANCE:

Take the data contained in question no.8 of this paper and

Required: Prepare Closing Entries and Post-Closing Trial Balance on Jan. 31, 2025.

-----XXXXXXXXXX-----

BOARD OF INTERMEDIATE EDUCATION, KARACHI

INTERMEDIATE EXAMINATION

MODEL PAPER-2025 (ACCORDING TO REDUCED SYLLABUS – 2025)

ACCOUNTING PAPER – I

Max. Marks: 20

(Commerce Group – Regular & Private)

Time: 20 minutes

SECTION ‘A’

(MULTIPLE CHOICE QUESTIONS – M.C.Qs.)

Marks : 20

NOTE:

- i) This section consists of 20 part questions and all are to be answered. Each part question carries 1 mark.
- ii) Do not copy the part questions in your answerbook. Write only the answer in full against the proper number of the question and its part.
- iii) The use of calculator is allowed.

1. Choose the correct answer for each from the given options:

- i) A business activity that changes an amount in terms of assets, liabilities, or owner's equity is called a/an:
* Expense * Revenues * Transaction * Withdrawal
- ii) If assets of a business amounts to Rs.36,000 and its liabilities are 1/3 of its assets, then the amount of liabilities will be:
* Rs.12,000 * Rs.9,000 * Rs.6,000 * Rs.4,500
- iii) A resource that a business owns and uses in the process of revenue generation is called an/a:
* Asset * Expense * Liability * Owner's equity
- iv) Which of the following cannot be classified as a liability:
* Bank Overdraft * Accrued Expense * Unearned Income * Office Supplies
- v) Receipt of cash from credit customers will::
* Decrease an asset, decrease a liability * Decrease in assets, increase in expense
* Decrease an asset, increase a liability * Increase in one asset and decrease in another asset
- vi) An amount paid from the business for the electricity bill of the owner's residence will be treated as:
* Utilities Expense * Drawing * Capital * Electricity Expense
- vii) An asset possesses which of the following?:
* Future economic benefits for the business * All kinds of losses to the business
* Past economic events * Merits and Demerits for the business
- viii) An overdraft balance in the cash book is by nature a / an:
* Liability * Revenue * Asset * Expense
- ix) The following is a revenue:
* Unearned Commission * Commission Receivable
* Commission Payable * Commission Earned
- x) Income Statement of a business includes:
* Assets and Expenses * Liabilities and Income
* Income and Capital * Revenues and Expenses
- xi) This is called a 'snap shot' of the financial position of a business at a particular date:
* Balance Sheet * Income Statement * Cash Book * Sales Journal
- xii) Advance paid to supplier is classified as:
* Assets * Liabilities * Proprietorship * Revenues
- xiii) Gross profit includes:
* Salaries Expense * Commission Income
* Depreciation Expense * Sales Discount
- xiv) The discount allowed to customers as a trade policy, bargaining, or on bulk quantity is called:
* Cash discount * Purchases discount
* Trade discount * Sales discount
- xv) If net profit of a business is Rs.80,000 and its operating expenses amount to Rs.20,000 then the gross profit of that business would be Rs.:
* 100,000 * 60,000 * 40,000 * 120,000
- xvi) A business transaction affects:
* At least one account * Maximum of three accounts
* At least three accounts * At least two accounts
- xvii) The act of recording transactions in the Journal is called:
* Journalizing * Posting * Balancing * Footing
- xviii) A short explanation of transaction is written under each entry is called:
* Narration * Indentation * Explanation * Memorandum Entry
- xix) The following best describes a Trial Balance:
* It shows the financial position of the business * It is a special account
* It shows all the entries in the books * It is a list of the balances of the ledger accounts
- xx) The following statement is incorrect:
* Assets – Capital = Liabilities * Liabilities + Capital = Assets
* Liabilities + Assets = Capital * Assets – Liabilities = Capital

-----XXXXXXXXXX-----

BOARD OF INTERMEDIATE EDUCATION, KARACHI

INTERMEDIATE EXAMINATION

MODEL PAPER-2025 (ACCORDING TO REDUCED SYLLABUS – 2025)

ACCOUNTING PAPER – II

Max. Marks: 80

(Commerce Group – Regular & Private)

Time: 2 hours 40 minutes

SECTION 'B'

(SHORT-ANSWER QUESTIONS)

(Marks : 40)

NOTE: Answer any **Four** questions from this Section. All questions carry equal marks. The use of calculator is allowed.

2. PARTNERSHIP – DIVISION OF PROFIT AND LOSS:

Farhan and Shehzad are equal partners with capitals of Rs.120,000 and Rs.80,000 respectively. It is decided that partners will receive interest @ 15% per annum on their capitals and a monthly salary allowance of Rs.2,500 and Rs.2,000 respectively. Net Income for the year ended December 31, 2024, is Rs.75,000. Capitals are fixed.

Required: Prepare an Income Distribution Summary and journal entries for distribution of profit.

3. PARTNERSHIP – LIQUIDATION:

The partners who own the Big Boss Company have agreed to liquidate the partnership. A Balance Sheet as at March 31, 2024, is shown here. The partners share profits and losses equally. Farea is personally insolvent.

Balance Sheet			
Cash	Rs.20,000	Accounts Payable	Rs.160,000
Other Assets	?	Seema – Capital	Rs.120,000
		Maryam – Capital	Rs.80,000
		Farea – Capital	Rs.40,000
Total	Rs.400,000	Total	Rs.400,000

Required: Give necessary journal entries assuming that other assets are sold for Rs.200,000.

4. COMPANY – ISSUANCE OF SHARES AND DEBENTURES:

Asim Company Ltd. completed the following transactions:

- Offered to the public 40,000 shares of Rs.10 each. Applications were received for 30,000 shares. As per agreement the underwriters subscribed for the balance of their shares. The Co. finalized the allotment of shares.
- Purchased Land for Rs.180,000 and in consideration issued shares at market value of Rs.12/- each.
- In consideration of the services of the promoters, the company issued 8,000 shares of Rs.10/- each. Each share has a market value of Rs.12.50.
- Received Rs.190,000 against issuance of 2,000 12% debentures of Rs.100 each, redeemable after 5 years at Rs.110 each.

Required: Record the above transactions in the General Journal.

5. PARTNERSHIP – FORMATION:

On January 01, 2025 Fatima, Tasmia and Zainab agree to enter into a partnership under the title name FTZ Trading Company. Their capital contribution on the basis of capital ratio is 1 : 2 : 3.

Fatima: Invested cash Rs.260,000/-, merchandise Rs.100,000/- and office furniture Rs.40,000/-.

Tasmia: Invested merchandise inventory Rs.260,000/-, office equipment Rs.380,000 and sufficient cash to make his capital to the ratio of 1 : 2.

Zainab: Invested building Rs.1,000,000 and sufficient cash to make his capital to the ratio of 1 : 2 : 3.

Required: Give necessary journal entries of the firm to record the formation of the partnership.

6. COMPANY – DISPOSAL OF NET INCOME:

Given below are the balances taken from the books of Farooqui Company Ltd, as on December 31, 2024.

Authorized Capital:	200,000 ordinary shares of Rs.10 each	Rs.2,000,000/-
Paid up Capital:	100,000/- ordinary shares of Rs.10 each	Rs.1,000,000/-
Retained earnings (un-appropriated)		Rs.210,000/-

The income summary showed a credit balance of Rs.340,000/- for the year ended December 31, 2024. The management of the company decided as follows:

- To declare cash dividend @ 6% and stock dividend @ Rs.2 per share.
- To appropriate Rs.30,000/- for building extension.
- Dividend warrants issued for cash dividend.

Required: Prepare necessary entries in the General Journal to record the above transactions.

7. ACCOUNTING FOR PLANT ASSETS:

On January 01, 2025 Abbas Corporation purchased a machine at a list price of Rs.400,000. The terms were 2/10, n/30 and the payment was made on January 10th. Additional costs were incurred as follows:

Installation and Testing	Rs.12,000
Freight Charges	Rs.6,000
Fire Insurance for 3 years	Rs.7,200
Insurance-In-Transit	Rs.4,000

Required: Compute the Cost of Machine and Prepare necessary journal entries to record the cost of Machine.

Continued on next page

SECTION ‘C’
(DETAILED-ANSWER QUESTIONS) (Marks : 40)

NOTE: Answer any **Two** questions from this Section. All questions carry equal marks.

8. PARTNERSHIP – ADMISSION:

Huma and Asma are partners having capitals of Rs.60,000 and Rs.30,000 respectively, sharing profits and losses in their capital ratio. On March 01, 2025, they admit Saima as a new partner and give him a ¼ share:

Required: Prepare Journal entries to record Saima’s admission under each case separately:

- i) Saima invests Rs.40,000 and is credited with the entire amount of his investment.
- ii) Saima invests Rs.20,000. The total capital is to be increased by Saima’s investment.
- iii) Saima invests Furniture Rs.25,000 and sufficient cash

9. ACCOUNTING FOR PLANT ASSETS:

The balance of the following accounts have been taken from the ledger of Faraz & Co. as on December 31, 2022, before making any adjustment:

Machine Cost	Rs.500,000
Allowance for Depreciation	Rs.100,000

Required:

- i) Assuming that the company uses the Diminishing Balance Method at 20% for charging depreciation. Calculate depreciation for the year 2022, 2023 and 2024.
- ii) Prepare Allowance for Depreciation account up to December 31, 2023.
- iii) Prepare a partial balance sheet as on December 31, 2024.

10. ACCOUNTING FOR INCOMPLETE RECORDS:

Mr. Noman started business on May 01, 2024, with an investment of Rs.250,000 and maintains his accounting records on single entry basis. On December 31, 2024 the following information was obtained:

Cash	Rs.85,000
Accounts Receivable	Rs.90,000
Merchandise Inventory	Rs.120,000
Office Equipment	Rs.90,000
Accounts Payable	Rs.35,000

During the period he withdrew Rs.5,000 p.m. for personal use and made an additional investment of Rs.50,000. Depreciation on office equipment was estimated at 10% per annum and the allowance for bad debts was estimated at 5% of Accounts Receivable. Accrued salaries Rs.6,000 and Prepaid Insurance Rs.3,500.

Required:

- i) Compute Capital at End.
- ii) Prepare a Statement of Profit and Loss for the year ended December 31, 2024.
- iii) Prepare a Statement of Affairs as on December 31, 2024.

-----XXXXXXXXXX-----

BOARD OF INTERMEDIATE EDUCATION, KARACHI

INTERMEDIATE EXAMINATION

MODEL PAPER-2025 (ACCORDING TO REDUCED SYLLABUS – 2025)

ACCOUNTING PAPER – II

Max. Marks: 20

(Commerce Group – Regular & Private)

Time: 20 minutes

SECTION ‘A’

(MULTIPLE CHOICE QUESTIONS – M.C.Qs.)

Marks : 20

NOTE:

- i) This section consists of 20 part questions and all are to be answered. Each part question carries 1 mark.
ii) Do not copy the part questions in your answerbook. Write only the answer in full against the proper number of the question and its part.

1. Choose the correct answer for each from the given options:

- i) If a company offers shares at higher price than the par value, the difference is known as:
* Interest * Discount * Premium * Surplus
- ii) The share capital by which a company is registered is called:
* Issued Capital * Paid up Capital
* Authorized Capital * Subscribed capital
- iii) If the new partner purchases share from the old partner, then the total capital of the firm after admission of the new partner:
* Increases * decreases * remains constant * fluctuates
- iv) Salvage value is not taken into account while computing depreciation under:
* Straight Line Method * Production Method
* Hours Method * Diminishing Balance Method
- v) The statement of affairs is similar to:
* Trial balance * Balance sheet * Cash book * Income statement
- vi) Discount, availed during the concession period, is known as:
* Trade discount * Quantity discount
* Cash discount * Share discount
- vii) In case of an insolvent partner, his capital deficiency is borne by:
* Solvent Partners * The Government * The Bankers * The Creditors
- viii) At the time of liquidation, remaining cash is to be distributed among the partners:
* On the opening capital ratio * On the balance of capital at the end
* Equally * On the ending capital ratio
- ix) All fixed assets are depreciated except:
* Building * Machine * Land * Furniture
- x) Non-Current Liabilities include:
* Accounts Payable * Bonds Payable
* Rent Payable * Unearned Commission
- xi) Amount received in advance is:
* An income * An asset * A liability * An expense
- xii) The person who takes the initiative in the matter of formation of the company is called:
* Promoter * Shareholder * Director * Registrar
- xiii) The expenses incurred in the formation of the company, are called:
* General Expenses * Operating Expenses
* Selling Expenses * Preliminary Expenses
- xiv) Depreciable cost of an asset is equal to:
* Cost + Salvage Value * Cost + Accumulated Depreciation
* Cost – Salvage Value * Cost – Accumulated Depreciation
- xv) Straight Line Method is also known as:
* Reducing Balance Method * Working Hours Method
* Fixed Installment Method * Production Method
- xvi) This is not recorded in the books of account:
* Sales Discount * Purchases Discount
* Trade Discount * Cash Discount
- xvii) The profit earned by a company and paid to its shareholders in the form of cash is called:
* Cash Dividend * Stock Dividend * General Reserve * Retained Earnings
- xviii) In case of liquidation of firm, assets of the firm are:
* Purchased * Sold * Distributed * Donated
- xix) Depreciation is a process of:
* Valuation * Cost allocation
* Cash accumulation * Appraisal
- xx) Persons, who have entered into Partnership are collectively called:
* Agent * Partners * Firm * Promoters

-----XXXXXXXXXX-----

BOARD OF INTERMEDIATE EDUCATION, KARACHI
INTERMEDIATE EXAMINATION
MODEL PAPER-2025 (ACCORDING TO REDUCED SYLLABUS – 2025)

PRINCIPLES OF COMMERCE PAPER - I

Max. Marks: 60

(Commerce Group – Regular & Private)

Time: 2 hours 40 minutes

SECTION 'B'
(SHORT-ANSWER QUESTIONS)

(Marks : 30)

NOTE: Answer any **Six** part questions from this Section. All part questions carry equal marks.

2. i) Define Business and Industry.
- ii) Enlist the qualities of a good business man. (any ten)
- iii) Enlist the advantages of Sole proprietorship. Describe any one.
- iv) Define partnership and enlist the advantages of partnership.
- v) Write the services of wholesaler to retailer.
- vi) Enlist the functions of Marketing. Describe any one.
- vii) Define Advertising and Publicity.
- viii) Define Modarbab and Musharka.
- ix) Enlist the types of the business letter and explain any one.

SECTION 'C'
(DETAILED-ANSWER QUESTIONS)

(Marks : 30)

NOTE: Answer any **Two** questions from this Section. All questions carry equal marks.

3. What are the key requirement of formation and operating a new business?
4. Write the procedure of importing goods to England?

OR

How a public limited company is incorporated?

5. Describe the part of a Business letter and draw a sketch of business letter.

OR

Write an Inquiry Letter.

-----XXXXXXXXXX-----

BOARD OF INTERMEDIATE EDUCATION, KARACHI

INTERMEDIATE EXAMINATION

MODEL PAPER-2025 (ACCORDING TO REDUCED SYLLABUS – 2025)

PRINCIPLES OF COMMERCE PAPER - I

(Commerce Group – Regular & Private)

Time: 20 minutes

Max. Marks: 15

SECTION 'A'

(MULTIPLE CHOICE QUESTIONS – M.C.Qs.)

(Marks : 15)

NOTE:

- i) This section consists of 15 part questions and all are to be answered. Each part question carries 1 mark.
ii) Do not copy the part questions in your answerbook. Write only the answer in full against the proper number of the question and its part.

1. Choose the correct answer for each from the given options:

- i) The rules and regulations of a joint stock company are described in:
* Partnership deed * Prospectus
* Memorandum of association * Article of association
- ii) A joint stock company can start its business after receiving:
* Certificate of origin * Permission
* Certificate of commencement * Certificate of Incorporation
- iii) Paid occupation specially one that requires special education and training known as:
* Business * Profession * Trade * Industry
- iv) The facility of transportation is creates this utility:
* Place * Time * Price * Quantity
- v) The Bill of lading is issued by:
* Bank * Custom authority
* Shipping company * Port authority
- vi) A letter containing a common message is known as:
* Inquiry letter * Claim letter * Circular letter * Order letter
- vii) The bill of exchange demands the payment for:
* Consumer * Exporter * Bank * Importer
- viii) A joint stock company is owned by:
* Promoters * Shareholders * Bondholders * Government
- ix) The maximum amount of tax is paid in:
* Sole proprietorship * Partnership
* Cooperative society * Joint stock company
- x) Raw materials is produced for:
* Manufacturer * Retailor * Wholesaler * Consumer
- xi) The maximum number of partners in a banking business ownership is:
* 2 * 5 * 10 * 20
- xii) Utility Stores are the kind of:
* Retailing * Wholesaling * Manufacturing * Services
- xiii) Certificate of origin is necessary for:
* Local trade * Import trade * Export trade * Retail trade
- xiv) The inside address in a business letter is the address of:
* Receiver * Sender
* Mailing Company * Manager
- xv) This is not included in the characteristics of a good business letter:
* Conciseness * Correctness * Unclearness * Clarity

-----XXXXXXXXXX-----

BOARD OF INTERMEDIATE EDUCATION, KARACHI
INTERMEDIATE EXAMINATION
MODEL PAPER-2025 (ACCORDING TO REDUCED SYLLABUS – 2025)

PRINCIPLES OF COMMERCE PAPER - II
(BANKING)
(Commerce Group – Regular & Private)

Max. Marks: 60

Time: 2 hours 40 minutes

SECTION 'B'
(SHORT-ANSWER QUESTIONS) (Marks : 30)

NOTE: Answer any **Six** part questions from this Section. All part questions carry equal marks.

2. i) Enlist the kinds of Banks on the basis of functions.
- ii) Describe Current Account and Saving Account.
- iii) Define Endorsement. Describe Special Endorsement.
- iv) Define Letter of Credit. Describe any one kind of Letter of Credit.
- v) Write any four differences of Bill of Exchange and Promissory Note.
- vi) Define Balance of Trade and Balance of Payment.
- vii) Describe 'Clearing House'.
- viii) Define E – Banking. Write three advantages of E – Banking.
- ix) Write the causes of dishonouring of a Cheque.

SECTION 'C'
(DETAILED-ANSWER QUESTIONS) (Marks : 30)

NOTE: Answer any **Two** questions from this Section. All questions carry equal marks.

3. What are the services of a Commercial Bank?
4. Write the procedure of Credit Control.

OR

What are the factors affecting Rate of Exchange?

5. Write the principles of using Bank Funds?

OR

Define Cheque. Describe its parties and various kinds of cheque.

-----XXXXXXXXXX-----

BOARD OF INTERMEDIATE EDUCATION, KARACHI

INTERMEDIATE EXAMINATION

MODEL PAPER-2025 (ACCORDING TO REDUCED SYLLABUS – 2025)

PRINCIPLES OF COMMERCE PAPER - II

(BANKING)

(Commerce Group – Regular & Private)

Max. Marks: 15

Time: 20 minutes

SECTION 'A'

(MULTIPLE CHOICE QUESTIONS – M.C.Qs.)

(Marks : 15)

NOTE:

- i) This section consists of 15 part questions and all are to be answered. Each part question carries 1 mark.
- ii) Do not copy the part questions in your answer book. Write only the answer in full against the proper number of the question and its part.

1. Choose the correct answer for each from the given options:

- i) The rate at which one currency can be exchanged for another between nations is called:
* Interest Rate * Bank Rate * Exchange Rate * Markup Rate
- ii) The number of parties involved in a letter of credit is:
* 2 * 3 * 4 * 5
- iii) This is not included in a Non – Negotiable credit instrument:
* Postal Order * Money order * Letter of Credit * Bill of exchange
- iv) This party of bill of exchange is responsible to give acceptance of a bill:
* Drawer * Drawee * Payee * Endorser
- v) This credit control tool is not included in Qualitative control tool:
* Credit rationing * Moral Persuasion * Publicity * Change in Margin
- vi) This is the only bank of Pakistan established under statutory order:
* MCB Bank * Habib Bank Limited
* National Bank of Pakistan * Allied Bank Limited
- vii) The central bank policy which regulates the cost and availability of money and credit is:
* Monetary Policy * Fiscal policy * Credit control * Exchange control
- viii) Commercial bank keeps with it sufficient cash amount to meet their cash demand obligation is:
* Markup * Interest payment * Loan Payment * Cash reserve
- ix) Crossing of a Cheque can be cancelled by:
* Payee * Drawer * Drawee * Bank manager
- x) This is not an ancestor of banking evaluation:
* Goldsmith * Money lenders * Accountant * Merchants
- xi) This bank is not included in the classification by ownership:
* Commercial bank * Public bank * Private bank * Statutory bank
- xii) A bank performs all kinds of ordinary banking business is known as:
* Saving bank * Central bank
* Commercial bank * Industrial bank
- xiii) Credit control is a special function of:
* Industrial bank * Private bank * Central bank * Commercial bank
- xiv) The facility allowed by a bank to their customer's to draw excess cash then the deposit they have is:
* Interest * Commission * Markup * Overdraft
- xv) This bank is a symbol of financial sovereignty and economic stability of a country:
* Central bank * Commercial bank
* Government bank * Saving bank

-----XXXXXXXXXX-----

BOARD OF INTERMEDIATE EDUCATION, KARACHI

INTERMEDIATE EXAMINATION

MODEL PAPER-2025 (ACCORDING TO REDUCED SYLLABUS – 2025)

PRINCIPLES OF ECONOMICS PAPER–I

(Commerce Group – Regular & Private)

Max. Marks: 60

Time: 2 hours 40 minutes

SECTION ‘B’

(SHORT-ANSWER QUESTIONS) Marks : 30

MICRO ECONOMICS (15 Marks)

2. Answer any **THREE** of the following part questions. All part questions carry equal marks.

- i) State the Marshall’s and Robbins’s definition of Economics.
- ii) Distinguish between Micro Economics and Macro Economics.
- iii) State the law of supply.
- iv) Distinguish between Fixed Cost and Variable Cost.
- v) Explain the characteristics of Perfect Competition.

MACRO ECONOMICS (15 Marks)

3. Answer any **THREE** of the following part questions. All part questions carry equal marks.

- i) Explain the phases of Trade Cycle.
- ii) Distinguish between Domestic Trade and International Trade.
- iii) Distinguish between Private Finance and Public Finance.
- iv) Distinguish Between Direct Tax and Indirect Tax.
- v) State the Quantity Theory of money.

SECTION ‘C’

(DETAILED-ANSWER QUESTIONS) Marks : 30

MICRO ECONOMICS (15 Marks)

4. Answer any **ONE** of the following parts.

- i) Explain the Law of Demand with its assumptions.

OR

Explain the methods of the measurement of Elasticity of Demand

- ii) Explain the Law of Diminishing Marginal Utility with its assumptions and limitations.

MACRO ECONOMICS (15 Marks)

5. Answer any **ONE** of the following parts.

- i) Explain the various concepts of National Income with its measuring methods.
- ii) State the advantages and disadvantage of International Trade.

-----XXXXXXXXXX-----

BOARD OF INTERMEDIATE EDUCATION, KARACHI

INTERMEDIATE EXAMINATION

MODEL PAPER-2025 (ACCORDING TO REDUCED SYLLABUS – 2025)

PRINCIPLES OF ECONOMICS PAPER-I

Max. Marks: 15

(Commerce Group – Regular & Private)

Time: 20 minutes

SECTION 'A'

(MULTIPLE CHOICE QUESTIONS – M.C.Qs.)

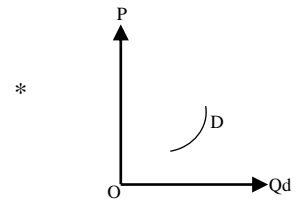
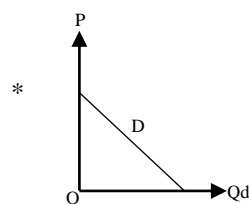
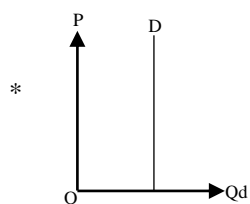
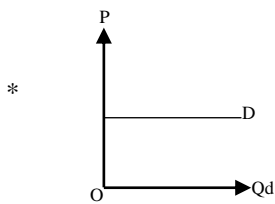
Marks : 15

NOTE:

- i) This section consists of 15 part questions and all are to be answered. Each part question carries 1 mark.
- ii) Do not copy the part questions in your answerbook. Write only the answer in full against the proper number of the question and its part.

1. Choose the correct answer for each from the given options:

- i) According to Prof. Robbins Economics is the Science of:
* Wealth * Material Welfare * Scarcity * Supply
- ii) The Elasticity of Demand for Luxuries is:
* Equal to one * Less than one * Equal to zero * More than one
- iii) The ability of a good to satisfy human wants is called:
* Productivity * Utility * Scarcity * Capital
- iv) When Economic activities are on their Peak, it is called:
* Boom * Depression * Recession * Recovery
- v) This is called an indirect tax:
* Property tax * Wealth tax * Sales tax * Income tax
- vi) Money acts as a:
* Medium of Exchange * Certainty * Elasticity * General Acceptance
- vii) Under perfect competition the curves of AR and MR are:
* Vertical * Horizontal * Upward * Downward
- viii) The Canons of Taxation were presented by:
* Keynes * J.S. Mill * Adam Smith * Robbins
- ix) This diagram shows a completely inelastic demand curve:



- x) Micro Economics is also known as:
* Game theory * Income theory * Price theory * Supply theory
- xi) Reward without any service is termed as:
* Rent * Wages * Transfer Payments * Interest
- xii) Equilibrium price is determined by:
* Demand * Supply * Utility * Demand and Supply
- xiii) The theory of comparative cost was presented by:
* Keynes * J.S. Mill * Adam Smith * David Ricardo
- xiv) Salary of permanent staff is a part of:
* Fixed Cost * Variable Cost * Marginal Cost * Average Cost
- xv) Adam Smith wrote the first book on Economics in the year A.D.:
* 1676 * 1776 * 1876 * 1976

-----XXXXXXXXXX-----

BOARD OF INTERMEDIATE EDUCATION, KARACHI
INTERMEDIATE EXAMINATION
MODEL PAPER-2025 (ACCORDING TO REDUCED SYLLABUS – 2025)
BUSINESS MATHEMATICS PAPER – I

Max. Marks: 40

(Commerce Group – Regular & Private)

Time: 1 hour 45 minutes

SECTION ‘B’
(SHORT-ANSWER QUESTIONS)

(Marks : 20)

NOTE: Answer any **Five** part questions from this Section. All part questions carry equal marks. Use of scientific calculator is allowed.

2. i) Find the slope and y – intercept of the line passing through $A(-8, 16)$ and $B(4, 6)$.

ii) Perform the indicated operation in the binary number system:

$$11101 \times 111$$

iii) The cost of 15 chairs is 15150. Find the cost of 22 chairs.

iv) An item is sold at a profit of Rs.2200, the rate of profit is 11%, what is the cost of the item.

v) Find the roots of the parabola $y = 2x^2 - 7x + 5$.

vi) A, B and C invest in a business, they earn a profit of Rs.1100. Distribute the profit in a ratio of 2 : 6 : 3.

vii) Find the inverse of matrix $A = \begin{bmatrix} 8 & 5 \\ 3 & 4 \end{bmatrix}$.

viii) Compute the compound interest in Rs.3000 for 3 years at the rate of 5% compounded annually.

SECTION ‘C’

(DETAILED-ANSWER QUESTIONS)

(Marks : 20)

NOTE: Answer any **Two** questions from this Section. All questions carry equal marks.

3. Use Cramer’s rule to solve the following:

$$6x - 4y = 17$$

$$2x - 3y = 4$$

4. Determine the quarterly car payment necessary to repay a Rs.1,500,000 loan if interest rate is 15% per annum compounded quarterly the period of loan is 5 year.

5. Find $(A \times B) + 2B^t$ where $A = \begin{bmatrix} 6 & 2 \\ 5 & 8 \end{bmatrix}$, $B = \begin{bmatrix} 1 & 3 \\ 2 & 6 \end{bmatrix}$

-----XXXXXXXXXX-----

BOARD OF INTERMEDIATE EDUCATION, KARACHI
INTERMEDIATE EXAMINATION
MODEL PAPER-2025 (ACCORDING TO REDUCED SYLLABUS – 2025)
BUSINESS MATHEMATICS PAPER – I
 (Commerce Group – Regular & Private)

Max. Marks: 10

Max. Marks: 10
 Time: 15 minutes

SECTION 'A'
(MULTIPLE CHOICE QUESTIONS – M.C.Qs.) **Marks : 10**

NOTE: i) This section consists of 10 part questions and all are to be answered. Each part question carries 1 mark.
 ii) Do not copy the part questions in your answerbook. Write only the answer in full against the proper number of the question and its part.

1. Choose the correct answer for each from the given options:

- i) Cube of 4 is:
- * 4 * 16 * 64 * 100
- ii) The ratio of 2 hours to 45 minutes is:
- * 8 : 3 * 5 : 3 * 4 : 3 * 4 : 1
- iii) Simple interest rate of Rs.400 for 3 years at 5% per annum is:
- * 60 * 80 * 100 * 101
- iv) A matrix for which inverse does not exist is a:
- * Null Matrix * Singular Matrix * Unit Matrix * Square Matrix
- v) The value of $\begin{vmatrix} 100 & 0 \\ 200 & 0 \end{vmatrix}$ is:
- * 0 * 1 * 2 * 10
- vi) $(A \times B)^t$ is equal to:
- * $B^t \times A^t$ * $A^t \times B^t$ * $A \times B$ * $B \times A$
- vii) y – intercept of the straight line $\frac{x}{3} + \frac{y}{5} = 1$ is:
- * 5 * 10 * 3 * 1
- viii) The parabola $y = x^2 + 3x + 1$ opens:
- * Upward * Downward * Leftward * Rightward
- ix) The value of x in $5 : x :: x : 5$ are:
- * ± 25 * ± 5 * ± 3 * ± 2
- x) The decimal equivalent of binary number 111 is:
- * 4 * 5 * 6 * 7

-----XXXXXXXXXXXXX-----

BOARD OF INTERMEDIATE EDUCATION, KARACHI

INTERMEDIATE EXAMINATION

MODEL PAPER-2025 (ACCORDING TO REDUCED SYLLABUS – 2025)

COMMERCIAL GEOGRAPHY PAPER – II

(Commerce Group – Regular & Private)

Time: 2 hours 40 minutes

Max. Marks: 60

SECTION 'B' **(SHORT-ANSWER QUESTIONS)**

Marks: 30

2. Answer any **Six** part questions. All part questions carry equal marks.

Marks : 18

- i) Define any three of the following:
* Tropical Region * Natural Resources * EIA
* Population Growth Rate * GIS
- ii) Describe the importance of commercial geography for an industrialist.
OR
Why is commerce developed between various regions or countries?
- iii) In developed countries employment ratio in primary sector has been decreased. Comment.
- iv) Write a short note on Online Business or E-commerce.
- v) Write a note on market gardening.
OR
Write advantages of mixed farming.
- vi) Write three causes for the depletion of natural resources.
- vii) Write any three uses of natural gas.
- viii) What is a byproduct? List the byproducts of wheat and rice.
- ix) Discuss the advantages of relative location for Commercial Activities.
- x) One textile manufacturing job supports three other jobs. Justify the statement.

3. Answer any **Four** part questions. All part questions carry equal marks.

Marks : 12

- i) Define any three of the following:
* Wakhan Corridor * Mountain Pass * Doab
* Linear Plantation * Canal
- ii) Write a note on the commercial importance of Northern Mountains.
- iii) Describe the Geographical importance of Pakistan.
OR
Show the hierarchy of administrative units of Pakistan.
- iv) List any six agricultural problems in Pakistan.
OR
List the measures for improving occupational structure of Pakistan.
- v) Differentiate between a Dry port and a Sea port.
- vi) Write a note on the salient features of Motorways.
- vii) What is the main purpose of a link canal? Write the names of any two link canals of Pakistan.
OR
Write any three benefits of a Dam.
- viii) Write a note on artificial forest or irrigated plantation.

SECTION 'C' **(DETAILED-ANSWER QUESTIONS)**

Marks: 30

4. Answer any **Two** part questions. All part questions carry equal marks.

Marks : 20

- i) Define commercial activities. With the help of a flow chart explain different kinds of commercial activities with examples.
- ii) List major agriculture types practiced in the world and explain any three of them.
OR
Describe Physical and Socio-Economic conditions required for the cultivation of Wheat / Sugarcane also discuss the world distribution of Wheat / Sugarcane.
- iii) With the help of three major revolutions discuss the history of world population growth.
- iv) List the factors which influence the industrial location and explain any four of them.

5. Answer any **One** part question. All part questions carry equal marks.

Marks : 10

- i) Name the physical regions of Pakistan and give the salient features of plain areas of Pakistan.
- ii) Describe the role of roads in the economy of Pakistan. Also write the names of major highways and motorways in Pakistan.

-----XXXXXXXXXX-----

BOARD OF INTERMEDIATE EDUCATION, KARACHI

INTERMEDIATE EXAMINATION

MODEL PAPER-2025 (ACCORDING TO REDUCED SYLLABUS – 2025)

COMMERCIAL GEOGRAPHY PAPER – II

(Commerce Group – Regular & Private)

Time: 20 minutes

Max. Marks: 15

SECTION ‘A’

(MULTIPLE CHOICE QUESTIONS) – M.C.Qs.)

Marks : 15

NOTE:

- i) This section consists of 15 part questions and all are to be answered. Each part question carries 1 mark.
- ii) Do not copy the part questions in your answerbook. Write only the answer in full against the proper number of the question and its part.

1. Choose the correct answer for each from the given options:

- i) An imaginary line around the earth forming the great circle that is equidistant from the north and the south poles is called:
* Pole * Tropic of Cancer
* Tropic of Capricorn * Equator
- ii) The Largest continent is Asia which is adjacent to Europe sometimes both these are referred as a single continent as:
* South East Asia * East Asia * Eurasia * Siberia
- iii) This is known as king of fiber:
* Wool * Jute * Cotton * Silk
- iv) E-commerce is the buying and selling of goods and services with the help of:
* Cell Phone * Markets * Super Stores * Internet
- v) This is a landlocked country:
* China * Afghanistan * USA * Pakistan
- vi) The aim of this occupation is to earn profit:
* Profession * Employment * Business * Teaching
- vii) This mountain range lies between Sindh and Balochistan:
* Himalaya * Kirthar * Safed Koh * Hindu Kush
- viii) The world’s second highest peak, located in the Karakoram Range is:
* Rakaposhi * Godwin Austen * Nanga Parbat * Mount Everest
- ix) Pakistan’s south-western coastal belt is connected with this country:
* India * China * Afghanistan * Iran
- x) It is not a grassland:
* Canterbury * Veldts * Downs * Greenland
- xi) River Indus forms its Delta near:
* Karachi * Thatta * Larkana * Gwadar
- xii) Karez irrigation in Pakistan is found in:
* Khyber Pakhtoon Khwa * Sindh
* Punjab * Balochistan
- xiii) It is a barrier across waterways to control the flow or raise the level of water:
* Dam * Barrage * Sprinkler * Canal
- xiv) Pakistan shares longest border with:
* India * China * Afghanistan * Iran
- xv) This region is called bread basket of the world:
* Steppes * Canterbury * Prarries * Veldts

-----XXXXXXXXXX-----